



Toll Free 1-877-564-8171

Leading Brand Motors and Accessories for:

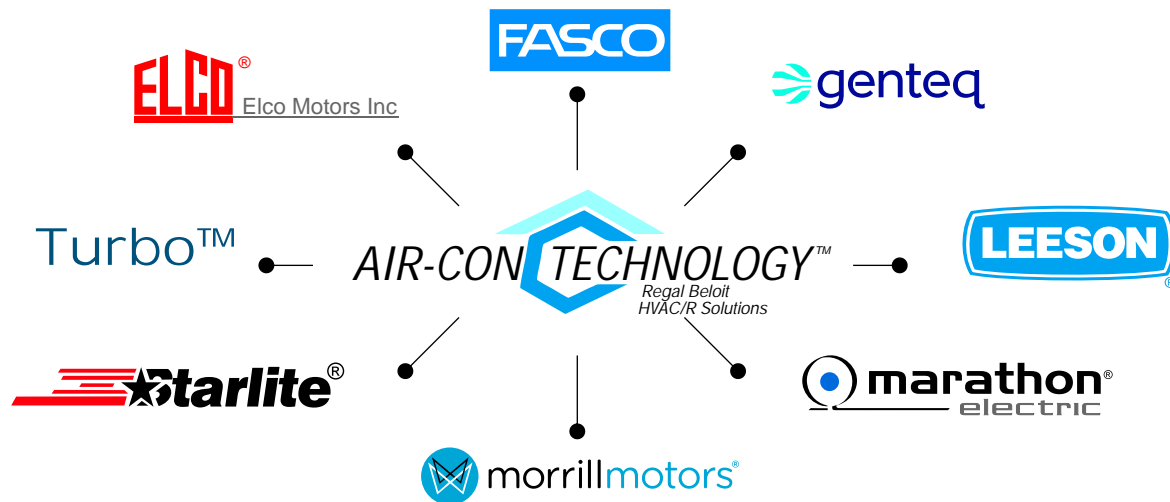
- Residential Heating and Cooling
- Commercial Rooftops
- Refrigeration Ventilation

HVAC/R Stock Catalogue
H101



HVAC/R QUESTIONS? WE'VE GOT ANSWERS!

AIR-CON SUPPLIERS AND PARTNERS



Whether you require a replacement motor for an air moving application or a leading edge ECM motor for a new OEM requirement Regal Beloit's Air-Con Technology HVAC/R Team has the solution for you.

The Air-Con HVAC/R Team is Regal Beloit Canada's group of experienced air moving specialists with sales application knowledge in HVAC/R electric motors and blowers primarily used in:

- residential heating/cooling
- commercial rooftops
- refrigeration/ventilation equipment

The Air-Con Team is also well versed in related products such as igniters, sheaves and capacitors.

Regal Beloit manufactures industry leading HVAC/R products including Elco, Fasco, Genteq, Morrill and Marathon.

Call Air-Con Technology Toll Free (877) 564-8171

Our address is: 320 Superior Boulevard, Mississauga, ON L5T 2N7

www.air-con.ca





TABLE OF CONTENTS	
DESCRIPTION	PAGE
3.3" Diameter Motors	4
Unit Bearing Motors	5
Elco Unit Bearing Motors	6
Direct Drive Motors	7 - 8
Double Shaft Motors	9
5.0" Double Shaft Motors	10
Fan Coil Motors	10
Belted Fan Motors	11 - 12
Condenser Fan Motors	13 - 16
Unit Heater Motors	17
ECM Motors	17
OEM	18 - 23
Contactors	24 - 26
Accessories	27
Igniters	28 - 29
Capacitors	30
Venters	31 - 43
Terms and Conditions	44 - 45
Motors to Stock	46 - 47
Order Notes	48

COLOUR CODE

YEAR ROUND
HEATING
COOLING
OEM
ECM
PARTS

SPECIAL "SS" STOCK MOTORS

SPECIAL "SS" STOCK MOTORS

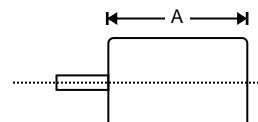
3.3" DIAMETER



PART NO.	H.P.	VOLTS	AMPS	RPM	ROT.	"A" DIM.	SHAFT DIA.	COMMENTS
D1184	1/16	460	0.3	3350	CCWSE	4.25"	0.3125	HALL EFFECT SW
* SS101	1/37	115	0.9	1550	CCWSE	2.1"	THD	LYALL PLUG
* SS103	1/37	115	0.9	1550	CWSE	2.1"	THD	LYALL PLUG
SS124	1/22	115	1.6	1550	CWSE	2.8"	THD	LYALL PLUG
SS125	1/20	230	0.8	1550	CWSE	2.8"	THD	LYALL PLUG
SS127	1/65	115	0.8	1600	CWSE	1.95"	THD	2- 3 BOLT
* SS137	1/75	115	0.6	1550	CCWSE	2.10"	THD	3 - PRONG
SS174	1/10	115	3.4	1450	CWSE	3.25"	3/8	4-5/16 "
* SS201	1/50	115	0.9	1430	CCWSE	1.9"	1/4	18" LEADS
* SS203	1/75	115	0.9	1600	CWSE	1.9"	1/4	PLUG
SS205	1/37	115	1.2	1575	CCWSE	2.75"	1/4	TRIANGLE BRKT.
* SS207	1/80	115	0.8	1600	CCWSE	1.9"	1/4	PLUG
* SS209	1/50	115	0.8	1500	CCWSE	1.5"	1/4	PLUG
* SS210	1/40	230	0.5	1550	CWSE	2.2"	1/4	24" LEADS
* SS212	1/30	240	0.6	1550	CWSE	2.8"	5/16	TRIANGLE BRKT.
# SS212B	1/30	240	0.6	1550	CWSE	2.8"	5/16	TRIANGLE BRKT.
* SS213	1/33	115	1.1	1550	CWSE	2.9"	5/16	CONDUIT BOX
* SS215	1/250	240	0.2	1200	CWSE	1.9"	5/16	CONDUIT BOX
* SS217	1/40	230	0.5	1550	CCWSE	2.7"	5/16	24" LEADS
* SS219	1/20	115	1.7	1550	CCWSE	2.7"	5/16	PLUG
* SS220	1/20	115	1.7	1550	CWSE	2.7"	5/16	PLUG
SS262	1/70	115	0.6	1400	CCWSE	2.0"	5/16	PLUG
SS300	1/20	115	1.9	1550	CWSE	1.9"	5/16	CONDUIT BOX
* SS302	1/100	230	0.3	1450	CCWSE	2.7"	5/16	24" LEADS
* SS303	1/30	115	1.5	1550	CCWSE	2.7"	5/16	PLUG
SS305	1/75	115	0.8	2700	CWSE	2.7"	5/16	PLUG
SS311	1/75	115	0.7	1550	CCWSE	1.9"	1/4	PLUG
* SS319	1/50	115	0.9	1430	CCWSE	2.0"	5/16	PLUG
SS355	1/15	115	2.3	1550	CCWSE	1.9"	1/4	PLUG
* SS358	1/15	115	2.0	1550	CCWSE	1.9"	1/4	D1124
* SS359	1/15	230	2.0	1550	DBL	3.1"	5/16	D1126
* SS370	1/20	115	0.82	1550	CCWSE	1.7"	1/4	D1243
* SS371	1/20	230	0.4	1550	CCWSE	2.2"	5/16	D1245
SS506	1/250	115	0.3	1550	CCWSE	1.7"	1/4	PLUG

Ball Bearing

* SUGGESTED STOCK



www.air-con.ca Toll free (877) 564-8171

UNIT BEARING MOTORS

FEATURES:

- SHADED POLE
- TOTALLY ENCLOSED
- 4 POLE
- 3.5" DIAMETER



	Watt	RPM	Volts	Amps	Stock Number	Rot.	Notes
*	1/15	1550	208-230	1.1	1232	CW	9665
*	1/20	1550	208-230	1.0	1332	CW	9664
*	1/20	1550	230	1.1	1336	CW	9336
*	1/35	1550	208-230	0.8	1432	CW	9654
*	4	1550	115	0.29	5211	CW	
*	6	1550	115	0.4	5311	CW	
*	9	1550	115	0.55	5411	CW	
*	9	1550	115	0.55	5412	CCW	
*	9	1550	230	0.27	5421	CW	
*	9	1550	115	0.6	5611	CW	
*	16	1550	115	1.1	5811	CW	D566
*	16	1150	230	0.6	5821	CW	D568
*	25	1550	115	1.2	2521	CCW	D571
*	25	1550	230	0.66	2512	CCW	D572
*	35	1550	115	1.5	3511	CCW	D574
*	35	1550	230	0.7	3512	CW	D576
*	50	1550	115	1.8	5011	CW	D578
*	50	1550	230	0.9	5012	CW	D580
*	50	1550	230	0.85	5122	CCW	276

* SUGGESTED STOCK

ELCO UNIT BEARING MOTORS



FEATURES:

- SHADED POLE
- TOTALLY ENCLOSED
- 4 POLE
- ALL ANGLE MOUNTING
- CONTINUOUS AIR OVER
- 21/23" LEAD LENGTH
- NUTS, SCREWS AND FAN BLADE ADAPTER INCLUDED
- 1 FOOT, FRONT SHROUD or TAPPED REAR 3 HOLE

	Watt	RPM	Volts	Amps	Stock	Rot.	Shaft	DIMENSIONS			
					Number		Dia.	A (INS.)	B (INS.)	D (INS.)	H (INS.)
	4	1550	115	0.36	EC4W115	CCWSE	THD	2.82	0.49	1.65	0.51
	4	1550	230	0.18	EC4W230	CCWSE	THD	2.82	0.49	1.65	0.51
	5	1550	115	0.04	EC5W115	CCWSE	THD	2.82	0.49	1.65	0.51
	5	1550	230	0.20	EC5W230	CCWSE	THD	2.82	0.49	1.65	0.51
*	6	1550	115	0.41	EC6W115	CCWSE	THD	3.05	0.49	1.89	0.79
	6	1550	230	0.20	EC6W230	CCWSE	THD	3.05	0.49	1.89	0.79
*	9	1550	115	0.58	EC9W115	CCWSE	THD	3.05	0.49	1.89	0.79
	9	1550	230	0.35	EC9W230	CCWSE	THD	3.05	0.49	1.89	0.79
	16	1550	115	1.0	EC16W115	CCWSE	THD	3.6	0.63	2.44	1.18
	16	1550	230	0.50	EC16W230	CCWSE	THD	3.6	0.63	2.44	1.18
	34	1550	115	1.6	EC34W115	CCWSE	THD	4.19	0.61	2.4	1.77
	34	1550	230	0.80	EC34W230	CCWSE	THD	4.19	0.61	2.4	1.77
#	34	1550	115	1.60	EC34W115V1543*	CCWSE	THD	4.19	0.61	2.4	1.77
#	34	1550	230	0.80	EC34W230V1542*	CCWSE	THD	4.19	0.61	2.4	1.77

* SUGGESTED STOCK

* Ref Plus

Lyall Plug

ELCO FAN BLADES

Motor	Diam (INS.)	Pitch	Blades	Stock Number	Application	Style
4 & 5W	6.06	28 deg	5	EC4VEA012	Suction	Plastic
	6.06	19 deg	5	EC4012309	Suction	Alum.
	6.77	28 deg	5	EC4012543	Blower	Alum.
6 & 9W	7.87	28 deg	5	EC4VEA009	Suction	Plastic
	7.87	34 deg	5	EC4VEA010	Suction	Plastic
9W	9.05	25 deg	5	EC4VEA013	Suction	Plastic
16W	9.05	31 deg	5	EC4VEA006	Suction	Plastic
	10.00	28 deg	5	EC4VEA007	Suction	Plastic



DIRECT DRIVE MOTORS

FEATURES:

- PSC
- THRU BOLT OR BELLY BAND MOUNTING
- 3 SPEED
- SLEEVE BEARING



	HP	RPM	Volts	Amps	Stock Number	Rot.	Shaft Dia.	Motor Dia	Notes
*	1/4	1075	115	4.8	3583	REV	1/2"	5.5"	
*	1/4	1075	208-230	2.2	3584	REV	1/2"	5.5"	
	1/4	1625	115	2.7	3992	REV	1/2"	5.5"	
	1/4	1625	208-230	1.2	3993	REV	1/2"	5.5"	
*	1/3	1075	115	5.9	3585	REV	1/2"	5.5"	
*	1/3	1075	208-230	2.9	3586	REV	1/2"	5.5"	
	1/3	1625	115	3.9	3994	REV	1/2"	5.5"	
	1/3	1625	208-230	1.9	3995	REV	1/2"	5.5"	
*	1/2	1075	115	7.7	3587	REV	1/2"	5.5"	
*	1/2	1075	208-230	4.2	3588	REV	1/2"	5.5"	
	1/2	1625	115	6.0	3996	REV	1/2"	5.5"	
	1/2	1625	208-230	2.8	3997	REV	1/2"	5.5"	
*	3/4	1075	115	10.5	3589	REV	1/2"	5.5"	
*	3/4	1075	208-230	5.4	3590	REV	1/2"	5.5"	
	3/4	1625	115	8.5	3998	REV	1/2"	5.5"	
	3/4	1625	208-230	4.0	3999	REV	1/2"	5.5"	
*	1	1075	115	11.8	3595	REV	1/2"	5.5"	
*	1	1075	208-230	5.6	3596	REV	1/2"	5.5"	

* SUGGESTED STOCK

LIFE LINE STANDARD MULTI HORSEPOWER

FEATURES:

- PSC
- THRU BOLT OR BELLY BAND MOUNTING
- 3 SPEED
- SLEEVE BEARING



	HP	RPM	Volts	Amps	Stock Number	Rot.	Shaft Dia.	Motor Dia	Notes
*	1/2 - 1/6	1075	115	6.2	3463	REV	1/2"	5.5"	FDL6001
*	1/2 - 1/6	1075	208-230	2.7	3464	REV	1/2"	5.5"	FD6000
	3/4 - 1/5	1075	115	8.5	3466	REV	1/2"	5.5"	FDL6002
	3/4 - 1/5	1075	208-230	4.2	3467	REV	1/2"	5.5"	FD6001

* SUGGESTED STOCK



DIRECT DRIVE MOTORS



FEATURES:

- PSC
- TORSION FLEX MOUNTING
- 3 or 4 SPEED (note 1)
- SLEEVE or BALL BEARING (note ^)



	HP	RPM	Volts	Amps	Stock Number	Rot.	Shaft Dia.	Motor Dia	Notes
*	1/4	1075	115	4.3	X034	REV	1/2"	5.5"	1
	1/4	1075	115	3.7	3783	REV	1/2"	5.5"	
	1/4	1075	208-230	1.7	3784	REV	1/2"	5.5"	
*	1/3	1075	115	6.5	X035	REV	1/2"	5.5"	1
	1/3	1075	115	4.9	3785	REV	1/2"	5.5"	
	1/3	1075	208-230	2.5	3786	REV	1/2"	5.5"	
*	1/2	1075	115	10.2	X036	REV	1/2"	5.5"	1
	1/2	1075	208-230	7.3	3787	REV	1/2"	5.5"	
	1/2	1075	208-230	3.5	3788	REV	1/2"	5.5"	
	3/4	1075	115	10.3	3789	REV	1/2"	5.5"	
	3/4	1075	208-230	4.8	3790	REV	1/2"	5.5"	

Notes: 1) Four Speed

* SUGGESTED STOCK

FEATURES:

- PSC
- THRU BOLT OR BELLY BAND MOUNTING
- 4 SPEED
- SLEEVE BEARING



	HP	RPM	Volts	Amps	Stock Number	Rot.	Shaft Dia.	Motor Dia	Notes
*	1/3-1/4-1/6-1/7	1075	115	4.3	F1314D	REV	1/2"	5.5"	

* SUGGESTED STOCK

Designed to fit most 1/3 hp and 1/4 hp applications
 42" Leads
 Run Capacitor included
 Fits Lennox OEM mounting bracket



www.air-con.ca Toll free (877) 564-8171

DOUBLE SHAFT MOTORS



FEATURES:

- PSC
- MULTIPLE MOUNTING CAPACITY
- 3 SPEED
- SLEEVE BEARING
- AUTO OVERLOAD
- MOUNTING HOLES IN SHELL FOR CAPACITOR BRACKET

HP	RPM	Volts	Amps	Stock Number	Rot. ^	Shaft Dia.	Motor Dia	Notes
1/8	1075	115	1.8	3641	CW	1/2"	5.5"	1
1/8	1075	208-230	0.8	3642	CW	1/2"	5.5"	1
1/6	1625	115	2.0	3851	CW	1/2"	5.5"	1
1/6	1625	208-230	0.9	3852	CW	1/2"	5.5"	1
1/6	1075	115	2.4	3651	CW	1/2"	5.5"	1
1/6	1075	208-230	1.0	3652	CW	1/2"	5.5"	1
1/4	1625	115	2.9	3871	CW	1/2"	5.5"	1
1/4	1625	208-230	1.2	3872	CW	1/2"	5.5"	1
1/4	1075	115	3.7	3671	CW	1/2"	5.5"	1
1/4	1075	208-230	1.7	3672	CW	1/2"	5.5"	1
1/3	1625	115	4.1	3881	CW	1/2"	5.5"	1
1/3	1625	208-230	1.9	3882	CW	1/2"	5.5"	1
1/3	1075	115	5.1	3681	CW	1/2"	5.5"	1
1/3	1075	208-230	2.5	3682	CW	1/2"	5.5"	1
1/2	1625	115	6.4	3891	CW	1/2"	5.5"	1
1/2	1625	208-230	3.0	3892	CW	1/2"	5.5"	1
1/2	1075	115	7.3	3691	CW	1/2"	5.5"	1
1/2	1075	208-230	3.5	3692	CW	1/2"	5.5"	1
3/4	1625	208-230	3.9	3898	CW	1/2"	5.5"	1
3/4	1075	208-230	5.4	X063	CW	1/2"	5.5"	1

^ Rotation determined fixed lead end. 1) Includes Length Adapter Kit

* SUGGESTED STOCK



5.0" DOUBLE SHAFT MOTORS



FEATURES:

- PSC OR SHADED POLE
- MULTIPLE MOUNTING CAPACITY
- 42 FRAME
- SLEEVE BEARING
- AUTO OVERLOAD



	HP	RPM	Volts	Amps	Stock Number	Spd	Shaft Dim.	Notes
*	1/15	1100	115	0.8	D1090	3	10 1/2 X 1/2 X 11 1/2	
*	1/10	1050	115	3.6	D289	5	10 3/4 x 1/2 x 10 3/4	
*	1/10	1050	115	3.6	D293	5	10 3/4 x 3/8 x 10 3/4	
*	1/20	1550	115	1.8	364	4	8 x 1/2 x 8	4 5/16
*	1/6	1550	115	2.0	955	3	10 3/8 x 1/2 x 10 3/8	
*	1/10	1075	115	1.8	2362SX	5	10 3/4 x 1/2 x 10 3/4	

* SUGGESTED STOCK

FEATURES:

- TORSION FLEX
- HOTELS, CONDOMINIUMS AND HIGH RISE APARTMENTS



FAN COIL MOTORS

	HP	RPM	Volts	Amps	Stock Number	Spd	Shaft Dia	Body Dia
*	1/6	950	115	2.6	FCM16	5	1/2 x 4 1/2	5.6
*	1/8	950	115	2.0	AIC799	5	1/2 x 4 1/2	5

* SUGGESTED STOCK



BELTED FAN MOTORS



FEATURES:

- SPLIT PHASE
- DRIPPROOF
- SLEEVE BEARING
- RESILIENT BASE
- AUTO OVERLOAD



	HP	RPM	Volts	Amps	Stock Number	Rot.	Shaft Dia.	Motor Dia	Notes
*	1/4	1725	115	5.1	HG701	REV	1/2"	5.5"	48Y
*	1/3	1725	115	6.6	HG711	REV	5/8"	5.5"	48Y
*	1/2	1725	115	7.9	HG703	REV	1/2"	5.5"	56Z ^
	1/4	1725/1140	115	5.2/2.8	HG704 ²	REV	1/2"	5.5"	56Z ^
*	1/3	1725/1140	115	6.0/3.8	HG706 ²	REV	1/2"	5.5"	56Z ^
*	1/2	1725/1140	115	7.8/4.8	HG715 ²	REV	1/2"	5.5"	56Z ^
	3/4	1725/1140	115	9.0/6.4	C474 ^{1,2}	REV	1/2"	5.5"	56Z ^
	1	1725/1140	115	10.8/7.4	C1478 ^{1,2}	REV	1/2"	5.5"	56Z ^

^ Ball Bearing 1. Cap Start 2. Two Speed

* SUGGESTED STOCK



FEATURES:

- SPLIT PHASE
- DRIPPROOF
- **BALL BEARING**
- RESILIENT BASE
- AUTO OVERLOAD
- SERVICE FACTOR



	HP	RPM	Volts	Amps	Stock Number	Rot.	Shaft Dia.	Motor Dia	Notes
*	1/4	1725	115	2.9	B303	REV	1/2"	5.5"	48YZ
*	1/3	1725	115	4.0	B305	REV	5/8"	5.5"	48YZ
*	1/2	1725	115	5.2	B307	REV	5/8"	5.5"	48YZ

* SUGGESTED STOCK



BELTED FAN MOTORS

FEATURES:

- CAPACITOR START
- DRIPPROOF
- BALL BEARING
- RESILIENT BASE
- AUTO OVERLOAD
- SERVICE FACTOR



	HP	RPM	Volts	^Amps	Stock Number	Rot.	Shaft Dia.	Motor Dia	Notes
*	1/4	1725	115/208-230	2.8	B313	REV	1/2"	5.5"	48YZ
*	1/3	1725	115/208-230	3.1	B315	REV	1/2"	5.5"	48YZ
*	1/2	1725	115/208-230	4.1	B317	REV	5/8"	6.5"	56
*	3/4	1725	115/208-230	5.2	B319	REV	5/8"	6.5"	56
*	1	1725	115/208-230	7.2	C1158	REV	5/8"	6.5"	56
	1.5	1725	115/208-230	8.4	C1160	REV	5/8"	6.5"	56H
	2	1725	115/208-230	10.9	C1162	REV	5/8"	6.5"	56H

^ 208V Amp Shown

* SUGGESTED STOCK

FEATURES:

- THREE PHASE
- DRIPPROOF
- BALL BEARING
- RESILIENT & RIGID BASE
- AUTO OVERLOAD



	HP	RPM	Volts	^Amps	Stock Number	Rot.	Shaft Dia.	Motor Frame	Notes
*	1/2	1725	208-230/460	2.3	G140	REV	5/8"	56	1
*	3/4	1725	208-230/460	2.9	G141	REV	5/8"	56	1
*	1	1725	208-230/460	3.4	G100	REV	5/8"	56H	1
	1	1725	208-230/460	3.5	K063	REV	7/8"	56HZ	2
*	1	1725	575	1.4	F11853	REV	5/8"	56H	1
*	1.5	1725	208-230/460	4.8	G143	REV	5/8"	56	1
	1.5	1725	208-230/460	4.8	K064	REV	7/8"	56HZ	2
	2	1725	208-230/460	6.2	G144	REV	5/8"	56H	1
*	2	1725	208-230/460	6.2	K065	REV	7/8"	56HZ	2
*	2	1725	575	2.5	F21853	REV	7/8"	56HZ	2
	2	3450	575	2.9	F235256	REV	5/8"	56H	1
	3	1725	208-230/460	8.6	G145	REV	7/8"	56HZ	1
*	3	1725	208-230/460	9.2	K066	REV	7/8"	56HZ	2
*	3	1725	575	3.3	F31853	REV	7/8"	56HZ	2
	3	3450	575	3.5	F335256	REV	7/8"	56HZ	1
	5	3450	575	4.9	F535256	REV	7/8"	56HZ	1

^208V Amp Shown 1) Resilient Base 2) Rigid Base

* SUGGESTED STOCK



CONDENSER FAN MOTORS



FEATURES:

- PSC
- ALL ANGLE MOUNT
- BALL BEARING
- REMOVABLE DRAIN PLUG



	HP	RPM	Volts	Amps	Stock Number	Rot.	Shaft Dia.	Motor Dia	Notes
*	1/6	1075	208-230	1.0	3727	REV	1/2"	5.5"	1
*	1/4	1075	208-230	1.3	3732	REV	1/2"	5.5"	FE1026SB
*	1/3	1075	208-230	1.8	3733	REV	1/2"	5.5"	FE1036SB
*	1/2	1075	208-230	2.8	3734	REV	1/2"	5.5"	FE1056SB
*	3/4	1075	208-230	3.8	3735	REV	1/2"	5.5"	FE1076S
*	SUGGESTED STOCK					Notes: 1) Sleeve Bearing			

LIFE LINE STANDARD MULTI HORSEPOWER

FEATURES:

- PSC
- ALL ANGLE MOUNT
- BALL BEARING
- REMOVABLE DRAIN PLUG
- SCREWS SUPPLIED for RHEEM MOUNTING
- 36" LEADS
- 48Y FRAME
- MULTI- HP APPLICATION, CONDENSER FAN



	HP	RPM	Volts	Amps	Stock Number	Rot.	Shaft Dia.	Motor Dia	Notes
*	1/2 - 1/6	1075	208-230	2.7	3458	REV	1/2"	5.5"	ORM5458B
*	1/2 - 1/6	850	208-230	1.9	3459	REV	1/2"	5.5"	ORM5488B
*	SUGGESTED STOCK								



CONDENSER FAN MOTORS



FEATURES:

- PSC
- TOTALLY ENCLOSED
- ALL ANGLE MOUNT
- BALL BEARING
- REMOVABLE DRAIN PLUG



	HP	RPM	Volts	Amps	Stock Number	Rot.	Shaft Dia.	Motor Dia	Notes
	1/6	825	208-230	1.0	3203	REV.	1/2"	5.5"	
*	1/4	825	208-230	1.5	3204	REV.	1/2"	5.5"	
	1/4	1075	460	0.9	3736	REV.	1/2"	5.5"	
	1/4	1625	208-230	2.0	X467	REV.	1/2"	5.5"	
*	1/3	825	208-230	2.2	3205	REV.	1/2"	5.5"	
*	1/3	825	460	1.1	3209	REV.	1/2"	5.5"	
*	1/3	1075	575	0.75	D2751	REV.	1/2"	5.5"	5FE1036S
	1/3	1075	460	1.3	3737	REV.	1/2"	5.5"	
	1/3	1625	208-230	2.5	X466	REV.	1/2"	5.5"	
*	1/2	825	208-230	3.1	3747HS	REV.	1/2"	5.5"	
*	1/2	1075	575	1.1	D2752	REV.	1/2"	5.5"	5FE1056S
*	1/2	1075	460	1.7	3738	REV.	1/2"	5.5"	
	1/2	1625	208-230	4.0	X468	REV.	1/2"	5.5"	
*	1/2	1625	575	1.0	D2750	REV.	1/2"	5.5"	5FE1054S
*	3/4	1075	575	1.8	D2753	REV.	1/2"	5.5"	5FE1076S
*	3/4	1075	460	2.0	3739	REV.	1/2"	5.5"	
	3/4	1625	208-230	4.2	X469	REV.	1/2"	5.5"	
	1	1075	460	3.4	X462	REV.	1/2"	5.5"	

* SUGGESTED STOCK



CONDENSER FAN MOTORS

FAN CANOPY - SINGLE PHASE



FEATURES:

- PSC
- OPEN AIR OVER
- SHAFT UP MOUNT ONLY
- BALL BEARING
- RAINSHIELD



HP	RPM	* Volts	^Amps	Stock Number	Rot.	Shaft Dia.	Motor Dia	Notes
0.4	1075	200-230/460	2.8	X445	REV	1/2"	5.5"	48Y
0.6	1075	200-230/460	3.6	X446	REV	1/2"	5.5"	48Y
0.8	1075	200-230/460	4.4	X447	REV	1/2"	5.5"	48Y
0.8	1075	200-230/460	4.0	P193	REV	1/2"	5.5"	48Y
0.8	1075	200-230/460	4.0	P194	REV	5/8"	5.5"	48Y
1	1075	200-230/460	5.2	X448	REV	5/8"	5.5"	56Y
1	1075	200-230/460	5.6	P195	REV	5/8"	5.5"	48Y
1	1075	575	2.6	P196	REV	1/2"	5.5"	56Y
1.5	1075	200-230/460	7.0	X449	REV	5/8"	5.5"	56Y
1.5	1075	200-230/460	7.8	P197	REV	5/8"	5.5"	56Y
1.5	1075	575	3.5	P198	REV	1/2"	5.5"	56Y

^ 230V Amps Shown

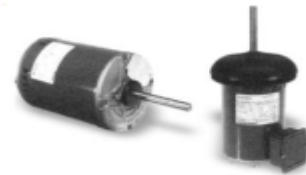
* SUGGESTED STOCK

FAN CANOPY - THREE PHASE



FEATURES:

- OPEN AIR OVER
- BELLY BAND MOUNT
- BALL BEARING
- RAINSHIELD



HP	RPM	* Volts	^Amps	Stock Number	Rot.	Shaft Dia.	Motor Dia	Notes
1/2	1140	200-230/460	2.8	K1403	REV	1/2"	5.5"	48Y
3/4	1140	200-230/460	1.8	K1404	REV	1/2"	5.5"	48Y
3/4	1140	575	4.4	K1405	REV	1/2"	5.5"	48Y
1	1140	200-230/460	4.0	K1402	REV	1/2"	5.5"	48Y
1.5	1140	200-230/460	4.0	K1407	REV	5/8"	5.5"	48Y

^ 230V Amps Shown

* SUGGESTED STOCK



CONDENSER FAN MOTORS



FEATURES:

- BALL BEARING
- OPEN AIR OVER
- BELLY BAND / RESILIENT RING MOUNTING
- THREE PHASE
- 56 FRAME
- VOLTAGE CHANGE DEVICE (VCD as noted)



	HP	RPM	Volts	^ Amps	Stock Number	Rot.	Shaft Dia.	Motor Dia	Notes
	1/2	1140	208-230/460	2.4	X500	REV.	5/8"	6.5"	VCD
*	1/2	1140	575	1.0	AICH977	REV.	5/8"	6.5"	
	3/4	1140	575	1.5	K1505	REV.	5/8"	6.5"	
*	1	1140	208-230/460	4.0	X502	REV.	5/8"	6.5"	VCD
*	1	1140	575	1.7	X522	REV.	5/8"	6.5"	
*	1	850	208-230/460	5.3	X507	REV.	5/8"	6.5"	VCD
*	1	850	575	2.1	X527	REV.	5/8"	6.5"	
	1.5	1140	208-230/460	5.5	X503	REV.	5/8"	6.5"	VCD
*	1.5	1140	575	2.2	X524	REV.	5/8"	6.5"	
	2	1140	208-230/460	7.2	X509	REV.	5/8"	6.5"	VCD
*	2	1140	575	2.7	X526	REV.	5/8"	6.5"	
*	2	1140	575	2.9	CAN2575	REV.	5/8"	6.5"	1

^ 208 V Amp Shown 1) Rigid Base

* SUGGESTED STOCK



www.air-con.ca Toll free (877) 564-8171

UNIT HEATER MOTORS

UNIT HEATER MOTORS

BALL BEARING

PSC

BX INCLUDED

THRU BOLT MOUNT



	HP	RPM	Volts	Amps	Number	Rot.	Shaft Dia.	Dia
*	1/6	1075	115	4.5	UHM16B	REV	1/2"	5.5
*	1/4	1075	115	6.8	UHM14B	REV	1/2"	5.5
*	1/3	1075	115	8.8	UHM13B	REV	1/2"	5.5
*	SUGGESTED STOCK							

ECM MOTORS



ECM MOTORS

	HP	RPM	Volts	Amps	Number	Rot.
	1/15	1550	115	1.3	5100	CW
	1/15	1550	115	1.3	5101	CCW
	1/15	1550	230	0.8	5200	CW
	1/15	1550	230	0.8	5201	CCW
	12W	1550	115	0.3	5R016	CW
*	1/2	1070	115-230	6.7	6005	REV
*	1	1070	115-230	11	6010	REV
*	SUGGESTED STOCK					

OEM



BLANCHARD

D1124, D1126

3204, 3733, 3734

X500, X507, X509, X526, X527

	HP	RPM	Volts	Amps	Stock Number	Rot.	Shaft Dia.	Motor Dia	Comments	Notes
*	1/60	3000	120	1.0	AIC605	CCWLE		SKEL	R605	
*	1/20	1550	120	2.0	D1124	CCWLE	5/16"	3.3"	E01007, 57, 58	1, 2
*	1/20	1550	208-230	1.2	D1126	CCWLE	5/16"	3.3"	E01059	1, 2
	1/15	1550	115	2	AIC1052	CW	5/16"	3.3"	E1052 R1052	2
	1/25	1550	230	1.0	AIC1053	CCWLE	5/16"	3.3"	E1053 R1053	2
*	1	1140	230/460	5.3	X507	REV	5/8"	6.5"	E05026, E05028	1
*	1	1140	575	2.1	X527	REV	5/8"	6.5"	E05027	1
	2	1140	230/460	7.2	X509	REV	5/8"	6.5"	E05033	1
*	2	1140	575	2.7	X526	REV	5/8"	6.5"	E05034	1

Notes: 1) Ball Bearing 2) Supplied with Lead and Plug assembly

* SUGGESTED STOCK



BOHN

D1124, D1126

3733, 3734

	HP	RPM	Volts	Amps	Stock Number	Rot.	Shaft Dia.	Motor Dia	Comments	Notes
*	1/60	3000	120	1.0	AIC605	CCWLE		SKEL	R605	
*	1/20	1550	120	2.0	D1124	CCWLE	5/16"	3.3"	5001L, 5004L	1, 2
*	1/20	1550	208-230	1.2	D1126	CCWLE	5/16"	3.3"	5008T, 5034M	1, 2
*	1/3	1075	208-230	1.8	3733	REV	1/2"	5.5"	5015H	1
*	1/2	1075	208-230	2.8	3734	REV	1/2"	5.5"	5002P, 5003P	1

Notes: 1) Ball Bearing 2) Supplied with Lead and Plug assembly

* SUGGESTED STOCK

OEM



CANCOIL

CAN2575

X526

	HP	RPM	Volts	Amps	Stock Number	Rot.	Shaft Dia.	Motor Dia	Comments	Notes
*	1/2	1140	575	0.9	AICH977	Rev.	5/8"	6.5"	MA1001	2, 3
*	2	1140	575	2.7	X526	Rev.	5/8"	6.5"	MA1003	
*	2	1140	575	2.9	CAN2575	Rev	7/8"	6.5"	MA1074	1

Notes: 1) Rigid Base 2) Totally Enclosed 3) Resilient Rings Included

* SUGGESTED STOCK



CARRIER

F21853, F31853

F1575DD

3288 / CCFM12575

CCFM1575

	HP	RPM	Volts	Amps	Stock Number	Rot.	Shaft Dia.	Motor Dia	Comments	Notes
*	1/2	1075	575	1.4	CCFM12575	REV	1/2"	5.5"	HC43VE575	1
*	1/2	1075	200-230/460	4.6	3288	REV	1/2"	5.5"	HC43VE200B	1
*	1	1075	575	2.1	CCFM1575	REV	5/8"	6.5"	HC51TE575	
*	2	1725	575	2.5	F21853	REV	7/8"	6.5"	HD52GA875	3
*	3	1725	575	3.3	F31853	REV	7/8"	6.5"	HD58DL575	3
*	1	1075	575	2.0	F1575DD	REV	1/2"	5.5"	50HJ900575	2

Notes: 1) Ear Lug Mount 2) 3 Speed 3) Rigid Base

* SUGGESTED STOCK

OEM



D574, D576



D580, D581



3005, 3047

COPELAND

	WATT	RPM	Volts	Amps	Stock Number	Rot.	Shaft Dia.	Motor Dia	Comments	Notes
*	35	1550	208-230	0.7	3512	CWLE	1/4 - 20	3.8"	050-0227-02	
*	35	1550	115	1.5	3511	CWLE	1/4 - 20	3.8"	050-0227-01	
*	50	1550	208-230	0.9	5012	CWLE	3/8"	3.8"	050-0017-01	
*	50	1550	208-230	0.9	5022	CCWLE	3/8"	3.8"	050-0011-00	

	HP	RPM	Volts	Amps	Stock Number	Rot.	Shaft Dia.	Motor Dia	Comments	Notes
*	1/4	1625	230	1.5	3047	CWLE	1/2"	5.5"	050-0107-01 050-0238-00	R3047
*	1/3	825	230	2.4	3005	CWLE	1/2"	5.5"	050-0234-00 050_0105_00	R3005

* SUGGESTED STOCK



D1122, D1123

HEATCRAFT

	HP	RPM	Volts	Amps	Stock Number	Rot.	Shaft Dia.	Motor Dia	Comments	Notes
*	1/16	1650	208-230	0.4	D1122	CCWLE	5/16"	3.3"	2530861	
*	1/15	1550	208-230	0.5	D1123	CWLE	5/16"	3.3"	25309101	

* SUGGESTED STOCK



3001

HILL

	HP	RPM	Volts	Amps	Stock Number	Rot.	Shaft Dia.	Motor Dia	Comments	Notes
*	1/3	1650	208-230	0.4	3001	CCWLE	1/2"	48	2530861	
	1	1550	208-230	0.5	3067	CWLE	1/2"	48	25309101	

* SUGGESTED STOCK

OEM



D807 / 30575



3012



X502, X522

HUSSMAN

	HP	RPM	Volts	Amps	Stock Number	Rot.	Shaft Dia.	Motor Dia	Comments	Notes
*	1	1140	575	1.7	X522	REV	5/8"	6.5"	170517	
*	1	1140	208-230/460	4.0	X502	REV	5/8"	6.5"	170518	
*	1/6	1625	208-230	1.2	D807	CWLE	1/2"	5.5"	GE3057	
*	1/6	1625	575	0.5	30575	REV	1/2"	5.5"	77238	
	1/5	1075	208-230	1.3	3012	CWLE	1/2"	5.5"	204201	

* SUGGESTED STOCK



KPR12553



D1243, D1245



F171065



F34575DD

KEEPRITE

	HP	RPM	Volts	Amps	Stock Number	Rot.	Shaft Dia.	Motor Dia	Comments	Notes
*	1/20	1550	115	0.8	D1243	CWLE	5/16"	3.3"	505124	1
*	1/20	1550	230	0.4	D1245	CWLE	5/16"	3.3"	505125	1
*	1/4	1140	575	0.5	F171065	REV	5/8"	5.5"	171065	TEAO
*	3/4	1075	575	2.4	F34575DD	REV	1/2"	5.5"	HQ1095096	2
*	1.25	1140	575	1.4	KPR12553	REV	5/8"	6.5"	173946	1
*	1/6	1075/850	208-230	1.5	AICF171672	FIXED	1/2"	5.5"	120240	3

Notes: 1) Lyall Plug 2) 3 Speed 3) 2 Speed

* SUGGESTED STOCK

OEM



LENNOX

F21853

43G52

X522

	HP	RPM	Volts	Amps	Stock Number	Rot.	Shaft Dia.	Motor Dia	Comments	Notes
*	1/5	1075	115	6.7	D158	REV	1/2"	5.0"	P8-9662	3 SPD
*	3/4	1075	115	9.0	3275	REV	1/2"	5.5"	45H3301 28F01	5 SPD
*	3/4	1075	460	2.3	43G52	CCWLE	1/2"	5.5"	43G52	
*	2	1725	575	2.5	F21853	REV	7/8"	6.5"	32657	
*	1	1125	575	2.0	F1575DD	REV	1/2"	5.5"	88C7601	
*	1	1140	575	1.7	X522	REV	5/8"	6.5"	98G6501	

* SUGGESTED STOCK



TECUMSEH

D574, D576

	HP	RPM	Volts	Amps	Stock Number	Rot.	Shaft Dia.	Motor Dia	Comments	Notes
*	35W	1500	115	1.5	3511	CWLE	1/4" - 20 THD	3.8"	TFM-351	
*	35W	1500	230	0.7	3512	CWLE	1/4" - 20 THD	3.8"	TFM-352	

* SUGGESTED STOCK

OEM



F31853



D2752, D2753



F1575DD / F34575DD

TRANE

	HP	RPM	Volts	Amps	Stock Number	Rot.	Shaft Dia.	Motor Dia.	Comments	Notes
*	1/2	1075	575	1.1	D2752	REV	1/2"	5.5"	70670705-01	
*	1/2	1625	575	1	D2750	REV	1/2"	5.5"		
*	3/4	1075	575	1.8	D2753	REV	1/2"	5.5"	MOT2607	
*	1	1125	575	2.0	F1575DD	REV	1/2"	5.5"	X70671181-017 X70671479-001	1
*	3/4	1075	575	2.4	F34575DD	REV	1/2"	5.5"	21A309661P01 X70671479-010	1
*	3	1725	575	3.3	F31853	REV	7/8"	6.5"	MOT6769 MOT9800	2

Notes: 1) 3 Speed 2) Rigid Base

* SUGGESTED STOCK



F21853 / F31853



YCFM124SD / OKY1056V1

YORK

	HP	RPM	Volts	Amps	Stock Number	Rot.	Shaft Dia.	Motor Dia.	Comments	Notes
*	1/2	1090	460	1.4	YCFM124SD	CWLE	1/2"	5.5"	024-24100-002 024-24110-714	2
*	1/2	1090	208-230	2.2 / 2.5	OKY1056V1	CWLE	1/2"	5.5"	024-24110-701 024-24110-713	2
*	3/4	1075	575	2.4	F34575DD	REV	1/2"	5.5"	024-31946-003	3
*	1	1100	460	3.3	YEFM1460	CCWLE	1/2"	5.5"	024-21671-D000 024-21673-000	2, 3
*	2	1725	575	2.5	F21853	REV	7/8"	6.5"	024-19623-007 024-19623-008	1
*	3	1725	575	3.3	F31853	REV	7/8"	6.5"	024-19623-009	1

Notes: 1) Rigid Base 2) Molex Plug 3) 3 Speed

* SUGGESTED STOCK

CONTACTORS



CSA Approved
Quick Connect Terminals
Snap On Auxillary Contacts

Single Pole Contactors (w/shunt)

Full Load Amps	Coil Volts 50/60 HZ	Stock Number	Resistive Amps	Locked Rotor Amps @ 240 V
30	24	H130A	40	150
30	120	H130B	40	150
30	208/240	H130C	40	150



Two Pole Contactors

Full Load Amps	Coil Volts 50/60 HZ	Stock Number	Resistive Amps	Locked Rotor Amps @ 240 V
30	24	H230A	40	150
30	120	H230B	40	150
30	208/240	H230C	40	150
40	24	H240A	50	240
40	120	H240B	50	240
40	208/240	H240C	50	240

CONTACTORS



CSA Approved
Quick Connect Terminals
Snap On Auxillary Contacts

Three Pole Contactors

Full Load Amps	Coil Volts 50/60 HZ	Stock Number	Resistive Amps	Locked Rotor Amps @ 240 V
30	24	H330A	40	180
30	120	H330B	40	180
30	208/240	H330C	40	180
40	24	H340A	50	240
40	120	H340B	50	240
40	208/240	H340C	50	240
50	24	H350A	65	300
50	120	H350B	65	300
50	208/240	H350C	65	300
60	24	H360A	75	360
60	120	H360B	75	360
60	208/240	H360C	75	360
75	24	H375A	90	450
75	120	H375B	90	450
75	208/240	H375C	90	450
90	24	H390A	120	540
90	120	H390C	120	540
90	208/240	H390C	120	540

CONTACTORS



CSA Approved
Quick Connect Terminals
Snap On Auxillary Contacts

Four Pole Contactors

Full Load Amps	Coil Volts 50/60 HZ	Stock Number	Resistive Amps	Locked Rotor Amps @ 240 V
30	120	H430B	40	180
30	240	H430C	40	180
40	24	H440A	50	240
40	120	H440B	50	240
40	240	H440C	50	240



CSA Approved
1/4" Quick Connect Terminals
Mounts Directly on Side of Contactor

Auxillary Contact Switches

Contactor FLA	Continuous Amps	Stock Number	Voltage Rating	Description
30, 40, 50, 60	10	H6S	300	SPDT
30, 40, 50, 60	10	H7S	600	DUAL SPDT
75, 90	10	H9S	600	SPDT

ACCESSORIES

TORSION FLEX MOUNTING BRACKET

FITS 42 & 48 FRAME MOTORS
INDIVIDUAL PACKAGING
COMES COMPLETE WITH
3 MOUNTING SCREWS



STOCK NO. TFM55

TURBO



TURBOMINI	TurboMINI 15 MFD Combined Total 370 / 440 VOLT
TURBO200	Turbo200 67.5 MFD Combined Total
TURBO200X	Turbo200X 97.5 MFD Combined Total
TURBOMETER	TurboMeter Dual Rated Capacitor Tester

Stock Number	DESCRIPTION
A111	48 Frame length adapet kit
1414A	Joggle bolt kit
1639A	10/32 7" through bolts
1640A	8/32 7" through bolts
1231A	1/4 x 5/16 shaft bushing
1306A	3/8 x 1/2 shaft bushing
1487A	1/2 x 5/8 shaft bushing
1320A	42" frame lug mount small
1366A	42" frame lug mount large
1223A	48" frame lug mount small
1364A	48 frame lug mount large
6619051	9" HD tri arm bracket
6619061	10" HD tri arm bracket

IGNITERS & FLAME SENSORS



FLAME SENSORS

PART #	DESCRIPTION
AICLH13	Carrier # LH680013
AICLH14	Carrier # LH680014
AICPSEHWI	White Rogers # 760-401
AICY700	York # 025-27773-700
AIC71075	GSW # 71075
AIC54301	Rheem # 62-23543-01



IGNITERS • SILICON NITRIDE

PART #	DESCRIPTION
AICHSIURK120	120 V Universal Round Nitride Igniter
AICSLURK24V	24V Mini Nitride Igniter
0230K00001	Goodman Igniter
AIC1090N	Universal HSI Nitride
AIC1121N	Goodman HSI Nitride
AIC1401N	General Replacement HSI Nitride
AIC1402N	General Replacement HSI Nitride
AIC1403N	General Replacement HSI Nitride
AIC1405N	General Replacement HSI Nitride
AIC1408N	Rheem HSI Nitride
AIC1409N	Carrier HSI Nitride
AIC1410N	Trane HSI Nitride
AIC1411N	Rheem HSI Nitride
AIC1412N	Goodman HSI Nitride
AIC1414N	Arco Air, Heil, ICP, Tempstar

IGNITERS



AIRCON PART	REPLACES	DESCRIPTION
1090	Universal Flat and Spiral	14" leads Includes 3 brackets wire sleeving, mounting screw, 2 wire nuts
O557	White Rodgers 767A-303,767A-353, 767A-357	9" leads with connector
O561	White Rodgers 767A-301,767A-306,767A-350, 767A-354, 767A-361	9" leads with connector
1033	Clare C238	36" leads with connector
1034	Rheem 62-22669-92	8.5" leads with connector, mounting bracket and gasket included
1040	Weil McLain 511-330-145	5.5" leads with connector
1050	Raypak 601559, 601600	5.5" leads with connector
1051	Raypak 601826	24" leads with connector
1056	DMO 20834, 26789	12" leads with connector
1061	Coleman 1474-051P, 052P	19" leads with sleeving and connector
1074	Detroit Radiant 101D	5.5" leads with connector
1099	Rheem AP12553	15" leads with connector
1106	GSW/John Woods 86483	20" leads with sleeving and connector
1108	GSW/John Woods 63994	25" leads with sleeving and connector, attached shield
1109	Lochinvar PLT3400	19" leads with connector, gasket included
1114	Nordyne/Partners Choice 632363, 903758	5.5" leads, connector included
1119	Lennox 33J37	36" leads with sleeving and connector
1121	Goodman B1401015, B1401018S, Modine 5H075032B	5.5" leads with connector, mounting bracket attached
1124	York 025-32625-000	5.5" leads with connector
1125	Nordyne/Partners Choice 902499	10" leads, connector included
1401		10" leads, connector included
1402		19" leads with wire nuts
1403	Raypak 600915, Synder General 1380654 , Trane B138196P01, IGN26, IGN30, Uni-Line 41-403, Weil McLain 511-330-193	5.5" leads with wire nuts
1404	Uni-Line 41-404, Weil McLain 511-330-190	5.5" leads with connector, bracket included
1405	Uni-Line 41-405, White Rodgers 767A-361, York 025-27766-000, 025-27774-000, 025-29043-000, 025-29050-000	5.5" leads with wire nuts
1406	Glowcore HSRK-7, Lochinvar PLT2400, Surfaceigniter FY009, Uni-Line 41-406, Weil McLain 511-330-188	11" leads with wire nuts, gasket included
1407	Trane B144676P02, IGN30, Uni-Line 41-407	5.5" leads with connector
1408	Rheem 62-22868-92, 62-22868-93 Trane B340039P01, Uni-Line 41-408	5.5" leads with connector
1409	Carrier LH33ZS001,002,003, 004 Ducane 20015201, Synder General 1380672,1380680 Trane IGN26, Uni-Line 41-409 Weil McLain 511-330-139	5.5" leads with connector
1410	Trane B144676P01, Uni-Line 41-410	5.5" leads with connector
1411	Rheem 62-22868-82, Uni-Line 41-411	5.5" leads with connector, bracket included
1412	Goodman B1401009, Intercity 1009604 Uni-Line 41-412	5.5" leads with connector, bracket included

CAPACITORS

SINGLE MFD RATING

370V OVAL DESIGN

440V OVAL DESIGN

Description	Stock Number	Description	Stock Number
2 MFD	OC2	2 MFD	OCF2
2.5 MFD	OC2.5	2.5 MFD	OCF2.5
3 MFD	OC3	3 MFD	OCF3
4 MFD	OC4	4 MFD	OCF4
5 MFD	OC5	5 MFD	OCF5
7.5 MFD	OC7.5	7.5 MFD	OCF7.5
10 MFD	OC10	10 MFD	OCF10
12.5 MFD	OC12.5	12.5 MFD	OCF12.5
17.5 MFD	OC17.5	17.5 MFD	OCF17.5
15 MFD	OC15	15 MFD	OCF15
20 MFD	OC20	20 MFD	OCF20
25 MFD	OC25	25 MFD	OCF25
30 MFD	OC30	30 MFD	OCF30
35 MFD	OC35	35 MFD	OCF35
40 MFD	OC40	40 MFD	OCF40
45 MFD	OC45	45 MFD	OCF45
50 MFD	OC50	50 MFD	OCF50
60 MFD	OC60	60 MFD	OCF60
70 MFD	OC70	70 MFD	OCF70
80 MFD	OC80	80 MFD	OCF80

DUAL MFD RATING

370V OVAL DESIGN

440V OVAL DESIGN

Description	Stock Number	Depth (Ins.)	Stock Number
15/5 MFD	OCD155	15/5 MFD	OCDF155
20/15 MFD	OCD2015	20/15 MFD	OCDF2015
20/5 MFD	OCD205	20/5 MFD	OCDF205
25/5 MFD	OCD255	25/5 MFD	OCDF255
30/5 MFD	OCD305	30/5 MFD	OCDF305
35/4 MFD	OCD354	35/4 MFD	OCDF354
35/5 MFD	OCD355	35/5 MFD	OCDF355
40/5 MFD	OCD405	40/5 MFD	OCDF405
45/5 MFD	OCD455	45/5 MFD	OCDF455
55/5 MFD	OCD555	55/5 MFD	OCDF555

CSA APPROVED

SINGLE MFD RATING

370V ROUND DESIGN

440V ROUND DESIGN

Description	Stock Number	Description	Stock Number
5 MFD	RC5	5 MFD	RCF5
7.5 MFD	RC7.5	7.5 MFD	RCF7.5
10 MFD	RC10	10 MFD	RCF10
15 MFD	RC15	15 MFD	RCF15
20 MFD	RC20	20 MFD	RCF20
25 MFD	RC25	25 MFD	RCF25
30 MFD	RC30	30 MFD	RCF30
35 MFD	RC35	35 MFD	RCF35
40 MFD	RC40	40 MFD	RCF40
45 MFD	RC45	45 MFD	RCF45
50 MFD	RC50	50 MFD	RCF50
60 MFD	RC60	60 MFD	RCF60
70 MFD	RC70	70 MFD	RCF70
80 MFD	RC80	80 MFD	RCF80

DUAL MFD RATING

370V ROUND DESIGN

440V ROUND DESIGN

Description	Stock Number	Description	Stock Number
15/3 MFD	RCD153	15/3 MFD	RCDF153
25/3 MFD	RCD253	25/3 MFD	RCDF253
25/4 MFD	RCD254	25/4 MFD	RCDF254
25/5 MFD	RCD255	25/5 MFD	RCDF255
30/5 MFD	RCD305	30/5 MFD	RCDF305
35/4 MFD	RCD354	35/4 MFD	RCDF354
35/5 MFD	RCD355	35/5 MFD	RCDF355
40/5 MFD	RCD405	40/5 MFD	RCDF405
40/7.5 MFD	RCD407.5	40/7.5 MFD	RCDF407.5
45/5 MFD	RCD455	45/5 MFD	RCDF455

CSA APPROVED

OEM REPLACEMENT MOTORS

AMANA 11009001 / 11009002 / 11009003 - 7021-9064, 7021-9259

Part No.		HP	Volts	Amps	RPM	Type	Rot.
A129	RFB129	1/20	115	1.95	3250	SP	CW



AMANA

Part No.		HP	Volts	Amps	RPM	Type	Rot.
A158	RFB158	1/25	115	0.5	3450	PSC	CW



AMANA 20044401 - D69964-5, 7002-2407

Part No.		HP	Volts	Amps	RPM	Type	Rot.
A160	RFB160	1/30	115	1.6	3000	SP	CW



AMANA 10585405

Part No.		HP	Volts	Amps	RPM	Type	Rot.
AIC111	RFB111	1/25	115	1.15	3000	SP	CW



ARMSTRONG 40425-002

Part No.		HP	Volts	Amps	RPM	Type	Rot.
A155	RFB425	1/25	115	1.4	3000	SP	CCW



CARRIER HC21ZE117

Part No.		HP	Volts	Amps	RPM	Type	Rot.
* AIC212	RFB212	1/30	115	1.6	3000	SP	CCW



CLARE 4246101

Part No.		HP	Volts	Amps	RPM	Type	Rot.
* A130	RFB130	1/20	115	0.7	3450	PSC	CW



CLARE 4246100

Part No.		HP	Volts	Amps	RPM	Type	Rot.
* A140	RFB140	1/50	115	1.4	3400	SP	CW



* SUGGESTED STOCK

ROTATION IS DETERMINED BY LOOKING AT SHAFT END

OEM REPLACEMENT MOTORS

CLARE V17 - V17-1A

Part No.		HP	Volts	Amps	RPM	Type	Rot.
* AICV17	RFB17	1/15	115	2	3000	SP	CCW



COLEMAN / DORNBACH 2940 391P

Part No.		HP	Volts	Amps	RPM	Type	Rot.
* A088	RFB391	1/25	115	1.3	3200	SP	CW



COLEMAN -EVCON 2702321

Part No.		HP	Volts	Amps	RPM	Type	Rot.
A156	RFB156	1/49	115	1.1	3000	SP	CW



DUNDAS FOUNDRY

Part No.		HP	Volts	Amps	RPM	Type	Rot.
50752-D500	RFB500	1/30	115	1.1	2860	SP	CCW



DUCANE 20054001,200101 7062-5019

Part No.		HP	Volts	Amps	RPM	Type	Rot.
A168	RFB540	1/10	115	0.7	3450	PSC	CCW



GASMAC AOS NO 13

Part No.		HP	Volts	Amps	RPM	Type	Rot.
* AIC13	RFB4	1/40	115	1	3000	SP	CCW



GOODMAN 0131M00002P - 119276-00

Part No.		HP	Volts	Amps	RPM	Type	Rot.
* A065	RFB276	1/50	115	1.22	3000	SP	CCW



GOODMAN B2833001

Part No.		HP	Volts	Amps	RPM	Type	Rot.
* A140	RFB140	1/50	115	1.4	3400	SP	CW



* SUGGESTED STOCK

ROTATION IS DETERMINED BY LOOKING AT SHAFT END

OEM REPLACEMENT MOTORS

GOODMAN B1859005

Part No.		HP	Volts	Amps	RPM	Type	Rot.
* A157	RFB185 RFB595	1/35	115	1.3	3000	SP	CCW



GOODMAN B2959000

Part No.		HP	Volts	Amps	RPM	Type	Rot.
A162	RFB162	1/50	208-230	0.5	3000	SP	CCW



GOODMAN B1859005- B4059000

Part No.		HP	Volts	Amps	RPM	Type	Rot.
A182	RFB590	1/35	115	1.2	3125	SP	CCW



GOODMAN 22307501, 119384-00

Part No.		HP	Volts	Amps	RPM	Type	Rot.
* AIC501	RFB501	1/20	115	2.8	3000	CCW	SP



GSW 63172

Part No.		HP	Volts	Amps	RPM	Type	Rot.
W8	RFB172	1/20	115	1.3	3200	SP	CCW



ICP 1013833 - 1010975 - 1010324 - RFB134

Part No.		HP	Volts	Amps	RPM	Type	Rot.
* A051	RFB833	1/60	115	1.6	3000	SP	CW



ICP 1014338

Part No.		HP	Volts	Amps	RPM	Type	Rot.
* A067	RFB330	1/20	115	2.6	3000	SP	CW



ICP 1010324 / 1708607P / 1010238P

Part No.		HP	Volts	Amps	RPM	Type	Rot.
* A134	RFB134	1/25	115	1.5	3060	SP	CW

* SUGGESTED STOCK

ROTATION IS DETERMINED BY LOOKING AT SHAFT END



OEM REPLACEMENT MOTORS

ICP 11094073 / 1094037P

Part No.		HP	Volts	Amps	RPM	Type	Rot.
A141	RFB141	1/60	115	1.0	2800	SP	CW



ICP/HEIL - QUAKER HQ1050144 - AOS-776

Part No.		HP	Volts	Amps	RPM	Type	Rot.
* A151	RFB105	1/90	230	0.3	2800	SP	CW



ICP 1010312 / 1010526 / 1010928 / 1011095 / 1011097/ 1011409

Part No.		HP	Volts	Amps	RPM	Type	Rot.
* A170		1/25	115	2.3	2800	SP	CW



ICP 1011412 - 1164280

Part No.		HP	Volts	Amps	RPM	Type	Rot.
* A171	RFB145	1/25	115	0.7	3450	SP	CCW



ICP 1011350

Part No.		HP	Volts	Amps	RPM	Type	Rot.
* A173	RFB350	1/25	115	0.8	3450	PSC	CW



ICP 1006168P

Part No.		HP	Volts	Amps	RPM	Type	Rot.
* A179	RFB68	1/50	115	0.9	3000	SP	CW



ICP 1097245 2 SPEED

Part No.		HP	Volts	Amps	RPM	Type	Rot.
A306	RFB107	1/30	208-230	0.3	3350	PSC	CCW



ICP 501493

Part No.		HP	Volts	Amps	RPM	Type	Rot.
* KVA1230	RFB9	1/20	115/230	1.0/.51	3000	SP	CCW



* SUGGESTED STOCK

ROTATION IS DETERMINED BY LOOKING AT SHAFT END

OEM REPLACEMENT MOTORS

ICP

Part No.		HP	Volts	Amps	RPM	Type	Rot.
B24220	RFB242	1/25	115	1.3	3200	SP	CCW



LENNOX 88K8401

Part No.		HP	Volts	Amps	RPM	Type	Rot.
* A068	RFB840	1/60	120	1.15	3000	SP	CCW



LENNOX 33J4101, 19J04, 7121-8812, 7021-8819

Part No.		HP	Volts	Amps	RPM	Type	Rot.
A135	RFB135	1/60	120	0.7	3000	SP	CCW



LENNOX 68K21 / 67K0401

Part No.		HP	Volts	Amps	RPM	Type	Rot.
* A163	RFB547	1/20	115	1.8	3400	SP	CCW



LENNOX 43K4101 - 7021-9593

Part No.		HP	Volts	Amps	RPM	Type	Rot.
* A164	RFB43/ RFB164	1/50	120	0.8	3000	SP	CCW



LENNOX 31L55

Part No.		HP	Volts	Amps	RPM	Type	Rot.
* A200		1/30	115	1.95	3000	SP	CCW



LENNOX 20J8901, 7021-5473

Part No.		HP	Volts	Amps	RPM	Type	Rot.
A206		1/25	115	1.5	3000	SP	CCW



* SUGGESTED STOCK

ROTATION IS DETERMINED BY LOOKING AT SHAFT END

OEM REPLACEMENT MOTORS

LENNOX 38M5001

Part No.		HP	Volts	Amps	RPM	Type	Rot.
A209	RFB385	1/20	115	0.8	3200/2800	PSC	CCW



LENNOX 81M1601

Part No.		HP	Volts	Amps	RPM	Type	Rot.
A211	RFB811	1/15	115	2.4	3400	SP	CCW



LENNOX 25M5501

Part No.		HP	Volts	Amps	RPM	Type	Rot.
A217	RFB550	1/16	230	0.83	3000	SP	CCW



LENNOX 88J3901

Part No.		HP	Volts	Amps	RPM	Type	Rot.
A219	RFB390	1/65	120	0.7	3000	SP	CCW



LENNOX 69M3301

Part No.		HP	Volts	Amps	RPM	Type	Rot.
A330		1/12	208-230	0.55	3200	PSC	CW



LENNOX 97J8101

Part No.		HP	Volts	Amps	RPM	Type	Rot.
A331	RFB320	1/10	460	0.38	3200	PSC	CW



LENNOX 28G6601

Part No.		HP	Volts	Amps	RPM	Type	Rot.
* A324	RFB101	1/12	208-230	0.5	3200	PSC	CW



LENNOX 98G8701

Part No.		HP	Volts	Amps	RPM	Type	Rot.
* A325	RFB701	1/10	208-230	0.6	3200	PSC	CW



* SUGGESTED STOCK

ROTATION IS DETERMINED BY LOOKING AT SHAFT END

OEM REPLACEMENT MOTORS

LENNOX 25J1201

Part No.		HP	Volts	Amps	RPM	Type	Rot.
D1198	RFB1198	1/30	115	1.5	3200	SP	CCW



NORDYNE 903111 7021-7973

Part No.		HP	Volts	Amps	RPM	Type	Rot.
* A132	RFB903	1/50	115	1.1	3000	SP	CW



NORDYNE 902977

Part No.		HP	Volts	Amps	RPM	Type	Rot.
* AIC902	RFB902	1/19	115	0.7	3450	PSC	CCW



OLSEN 26607

Part No.		HP	Volts	Amps	RPM	Type	Rot.
* AIC111	RFB111	1/25	115	1.2	3000	SP	CCW



OLSEN

Part No.		HP	Volts	Amps	RPM	Type	Rot.
* AIC112	RFB112	1/45	115	1.3	3000	SP	CCW



OLSEN

Part No.		HP	Volts	Amps	RPM	Type	Rot.
* AIC200	RFB200	1/20	115	1.2	3200	SP	CCW



OLSEN 18219M

Part No.		HP	Volts	Amps	RPM	Type	Rot.
* AIC18219M	RFB200	1/24	115	1.8	3200		



RHEEM/RUUD 70-24157-03, 117847-00

Part No.		HP	Volts	Amps	RPM	Type	Rot.
A066	RFB241	1/30	115	1.27	3000	SP	CW



RHEEM/RUUD 74-70-21496-03-01

Part No.		HP	Volts	Amps	RPM	Type	Rot.
A079	RFB214	1/45	115	1.1	3000	SP	CCW



* SUGGESTED STOCK

ROTATION IS DETERMINED BY LOOKING AT SHAFT END

OEM REPLACEMENT MOTORS

RHEEM / RUUD 70-21496-01

Part No.		HP	Volts	Amps	RPM	Type	Rot.
A090	RFB090	1/50	115	1.1	3000	SP	CW

RHEEM / RUUD 70-24033-01-13

Part No.		HP	Volts	Amps	RPM	Type	Rot.
* A136	RFB136	1/20	115	0.75	3450	PSC	CW

RHEEM / RUUD 70-22165-81, 7062-1881

Part No.		HP	Volts	Amps	RPM	Type	Rot.
A142	RFB142	1/20	115	0.7	3450	PSC	CW

RHEEM / RUUD 70-23641-81

Part No.		HP	Volts	Amps	RPM	Type	Rot.
A241	RFB641	1/25	208-230	0.6	3450	SP	CW

RHEEM / RUUD 09-189

Part No.		HP	Volts	Amps	RPM	Type	Rot.
AIC09-189	RFB189	1/40	115	1	3000	SP	CCW

SCHWANK 7021.10314 7021.8623 8211715046 J5.0579-AA

Part No.		HP	Volts	Amps	RPM	Type	Rot.
* SVA13		1/30	115	1.2	3000	SP	CCW

SKYMARK MTR-136PK

Part No.		HP	Volts	Amps	RPM	Type	Rot.
A251		1/35	208-230	1.1	3000	SP	CCW

STATE WATER HEATER 9003081005 - 7021-11086

Part No.		HP	Volts	Amps	RPM	Type	Rot.
W10		1/20	115	1.8	3400	SP	CCW

TAPPAN 8251560133, 82932

Part No.		HP	Volts	Amps	RPM	Type	Rot.
* A073	RFB73	1/40	115-230	0.82	3000	SP	CW

TRANE X38040252017, 82252

Part No.		HP	Volts	Amps	RPM	Type	Rot.
A069	RFB73	1/28	208-240	0.5	3450	SP	CCW

* SUGGESTED STOCK
ROTATION IS DETERMINED BY LOOKING AT SHAFT END



OEM REPLACEMENT MOTORS

TRANE D330757P04 / D342094P04 / X38040369010 ,
7062-3956, 7062-3616, 7062-5047, 7062-5575

Part No.		HP	Volts	Amps	RPM	Type	Rot.
A130	RFB130	1/20	115	0.7	3450	PSC	CW



TRANE D330809P01 / 210330673 , 7021-8428, 7021-8924, 7021-8013

Part No.		HP	Volts	Amps	RPM	Type	Rot.
A143	RFB143	1/50	115	0.95	3000	SP	CW



TRANE X38040363010 , B38040363010

Part No.		HP	Volts	Amps	RPM	Type	Rot.
A269		1/35	208-230	0.6	3000	SP	CCW



TRANE X38040369010 - 7062-5033

Part No.		HP	Volts	Amps	RPM	Type	Rot.
A270		1/15	208-230	0.5	2800	PSC	CCW



TRANE X38040308-01 - 7062-3969

Part No.		HP	Volts	Amps	RPM	Type	Rot.
A271		1/18	208-230	0.62	3500	PSC	CW



TRANE X38040309-01 - 7062-3971

Part No.		HP	Volts	Amps	RPM	Type	Rot.
A272		1/12	208-230	0.65	3500	PSC	CW



TRANE X390503120-01 - 7062-3972

Part No.		HP	Volts	Amps	RPM	Type	Rot.
A273		1/8	208-230	0.62	3500	PSC	CW



TRANE X38040311-01 - 7021-9011

Part No.		HP	Volts	Amps	RPM	Type	Rot.
A274		1/24	208-230	0.28	3500	PSC	CW



* SUGGESTED STOCK

ROTATION IS DETERMINED BY LOOKING AT SHAFT END



OEM REPLACEMENT MOTORS

TRANE D330787P01

Part No.		HP	Volts	Amps	RPM	Type	Rot.
A361	RFB787	1/42	115	1.6	3000	SP	CW



YORK 026-22239-700

Part No.		HP	Volts	Amps	RPM	Type	Rot.
* A063	RFB63	1/56	230	0.6	3000	SP	CCW



YORK 026-20224-700 ,026-20224- 000, 026-16323-000

Part No.		HP	Volts	Amps	RPM	Type	Rot.
* A083	RFB5	1/35	230	0.8	3000	SP	CCW



YORK 024-25007-000

Part No.		HP	Volts	Amps	RPM	Type	Rot.
* A137	RFB137	1/25	115	0.7	3450	PSC	CW



YORK 026 - 29599-700

Part No.		HP	Volts	Amps	RPM	Type	Rot.
A144	RFB144	1/40	208-230	0.5	3000	SP	CCW



YORK 024-27519-000

Part No.		HP	Volts	Amps	RPM	Type	Rot.
A154	RFB154	1/29	115	1.2	3000	SP	CW



YORK 024-25960-000 - 7062-3958

Part No.		HP	Volts	Amps	RPM	Type	Rot.
* A165	RFB165	1/25	115	0.7	3450	PSC	CW



YORK 026-27510-000

Part No.		HP	Volts	Amps	RPM	Type	Rot.
A220		1/20	115	1.6	3000	SP	CW

* SUGGESTED STOCK

ROTATION IS DETERMINED BY LOOKING AT SHAFT END



OEM REPLACEMENT MOTORS

YORK 026-30614-700

Part No.		HP	Volts	Amps	RPM	Type	Rot.
A221		1/40	208-230	0.6	3000	SP	CCW



YORK 024-34558-000, 7021-11577, 7021-17503, 7021-11830

Part No.		HP	Volts	Amps	RPM	Type	Rot.
* A225		1/15	115	2.25	3200	SP	CW



YORK 024-27641-000

Part No.		HP	Volts	Amps	RPM	Type	Rot.
* A227		1/25	115	0.7	3450	PSC	CW



YORK 024-31957-000

Part No.		HP	Volts	Amps	RPM	Type	Rot.
A228		1/25	115	2	3000	SP	CW



YORK 026-25100-000, 026-52512-C000

Part No.		HP	Volts	Amps	RPM	Type	Rot.
AIC251	RFB251	1/50	115	1.1	3000	SP	CW



YORK

Part No.		HP	Volts	Amps	RPM	Type	Rot.
* YVA2460	RFB654	1/16	230-460	1.2	3430	SP	CW



YORK

Part No.		HP	Volts	Amps	RPM	Type	Rot.
* YVA2460L	RFB655	1/16	230-460	1.2	3430	SP	CW



* SUGGESTED STOCK

ROTATION IS DETERMINED BY LOOKING AT SHAFT END

BLOWER CROSS REFERENCE

AIR-CON #	ROTOM #	AIR-CON #	ROTOM #	AIR-CON #	ROTOM #
50752-D500	RFB500	A168	RFB540	AIC902	RFB902
A051	RFB833	A170		AICV17	RFB17
A063	RFB63	A171	RFB145	B24220	RFB242
A065	RFB276	A173	RFB350	D1187	9526
A066	RFB241	A179	RFB68	D1198	RFM1198
A067	RFB330	A182	RFB590	D404/D405	RFM78
A068	RFB840	A184		D410/D412	RFM410
A069	RFB73	A200		D456	RFM5
A071	RFB73	A202		D456	RFM9
A073	RFB73	A203		KVA1230	RFB9
A075	N/A	A204		SVA13	
A079	RFB214	A205		W8	RFB172
A083	RFB5	A206		W10	
A088	RFB391	A207	RFB790	YVA2460	RFB231
A090	RFB090	A209	RFB385		RFB461
A100		A211	RFB811		RFB463
A1000		A217	RFB550		RFB654
A110		A219	RFB390	YVA2460L	RFB232
A111		A220			RFB462
A118		A221			RFB655
A120		A225		A081	RFB6
A1200		A227		Contact Air-Con	RFB52
A129	RFB129	A228		Contact Air-Con	RFB181
A130	RFB130	A229		AIC18219M	RFB200
AIC902	RFB902	A230		Contact Air-Con	RFB203
A132	RFB903	A241	RFB641	RFB282	RFB282
A134	RFB134	A246	RFB206	Contact Air-Con	RFB296
A135	RFB135	A251		Contact Air-Con	RFB380
A136	RFB136	A269		Contact Air-Con	RFB433
A137	RFB137	A270		Contact Air-Con	RFB467
A139	RFB139	A271		AIC501	RFB501
A140	RFB140	A272		Contact Air-Con	RFM2
A141	RFB141	A273		Contact Air-Con	RFM3
A142	RFB142	A274		Contact Air-Con	RFM4
A143	RFB143	AIC111	RFB111	Contact Air-Con	RFM10
A144	RFB144	A306	RFB107	Contact Air-Con	RFM11
A151	RFB105	A324	RFB101	Contact Air-Con	RFM12
A154	RFB154	A325	RFB701	Contact Air-Con	RFM187
A155	RFB425	A330		Contact Air-Con	RFM230
A156	RFB156	A331	RFB320	Contact Air-Con	RFM232
A157	RFB185	A361	RFB787	Contact Air-Con	RFM460
A158	RFB158	AIC09-189	RFB189	Contact Air-Con	RFM461
A160	RFB160	AIC112	RFB112	Contact Air-Con	RFM462
A162	RFB162	AIC13	RFB4	Contact Air-Con	RFM504
A163	RFB547	AIC200	RFB200	Contact Air-Con	RFM580
A164	RFB43	AIC212	RFB212	Contact Air-Con	RFM653
A164	RFB164	AIC251	RFB251	Contact Air-Con	RFM680
A165	RFB165	AIC501	RFB500	Contact Air-Con	RFM890

BLOWER CROSS REFERENCE

ROTOM #	AIR-CON #	ROTOM #	AIR-CON #	ROTOM #	AIR-CON #
N/A	A075	RFB320	A331	RFM230	N/A
RFB090	A090	RFB330	A067	RFM232	N/A
RFB101	A324	RFB350	A173	RFM3	N/A
RFB105	A151	RFB380	N/A	RFM4	N/A
RFB107	A306	RFB385	A209	RFM410	D410/D412
RFB111	AIC111	RFB390	A219	RFM460	N/A
RFB112	AIC112	RFB391	A088	RFM461	N/A
RFB129	A129	RFB4	AIC13	RFM462	N/A
RFB130	A130	RFB425	A155	RFM5	D456
RFB134	A134	RFB43	A164	RFM504	N/A
RFB135	A135	RFB433	N/A	RFM580	N/A
RFB136	A136	RFB461	YVA2460	RFM653	N/A
RFB137	A137	RFB462	YVA2460L	RFM680	N/A
RFB139	A139	RFB463	YVA2460	RFM78	N/A
RFB140	A140	RFB467	N/A	RFM890	N/A
RFB141	A141	RFB5	A083	RFM9	D456
RFB142	A142	RFB500	50752-D500	N/A	A100
RFB143	A143	RFB501	AIC501	N/A	A1000
RFB144	A144	RFB52	N/A	N/A	A110
RFB145	A171	RFB540	A168	N/A	A111
RFB154	A154	RFB547	A163	N/A	A118
RFB156	A156	RFB550	A217	N/A	A120
RFB158	A158	RFB590	A182	N/A	A1200
RFB160	A160	RFB6	A088	N/A	A170
RFB162	A162	RFB63	A063	N/A	A184
RFB164	A164	RFB641	A241	N/A	A200
RFB165	A165	RFB654	YVA2460	N/A	A202
RFB17	AICV17	RFB655	YVA2460L	N/A	A203
RFB172	W8	RFB68	A179	N/A	A204
RFB181	AIC181	RFB701	A325	N/A	A205
RFB185	A157	RFB73	A069	N/A	A206
RFB187	9526	RFB73	A071	N/A	A220
RFB189	AIC09-189	RFB73	A073	N/A	A221
RFB200	AIC18219M	RFB787	A361	N/A	A225
RFB200	AIC200	RFB790	A207	N/A	A227
RFB203	N/A	RFB811	A211	N/A	A228
RFB206	A246	RFB833	A051	N/A	A229
RFB212	AIC212	RFB840	A068	N/A	A230
RFB214	A079	RFB9	KVA1230	N/A	A251
RFB231	YVA2460	RFB902	AIC902	N/A	A269
RFB232	YVA2460L	RFB903	A132	N/A	A270
RFB241	A066	RFM10	N/A	N/A	A271
RFB242	B24220	RFM11	N/A	N/A	A272
RFB251	AIC251	RFM1198	D1198	N/A	A273
RFB276	A065	RFM12	N/A	N/A	A274
RFB282	N/A	RFM187	N/A	N/A	A330
RFB296	N/A	RFM2	N/A	N/A	SVA13



TERMS AND CONDITIONS

TERMS AND CONDITIONS OF SALES QUOTATIONS ARE MADE AND ORDERS ARE ACCEPTED BY SELLER ONLY TO THESE TERMS AND CONDITIONS.

1. AGREEMENT AND MODIFICATION OF SALES TERMS.

The agreement between Regal Beloit Canada and Buyer, as defined in the Purchase Order, is with respect to the sale of goods described herein (the "Goods") (the agreement is referred to hereafter as the "Sales Contract"). Any terms and conditions contained in any purchase order or other form of communication from Buyer, which are additional to or different from the terms and conditions set forth herein and in any attachments hereto (the "Terms and Conditions"), shall be deemed rejected by Seller unless expressly accepted in writing by Seller.

2. ACCEPTANCE OF ORDERS.

Acceptance by Seller of Buyer's purchase order(s) is expressly conditioned upon Buyer's assent to these Terms and Conditions.

3. QUOTATIONS.

Quotations by Seller shall be deemed to be offers by Seller to sell the Goods described therein subject to these Terms and Conditions, and acceptance of such offers is expressly limited to acceptance by Buyer of all of these Terms and Conditions within thirty (30) days from the date of the quotation or as specified. Purchase orders submitted by Buyer for the Goods quoted by Seller shall be subject to and will be deemed to constitute acceptance of these Terms and Conditions. All purchase orders will be subject to written approval by Seller.

4. TERMINATION OR MODIFICATION.

This Agreement and the attached Purchase Order may be modified or terminated only upon Seller's express written consent, which consent will at all times be conditioned on Buyer's agreement to pay Seller's modification or termination charge including, but not limited to expenses and costs plus a reasonable profit. Any and all Goods which have been completed and/or performed prior to the termination of this Agreement must be paid in full by the Buyer.

5. PRICES AND TERMS.

Fulfillment of Buyer's order is contingent upon the availability of materials. The price of the Goods sold pursuant to the Sales Contract shall be based upon Seller's prices in effect at the time of shipment and any order acceptance will be on the basis of the freight rates in effect at the time of shipment. In the event of an increase or decrease in the applicable freight charges before the material is shipped, such changes in freight charges will be for the account of Buyer. Price advances, discounts, extras and terms and conditions are subject to change without notice. Unless otherwise provided in the purchase order attached hereto, Seller is deemed to have delivered when Goods are placed at the disposal of the Buyer at the Seller's point of shipment ("FOB Seller's point of shipment"), and terms of payment shall be net thirty (30) days from date of invoice. Seller may assess finance and service charges of one and a half percent (1.5%) per month (or the highest rate allowed by Canadian law) on invoices not paid within stated payment terms. Open account credit status is offered at the discretion of the Seller. Seller may discontinue open account status or change credit limit as warranted, in its opinion, by the financial condition and/or credit history of the Buyer. Seller may require full or partial payment or payment guarantees in advance of shipment whenever, in its opinion, the financial condition and/or credit history of Buyer so warrants. In addition, Seller may, at any time, suspend performance of any order or require payment in cash, security or other adequate assurance satisfactory to Seller when, in Seller's opinion, the financial condition and/or credit history of Buyer warrants such action.

6. TAXES.

Prices do not include sales, use or other similar federal, provincial, or local taxes. Buyer shall either have a tax-exemption certificate on file with the Seller or pay to Seller, in addition to the price of the Goods and/or Services, any and all applicable taxes, which may be invoiced separately at a later date.

7. DESIGN; EXTRA WORK; BUYER'S MATERIAL.

(a) If any order accepted by Seller contemplates the preparation of special designs by Seller, Buyer will have a responsible representative specifically approve all designs prepared by Seller. (b) If Buyer requests extra work not included in the quotation or original order, Buyer will pay for the extra work at reasonable rates as determined by Seller. (c) In the event spoilage/damage occurs on orders where Buyer furnishes any material Seller shall not be liable for replacement of or damage to such material.

8. RISK OF LOSS, TITLE, SECURITY INTEREST.

Delivery shall occur, and risk of loss shall pass to Buyer, when Goods are placed at the disposal of the Buyer at the Seller's point of shipment ("FOB Seller's point of shipment"). Transportation shall be at Buyer's sole risk and expense, and any claims for losses or damage in transit shall be against the carrier only. However, Seller retains title to all products until paid for in full in cash. Buyer hereby grants a security interest in the Goods in favour of the Seller. Buyer agrees to perform all acts necessary to provide a fully perfected security interest in the Goods in favor of Seller. Seller may, at its option, repossess the same, upon Buyer's default in payment hereunder, and charge Buyer with any deficiency.

9. DELIVERIES AND QUANTITIES.

(a) Delivery dates are not guaranteed but are estimated on the basis of immediate receipt by Seller of all information to be furnished by Buyer and the absence of delay, direct or indirect, resulting from or contributed to by circumstances beyond Seller's reasonable control. If the Goods are non-catalogue goods, Seller may ship overages or underages to the extent of ten percent (10%) of quantity ordered, and Buyer shall pay for such quantity based upon the unit price of the Goods, Seller shall not be required to maintain closer control of quantity, unless specifically agreed to by Seller in writing. Quantities of all items may be determined by weight. Any claims for shortage must be within ten (10) days from the date of receipt of the Goods by Buyer, and in every case the weights found in any particular shipment, including tare, must be given and Seller advised as to the method used by Buyer in computing the count of parts.

(b) In the event that Buyer is unable to accept delivery of the Goods at the time of shipment, Seller shall invoice Buyer for the full purchase price as if shipment had been made and: a. if Seller is able to store such Goods in its own facilities, Buyer will pay Seller the reasonable handling and storage charges for the period of such storage, and b. if Seller is unable to store such Goods at its own facility, Seller reserves the right to arrange handling and storage in a suitable bonded warehouse for the Buyer at Buyer's expense. In cases where handling and storage become necessary, it shall be Buyer's responsibility to notify Seller when shipment is to be made. Seller will make necessary arrangement for shipment at Buyer's expense.

10. RETURNED GOODS.

Goods may not be returned. However, if Seller consents in writing or upon verbal authorization to the return of Goods for any reason, Buyer, who also shall assume all risk of loss of such returned Goods until actual receipt by Seller, must prepay transportation charges.

11. INSPECTION, ACCEPTANCE.

Buyer shall inspect the Goods immediately upon the receipt thereof. All claims by Buyer (including claims for shortages), except only those provided for under the WARRANTY AND LIMITATIONS OF LIABILITY and PATENTS clauses below, must be asserted in writing by Buyer within a 10 day period or they are deemed waived. If this contract involves partial performances, all such claims must be asserted within 10-day period for each partial performance.

Rejection may be only for defects substantially impairing the value of products or work. Buyer's remedy for lesser defects shall be those provided for under the Warranty and Liability clauses. THERE SHALL BE NO REVOCATION OF ACCEPTANCE. If Buyer wrongfully rejects, revokes or delays acceptance of items or work tendered under this contract, or fails to make payment due on or before delivery, or repudiates this contract. Seller shall, at its option, have a right to recover as damages, either the price as stated herein (upon recovery of the price, the items involved shall become the property of the Buyer) or the Goods and profit (including reasonable overhead) which the Seller would make from performance together with incidental damages and reasonable cost.

12. WARRANTIES AND LIMITATIONS OF LIABILITY.

(a) Seller warrants to the Buyer that its motors, gear motors, DC controllers, and AC drives are free from defects in workmanship and materials when operated under normal conditions and in accordance with nameplate characteristics limits. This warranty shall be in effect for a period of twelve (12) months from date of installation, but in no event be in effect for more than eighteen (18) months from date of manufacture, with the following exceptions: i) EPACT motors ("G" prefix), which are warranted for a period of twenty-four (24) months from the date of installation but for not more than thirty (30) months from date of manufacture, ii) Wattsaver Premium Efficiency three phase motors and Speedmaster inverter-duty motors are warranted for a period of 36 months from the date of installation but for not more than forty two (42) months from the date of manufacture, & iii) Motor brakes provided as coupler brakes, brake kits, or as part of brakemotors are covered by the manufacturers (Stearns or Dings) warranties.

(b) Seller's sole obligation under the foregoing warranties is limited to either, at Seller's option, replacing or repairing defective Goods (or defective parts thereof) within the warranty period. Seller shall not be liable under any circumstances, for consequential or incidental damages, including, but not limited to personal injury or labor costs. This warranty does not cover the cost of removal, installation, or re-testing of the new or repaired Goods or parts, or any other direct or incidental expenses incurred in shipping the product to or from Seller. Replacement Goods or parts are warranted for the remainder of the warranty period applicable to the Goods originally supplied by Seller. All claims for allegedly defective Goods must be made within ten (10) days after Buyer learns of such alleged defects. All claims not made in writing and received by Seller within such 10 day period shall be deemed waived. With prior approval from Seller, Buyer shall return a sample of the alleged defective part, freight prepaid, for Seller's inspection, and no other Goods shall be returned to Seller's District Office/Warehouse, nearest factory, or Authorized Service Center without Seller's written consent. This warranty shall not extend to Goods subjected to misuse, abuse, neglect, accident or improper installation or maintenance, incorrect lubrication, incorrect electrical connection, improper power supply, or Goods which have been altered or repaired by anyone other than Seller or its authorized representative.

(c) Under no circumstances will Seller be responsible for any expense in connection with any repairs made by anyone other than Seller or an Authorized Service Center, unless such repairs have been specifically authorized in writing by the Seller Service and Warranty Department.

(d) In the case of motors, drives, gears and reducers manufactured or marketed by Seller, Seller warrants only that such products, when shipped, shall be capable of delivering the service rating as indicated in Seller's written documents, including quotations and catalogues or as noted on such products, providing such equipment is properly installed, connected, and maintained, correctly lubricated, operating under normal conditions with competent supervision, and within the load limits and voltage range for which it was sold, and provided further that the equipment is free from critical speed, torsional or other type vibration, no matter how induced:

(e) If any prototype or sample was provided to the Buyer, it was used merely to illustrate the general type and quality of Goods and not to warrant that Goods shipped would be of that type or quality;

(f) UNLESS AUTHORIZED IN WRITING BY A CORPORATE OFFICER OR VICE PRESIDENT, NO AGENT, EMPLOYEE OR REPRESENTATIVE OF SELLER HAS ANY AUTHORITY TO BIND SELLER TO ANY AFFIRMATION, REPRESENTATION OR WARRANTY CONCERNING THE GOODS SOLD UNDER THE SALES CONTRACT AND ANY SUCH AFFIRMATION, REPRESENTATION OR WARRANTY HAS NOT FORMED A PART OF THE BASIS OF THE BARGAIN AND SHALL BE UNENFORCEABLE;

(g) THE FOREGOING WARRANTIES ARE EXCLUSIVE AND IN LIEU OF ALL OTHER WARRANTIES OF MECHANABILITY, FITNESS FOR A PARTICULAR PURPOSE AND/OR ANY OTHER TYPE, WHETHER STATUTORY, EXPRESS OR IMPLIED;

(h) Products not manufactured and work not performed by Seller are warranted only to the extent and in the manner that the same are warranted to Seller by Seller's vendors, and then only to the extent that Seller is reasonably able to enforce such warranty. In enforcing such warranty, it is understood Seller shall have no obligation to initiate litigation unless Buyer undertakes to pay all

costs and expenses therefore, including but not limited to Attorney's fees, and indemnifies Seller against any liability to Seller's vendors arising out of such litigation;

(i) THE FOREGOING IS SELLER'S ONLY OBLIGATION AND BUYER'S EXCLUSIVE REMEDY FOR BREACH OF WARRANTY. BUYER'S FAILURE TO SUBMIT A CLAIM AS PROVIDED ABOVE SHALL SERVE TO SPECIFICALLY WAIVE ALL CLAIMS FOR DAMAGES OR OTHER RELIEF INCLUDING BUT NOT LIMITED TO CLAIMS BASED ON LATENT DEFECTS. EVEN IF THE REPAIR OR REPLACEMENT REMEDY SHALL BE DEEMED TO HAVE FAILED OF ITS ESSENTIAL PURPOSE UNDER SECTION 2-719 OF THE UNIFORM COMMERCIAL CODE OR OTHERWISE, SELLER SHALL HAVE NO LIABILITY TO BUYER FOR CONSEQUENTIAL DAMAGES, SUCH AS LOST PROFITS, LOST REVENUES, DAMAGE TO OTHER EQUIPMENT OR LIABILITY OR INJURY TO A THIRD PARTY. IN NO EVENT SHALL BUYER BE ENTITLED TO INCIDENTAL CONSEQUENTIAL, OR SPECIAL DAMAGES, NOR SHALL SELLER'S LIABILITY EXCEED THE PURCHASE PRICE OF THE GOODS. ANY ACTION ARISING HEREUNDER OR RELATED HERETO MUST BE COMMENCED WITHIN ONE (1) YEAR AFTER THE CAUSE OF ACTION OCCURS OR IT SHALL BE BARRED, NOTWITHSTANDING ANY STATUTORY PERIOD OF LIMITATIONS TO THE CONTRARY; and

(j) In the event of the resale of any of the Goods, in whatever form, Buyer will include the following language in a conspicuous place and in a conspicuous manner in a written agreement covering such resale: "THE MANUFACTURER MAKES NO WARRANTIES OR REPRESENTATIONS, EXPRESS OR IMPLIED, BY OPERATION OF LAW OR OTHERWISE, AS TO THE MERCHANTABILITY OR FITNESS FOR A PARTICULAR PURPOSE OF THE GOODS SOLD HEREUNDER. BUYER ACKNOWLEDGES THAT IT ALONE HAS DETERMINED THAT THE GOODS PURCHASED HEREUNDER WILL SUITABLY MEET THE REQUIREMENTS OF THEIR INTENDED USE. IN NO EVENT WILL MANUFACTURER BE LIABLE FOR CONSEQUENTIAL, INCIDENTAL OR OTHER DAMAGES." In the event of the resale of any of the Goods, in whatever form, Buyer will include the following language in a conspicuous place and in a conspicuous manner in a written agreement covering such resale: "THE MANUFACTURER MAKES NO WARRANTIES OR REPRESENTATIONS, EXPRESS OR IMPLIED, BY OPERATION OF LAW OR OTHERWISE, AS TO THE MERCHANTABILITY OR FITNESS FOR A PARTICULAR PURPOSE OF THE GOODS SOLD HEREUNDER. BUYER ACKNOWLEDGES THAT IT ALONE HAS DETERMINED THAT THE GOODS PURCHASED HEREUNDER WILL SUITABLY MEET THE REQUIREMENTS OF THEIR INTENDED USE, IN NO EVENT WILL MANUFACTURER BE LIABLE FOR CONSEQUENTIAL, INCIDENTAL OR OTHER DAMAGES."

(k) Nuclear Use Disclaimer – Goods sold by Seller are not intended for use in connection with any nuclear facility or activity. If so used, Seller disclaims all liability for an nuclear damage, injury or contamination, and Buyer shall indemnify and hold Seller, its officers, agents, employees, successors, assigns and customers harmless from and against any and all losses, damages or expenses of whatever form or nature (including attorney's fees and other costs of defending any action) which they or any of them may sustain or incur, whether as a result of breach of contract, warranty, tort (including negligence) or otherwise, by reason of such use.

13. REMEDIES AND LIMITATIONS OF LIABILITY.

In the event Buyer claims Seller has breached any of its obligations under the Sales Contract, whether of warranty or otherwise, Seller may request the return of Goods and tender to Buyer, at Seller's option, a replacement shipment of Goods. If Seller so requests the return of the Goods, the Goods will be redelivered to Seller in accordance with Seller's instructions and at Buyer's expense. Except as herein provided, Seller shall have no further obligation under the Sales Contract. The remedies contained in this paragraph and paragraph 12 hereof shall constitute the sole recourse of Buyer against Seller for breach of any Seller's obligations under the Sales Contract, whether warranty or otherwise.

14. TECHNICAL ADVICE.

Any technical advice furnished or recommendation made by Seller or any representative of Seller concerning any use or application of any of the Goods is believed to be reliable, but SELLER MAKES NO WARRANTY, EXPRESSED OR IMPLIED, ON RESULTS TO BE OBTAINED. BUYER ASSUMES ALL RESPONSIBILITY FOR LOSS OR DAMAGE RESULTING FROM THE HANDLING OR USE OF ANY OF THE GOODS.

15. FORCE MAJEURE.

Seller shall not be liable for failure to perform its obligations under the Sales Contract in whole or in part caused by the occurrence of any contingencies beyond the reasonable control either of Seller or of suppliers of Seller. If any such contingency occurs, Seller may allocate Goods and deliveries among Seller's customers.

16. ASSIGNMENT AND DELEGATION.

No right or interest in the Sales Contract shall be assigned by Buyer without Seller's prior written consent, and no delegation of any obligation owed, or the performance of any obligation by Buyer shall be made without Seller's prior written consent. Any attempt at assignment or delegation shall be wholly void and totally ineffective for all purposes unless made in conformity with this paragraph.

Note

This catalogue is a guide only. For extended descriptions please refer to original brand catalogues. Every effort has been made to ensure the accuracy of this cross reference guide to Original Equipment Manufacturers (OEM) replacement motors. Regal Beloit Canada accepts no responsibility for errors which may be caused by subsequent changes in model numbers or motor specifications. In keeping with Regal Beloit Canada's policy of continuous improvement current stock motors may vary from those built in the past. Every effort has been made to maintain the interchangeability of models listed in this guide, but construction features and/or operating characteristics may have been improved. Always compare motors for interchangeability prior to recommending them for installation. If you are unsure of the interchangeability of any particular motor please contact Air-Con Technology/Regal Beloit Canada toll free (877) 564-8171.

17. PATTERNS AND TOOLING.

Unless otherwise agreed to in writing with Buyer, Seller shall retain title to and possession of all special tooling, patterns and dies whether paid for by Buyer or not, but such special tooling, patterns and dies that are specifically paid for by Buyer will be held by Seller exclusively for the manufacture of Buyer's Goods for not more than 2 years after the date of Buyer's last order requiring their use. Seller will exercise reasonable care in handling and storing any tooling, patterns or dies specifically paid for by Buyer, but Seller shall not be liable for damage or loss thereof.

18. PATENTS -- SELLER MAKES NO REPRESENTATION OR WARRANTY WITH RESPECT TO THE PATENTABILITY OF THE GOODS OR THAT ANY OF THE GOODS WILL BE FREE FROM CLAIMS OF INFRINGEMENT.

Buyer agrees to indemnify and defend Seller in any such suit, action or proceeding for any claim resulting from actual or alleged infringement of any domestic or foreign patent for (i) any failure, construction or design incorporated at Buyer's request in any goods or to adapt such goods to the particular use of Buyer or Buyer's customers or (ii) any additions, changes or adaptations made by Buyer or Buyer's customers after delivery of the goods.

19. CONFIDENTIAL INFORMATION.

All drawings, diagrams, specifications, technical data and other materials furnished by Seller and identified by Seller as confidential are and shall remain the exclusive property of Seller and shall be returned to Seller upon request. Buyer agrees to treat such information and material as confidential and not to reproduce or disclose such information or materials without Seller's prior written consent. This paragraph does not apply to any information already known to and readily accessible in the trade or which may become so through no fault of Buyer.

20. CHANGES.

Seller may, at any time, without notice, make changes (whether in design, material, improvements or otherwise) in any catalogue goods, and may discontinue the manufacture of any catalogue goods, all in its sole discretion, without incurring any obligations of any kind as a result thereof, whether for failure to fill an order of Buyer or otherwise.

21. CANCELLATION.

The Buyer may not cancel purchase orders without the prior written consent of Seller. This consent will be conditioned on Buyer's agreement to pay Seller's cancellation charge. Purchase orders for Goods that are substantially complete, as judged by Seller, may not be cancelled; and will be shipped and invoiced at the price on the order. For Goods that are not substantially complete, the cancellation charge shall amount to all costs and expenses incurred by Seller and arising out of or in connection with Buyer's order, net of recoverability, but in no event less than 10% of the total invoice price of the equipment or more than the total invoice price.

22. INSTALLATION.

Installation of the Goods shall be by Buyer unless otherwise specifically stated in the Sales Contract.

23. SEVERABILITY.

If any term or provision contained in the Sales Contract is declared or held invalid by a court of competent jurisdiction, such declaration or holding shall not affect the validity of any other term, clause or provision contained herein.

24. GOVERNING LAW AND LIMITATION.

(a) The formation and performance of the Sales Contract shall be deemed to have been made and governed by and construed in accordance with the laws of the Province of Ontario, Canada (b) Buyer hereby agrees to the jurisdiction of any province or federal court located in the county of Seller's principal place of business. Buyer waives any objection based on forum non conveniens and any objection to venue of any action instituted hereunder, and consents to the granting of such legal or equitable relief as is deemed appropriate by a court of competent jurisdiction; (c) The Seller and the Buyer expressly exclude the application of the United Nations Convention on Contracts for the International Sale of Goods; and (d) Attorney's Fees – Buyer agrees to pay all of Seller's costs and expenses of collection and litigation, including but not limited to attorney's fees and costs.

Revised August 17, 2011

Specifications are subject to change without notice

OTHER MOTORS TO STOCK

[illegible]

OTHER MOTORS TO STOCK

[illegible]

ORDER NOTES

H.P

RPM

VOLTS/AMPS

PHASE

ROTATION

SHAFT DIA.

FRAME

ENCLOSURE

MOUNTING

APPLICATION/
EQUIPMENT/MAKE/MODEL

PART # ON MOTOR

NOTES:



Tel (877) 564-8171 | Fax (905) 564-7320
Mississauga, ON L5T 2N7
www.air-con.ca

