



800 Series Gear Reducers Built For Industrial Use

Precision mounting surfaces and extra threaded bolt holes on top and bottom for flexibility and to accept a wide range of stock mounting accessories.

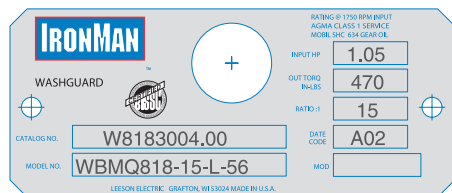
Cast iron NEMA C input flange with machined fits for precision alignment of motor and bearings.

Push-off holes drilled and tapped into flange for quick motor removal on quill input styles (56 & 140TC frames).

O-rings on input and output covers eliminate gaskets, sealants and leaks.

Mounting dimensions are interchangeable with Baldor 900 series, Boston Gear, Browning Raider, Falk, Grove, Morse Invader and other "industry standard" reducers.

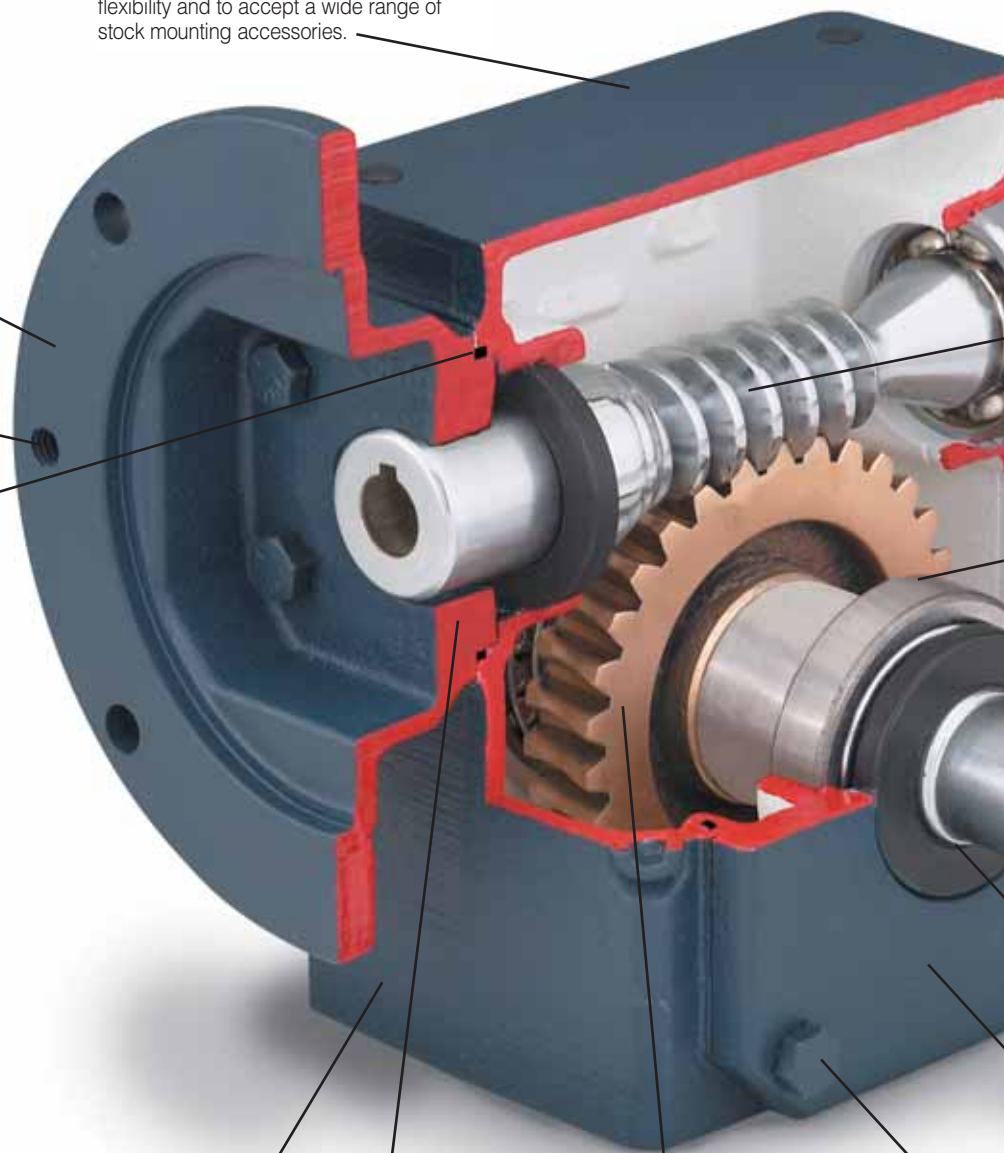
Permanent "full fact" metal nameplate is drive screwed to housing for easy field identification even after years of service.



IronMan™ fine-grained, one-piece cast housing for rigidity and alignment. Machined for precision alignment of worm, worm gear, bearings and mounting surfaces. Superior resistance to environmental contaminants with high heat dissipation and noise reduction. BISSC certified reducers available for food service applications.

Bronze alloy worm gear is chill cast from premium quality bronze for maximum strength, lubricity and superior life.

Seal Guard** on quill-input styles protects input seal from damage during motor installation.





LEESON CANADA OFFERS AN ARRAY OF INDUSTRIAL GEAR REDUCER SOLUTIONS

OTHER PRODUCTS

ALUMINUM OEM REDUCERS

Metric and NEMA/AGMA



Oversized positively-retained high speed input shaft bearing for higher shock load capacity, shaft alignment and seal life. Ideal for frequent starting and reversing applications.

Single-piece, alloy steel input worm shaft. High lead angle worm is case-hardened, ground and polished for enhanced efficiency and noise reduction.

Tapered roller bearings on output shaft for high overhung and thrust load capacities.

High capacity oil reservoir reduces noise, aids heat dissipation and lubricates for life. Multiple venting options for multi-position mounting. Factory filled with premium Mobil SHC634 synthetic lubricant.

Robust output shaft of high strength steel alloy for superior torque and overhung load capacities.

Viton® premium quality, double lip seals** throughout —on micro-finished surfaces— mean extended life, resistance to high temperature, abrasion and chemicals.

Single output cover design provides precise centering of gear for lower noise levels and higher overall gear efficiencies.

Premium Grade 5 heat-treated bolts used throughout.

IN-LINE REDUCERS



FOOTE-JONES INDUSTRIAL GEARING

Large-scale parallel shaft and right-angle gear drives



CALL FOR COMPLETE CATALOGUES

Stock Styles

Modified Stock Styles

Style BMQ

MOTORIZED
C FLANGE
QUILL
INPUT



Horizontal Base
Worm Over

Style TMQ



Horizontal Base
Worm Under

Style UMQ



*

Style BM

MOTORIZED
C FLANGE
FLEXIBLE
COUPLING
INPUT



Style TM



Style UM



*

Style B

NON-FLANGED



Style T



Style U



*

* Not a recommended mounting style.
Consult LEESON for selection assistance.

SINGLE REDUCTION GEAR REDUCERS • LIST PRICES

Discount Symbol M

MODEL NUMBER	UNIT SIZE													
	813	815	818	821	824	826	830	832	842	852	8600	8700	8800	81000
B	\$423	\$444	\$461	\$551	\$677	\$776	\$936	\$1101	\$1806	\$2711	\$4436	\$5874	\$8222	\$12815
T & U	459	482	498	591	720	827	995	1170	1895	2838	4721	6390	8633	13452
VL & VH	488	510	530	627	755	860	1034	1212	1982	2976	4980	6788	9404	14799
J	488	510	530	627	755	860	1034	1212	1982	2976	4980	—	—	—
F	512	543	551	666	810	891	1077	1260	2007	2994	5028	6518	9131	14222
FE	—	—	—	—	—	—	—	1491	2480	3704	5865	6878	9477	14319
BM & BMQ	518	539	557	651	791	933	1106	1283	2088	3143	4967	6579	—	—
TM & TMQ	554	582	593	690	836	986	1164	1355	2178	3267	5253	7094	—	—
UM & UMQ	554	582	593	690	836	986	1164	1355	2178	3267	5253	7094	—	—
VLM & VHM	582	611	624	726	870	1019	1203	1395	2265	3408	5511	7493	—	—
VLMQ & VHMQ	582	611	624	726	870	1019	1203	1395	2265	3408	5511	—	—	—
JM & JMQ	582	611	624	726	870	1019	1203	1395	2265	3408	5511	—	—	—
FM & FMQ	606	629	647	765	918	1067	1247	1442	2291	3425	5559	7223	—	—
Add for Double Output	48	48	48	64	69	69	79	79	174	253	411	523	569	778
Add for Double Input	241	261	283	285	339	339	402	425	432	475	913	1129	1323	1817
Add for Fan	—	—	—	—	—	—	77	77	93	93	149	STD	STD	STD

Vertical Input Shaft

Style JMQ



Vertical Output Shaft Low Base

Style VLMQ **



Vertical Output Shaft High Base

Style VHMQ **



Flange Mounted* Output Shaft

Style FMQ



Style JM



Style VLM **



Style VHM **



Style FM



Style J



Style VL **



Style VH **



Style F



** SPECIFY SHAFT UP OR DOWN FOR THESE STYLES.

* Flange mount may not be exactly as shown.

GEAR REDUCER ACCESSORIES • LIST PRICES

Discount Symbol M

MODEL NUMBER	UNIT SIZE														
	813	815	818	821	824	826	830	832	842	852	8600	8700	8800	81000	
Horizontal Base Kit	\$36	\$38	\$36	\$39	\$45	\$53	\$62	\$71	\$90	\$126	\$287	\$308	\$405	\$636	
Vertical Base Kit	65	66	69	75	78	84	98	111	177	266	545	584	824	1287	
"J" Mount Base Kit	65	66	69	75	78	84	98	111	177	266	545	—	—	—	
Hollow Shaft Output Mounting Flange	89	90	90	99	99	114	147	159	203	282	558	—	—	—	
Flexible Coupled "C" Flange	Single	95	96	96	99	114	159	171	182	282	432	533	704	902	—
	Double	95	95	95	95	95	95	95	96	99	159	171	171	240	378
Hollow Shaft Bushing Kit	—	—	102	102	102	102	149	149	270	413	488	584	870	888	
Hollow Shaft Tie Rod Kit	149	149	149	149	149	149	149	149	149	330	330	330	330	330	
Fan Kit	—	—	—	—	—	—	77	77	93	93	149	STD	STD	STD	
Top Motor Mount Kit	—	—	—	240	270	270	—	320	437	437	437	536	696	812	
Scoop Mount Kit	—	—	—	—	—	896	—	1061	1434	1590	1809	1805	2088	2394	
Slide Base	248	248	248	248	248	248	248	248	—	—	—	—	—	—	
Sight Gage	24	24	24	24	24	24	24	24	26	35	35	35	35	45	
Tachometer Kit	813	813	813	813	813	813	923	923	1044	1044	1044	1044	1044	—	



FRACTIONAL & INTEGRAL HP GEAR REDUCERS

TECHNICAL INFORMATION

A.G.M.A. SERVICE FACTORS

Application	Service Factor	
	3-10 Hours	Over 10 Hours
AGITATORS		
Pure Liquids	1.00	1.25
Liquids & Solids	1.25	1.50
Liquids-Variable Density	1.25	1.50
APRON CONVEYORS		
Uniformly Loaded or Fed	1.00	1.25
Heavy Duty	1.25	1.50
APRON FEEDERS		
	1.25	1.50
ASSEMBLY CONVEYORS		
Uniformly Loaded or Fed	1.00	1.25
Heavy Duty	1.25	1.50
BARGE HAUL PULLERS		
	1.50	1.75
BARKING		
Drums (Coupling Connected)		1.75
Mechanical		1.75
BAR SCREENS (Sewage)		
	1.00	1.25
BELT CONVEYORS		
Uniformly Loaded or Fed	1.00	1.25
Heavy Duty	1.25	1.50
BELT FEEDERS		
	1.25	1.50
BLOWERS		
Centrifugal	1.00	1.25
Lobe	1.25	1.50
Vane	1.00	1.25
BOLTING MACHINERY		
	1.00	1.25
BREWING & DISTILLING		
Bottling Machinery	1.00	1.25
Brew Kettles, Cont. Duty	1.00	1.25
Can Filling Machines	1.00	1.25
Cookers-Cont. Duty	1.00	1.25
Mash Tubs-Cont. Duty	1.00	1.25
Scale Hoppers-Frequent Starts	1.25	1.50
BUCKET		
Conveyors Uniform	1.00	1.25
Conveyors Heavy Duty	1.25	1.50
Elevators Cont.	1.00	1.25
Elevators Uniform	1.00	1.25
Elevators Heavy Duty	1.25	1.50
CALENDARS		
Rubber		1.50
Textile	1.25	1.50
CANE KNIVES		
	1.00	1.25
CAN FILLING MACHINES		
	1.00	1.25
CAR DUMPERS		
	1.50	1.75
CAR PULLERS		
	1.25	1.50
CENTRIFUGAL		
Blowers, Compressors, Discharge Elevator, Fans or Pumps	1.00	1.25
CHAIN CONVEYORS		
Uniformly Loaded or Fed	1.00	1.25
Heavy Duty	1.25	1.50
CLARIFIERS		
	1.00	1.25
CLASSIFIERS		
	1.25	1.50
CLAY WORKING INDUSTRY		
Brick Press	1.75	2.00
Briquett Machines	1.75	2.00
Clay Working Machinery	1.25	1.50
Plug Mills	1.25	1.50
COMPRESSORS		
Centrifugal	1.00	1.25
Lobe	1.25	1.50
Reciprocating:		
Multi-Cylinder	1.25	1.50
Single Cylinder	1.50	1.75
CONCRETE MIXERS		
Continuous	1.25	1.50
Intermittent	1.25	1.50
CONVEYORS-Uniformly Loaded or Fed		
Apron, Assembly, Belt, Bucket, Chain, Flight, Oven, Screw	1.00	1.25
CONVEYORS-Severe Duty		
Live Roll		Contact Factory
Reciprocating, Shaker	1.50	1.75
COOLING TOWER FANS		
		Contact Factory
CRANES		
Dry Dock Cranes		Contact Factory
Main Hoist	1.00	1.25
Bridge and Trolley Travel		Contact Factory
CRUSHERS		
Ore or Stone	1.50	1.75
Sugar		1.50
DISC FEEDERS		
	1.00	1.25

DOUBLE ACTING PUMPS		
2 or more Cylinders	1.25	1.50
Single Cylinder		Contact Factory
DRAW BENCH (Metal Mills)		
Carriage & Main Drive	1.25	1.50
DREDGES		
Cable Reels, Conveyors	1.25	1.50
Cutter Head & Jig Drives	1.75	2.00
Maneuvering Winches, Pumps	1.25	1.50
Screen Drives	1.50	1.75
Stackers, Utility Winches	1.25	1.50
ELEVATORS		
Bucket-Uniform Load	1.00	1.25
Bucket-Heavy Duty	1.25	1.50
Bucket-Continuous	1.00	1.25
Centrifugal Discharge	1.00	1.25
Escalators		Not Approved
Freight		Not Approved
Gravity Discharge	1.00	1.25
Man Lifts, Passenger		Not Approved
EXTRUDERS (Plastic)		
Film Sheet, Coating, Rods, Pipe Tubing	1.25	1.25
Blow Molders, Pre-plasticizers		1.50
FANS		
Centrifugal	1.00	1.25
COOLING TOWERS		
Forced Draft		Contact Factory
Induced Draft	1.25	1.50
Large (Mine, etc.)	1.25	1.50
Large Industrial	1.25	1.50
Light (Small Diameter)	1.00	1.25
FEEDERS		
Apron, Belt	1.25	1.50
Disc	1.00	1.25
Reciprocating	1.75	2.00
Screw	1.25	1.50
FLIGHT		
Conveyors, Uniform	1.00	1.25
Conveyors, Heavy	1.25	1.50
FOOD INDUSTRY		
Beet Slicers	1.25	1.50
Bottling, Can Filling Mach.	1.00	1.25
Cereal Cookers	1.00	1.25
Dough Mixers, Meat Grinders	1.25	1.50
HAMMER MILLS		
	1.50	1.75
HOISTS		
Heavy Duty	1.75	2.00
Medium Duty	1.25	1.50
Skip Hoist	1.25	1.50
INDUCED DRAFT FANS		
	1.25	1.50
LAUNDRY WASHERS AND TUMBLERS		
	1.25	1.50
LINE SHAFTS		
Driving Processing Equipment	1.25	1.50
Other Line Shafts, Light	1.00	1.25
LUMBER INDUSTRY		
Barkers-Spindle Feed	1.25	1.50
Barkers-Main Drive	1.75	1.75
Carriage Drive		Contact Factory
CONVEYORS		
Burner	1.25	1.50
Main or Heavy Duty	1.50	1.50
Main Log	1.75	2.00
Re-saw Merry-Go-Round	1.25	1.50
Slab	1.75	2.00
Transfer	1.25	1.50
Chains-Floor	1.50	1.50
Chains-Green	1.50	1.75
Cut-Off Saws-Chain & Drag	1.50	1.75
Debarking Drums	1.75	2.00
Feeds-Edger	1.25	1.50
Feeds-Gang	1.50	1.50
Feeds-Trimmer	1.25	1.50
Log Deck	1.50	1.50
Log Hauls-Incline Well Type	1.50	1.50
Log Turning Devices	1.50	1.50
Planer Feed	1.25	1.50
Planer Tilling Hoist	1.50	1.50
Rolls-Live-Off Bearing-Roll Cases	1.50	1.50
Sorting Table, Tipple Hoist	1.25	1.50
Transfers-Chain & Craneway	1.50	1.75
Tray Drives	1.25	1.50
Veneer Lathe Drives		Contact Factory
MACHINE TOOLS		
Auxiliary Drives	1.00	1.25
Bending Rolls	1.25	1.50
Main Drives	1.25	1.50
Notching Press (Belted)		Contact Factory
Plate Planers	1.50	1.75
Punch Press (Geared)	1.50	1.75
Tapping Machines	1.50	1.75

METAL MILLS		
Draw Bench Carriages & Main Drives	1.25	1.50
Pinch, Dryer and Scrubber		Contact Factory
Rolls Reversing		Contact Factory
Slitters	1.25	1.50
Table Conveyors Non-Reversing		Contact Factory
Group Drives	1.25	1.50
Individual Drives	1.50	1.75
Reversing Wire Drawing & Flattening Machines	1.25	1.50
Wire Winding Machines	1.25	1.50
MILLS, ROTARY		
Ball and Rod Mills with Spur Ring Gear		1.75
with Helical Ring Gear		1.50
Direct Connect		1.50
Cement Kilns, Dryers, Coolers, Pebble, Plain & Wedge Bar Mills		1.50
Tumbling Barrels	1.50	1.75
MIXERS (Also see Agitators)		
Concrete, Cont. & Int.	1.25	1.50
Constant Density	1.00	1.25
Variable Density	1.25	1.50
OIL INDUSTRY		
Chillers	1.25	1.50
Oil Well Pumping		Contact Factory
Paraffin Filter Press	1.25	1.50
Rotary Kilns	1.25	1.50
PAPER MILLS		
		Contact Factory
PASSENGER ELEVATORS		
		Contact Factory
PLATE PLANERS		
	1.50	1.75
PRINTING PRESSES		
		Contact Factory
PUMPS		
Centrifugal	1.00	1.25
Proportioning	1.25	1.50
Reciprocating		
Single Act, 3 or more Cyl.	1.25	1.50
Double Act, 2 or more Cyl.	1.25	1.50
Single Act, 1 or 2 Cyl		Contact Factory
Double Act, 1 Cyl.		Contact Factory
Rotary: Gear, Lobe, Vane	1.00	1.25
PUNCH PRESSES (Gear Driven)		
	1.50	1.75
RUBBER & PLASTIC INDUSTRIES		
Calendars		1.50
Crackers		1.75
Laboratory Equipment	1.25	1.50
Mills (2 on line)	1.50	1.50
Mills (3 on line)	1.25	1.50
Mixing Mills	1.50	1.50
Refiners		1.50
Sheeters		1.50
Tire Building & Machines		Contact Factory
Tire & Tube Press Openers		Contact Factory
Tubers & Strainers		1.50
Warming Mills		1.50
SCREENS		
Air Washing	1.00	1.25
Rotary-Sand or Gravel	1.25	1.50
Traveling Water Intake	1.00	1.25
SEWAGE DISPOSAL		
Bar Screens	1.00	1.25
Chemical Feeders	1.00	1.25
Collectors	1.00	1.25
Dewatering Screens	1.25	1.50
Scum Breakers	1.25	1.50
Slow or Rapid Mixers	1.25	1.50
Thickeners	1.25	1.50
Vacuum Filters	1.25	1.50
SKI TOWS & LIFTS		
		Not Approved
STOKERS		
	1.00	1.25
STONE CRUSHERS		
	1.50	1.75
SUGAR INDUSTRY		
Cane Knives, Crushers, Mills		1.50
TABLE CONVEYORS (Non-Reversing)		
Group Drives	1.25	1.50
Individual Drives	1.50	1.75
Reversing		Contact Factory
TEXTILE INDUSTRY		
Batchers, Calendars	1.25	1.50
Card Machines	1.25	1.50
Dry Cans, Dryers	1.25	1.50
Dyeing Machinery	1.25	1.50
Knitting Machinery		Contact Factory
Looms, Mangles, Nappers, Pads	1.25	1.50
Range Drives		Contact Factory
Slashers, Soapers, Spinners	1.25	1.50
Tenter Frames, Washers, Winders	1.25	1.50
TUMBLING BARRELS		
	1.50	1.75
VANE BLOWERS		
	1.00	1.25
WINDLASS		
		Contact Factory
WIRE		
Drawing Machines	1.25	1.50
Winding Machines	1.25	1.50

HOW TO USE THE QUICK SELECT: Cross reference Output RPM with Input Horsepower to determine reducer model (e.g. 18). Dimensions are on pages 144 and 145 for “T” (top-driven worm above output) and “TMQ” (top-driven motorized). The Quick Select charts are for reference only. For full sizing information including torques and other input speeds consult your LEESON Canada Gear catalogue.

Complete the catalogue number:

Unit	Size	Ratio	Shaft Position
TMQ	32	60:1	Assembly 1
T	21	30:1	Assembly 2

QUICK-SELECT

CLASS I (1.0 Service Factor)

Reduc. Ratio	Output RPM	Input Horsepower @ 1750 RPM																				
		1/6	1/4	1/3	1/2	3/4	1	1½	2	3	5	7½	10	15	20	25	30	40	50	60	75	100
5	350	13	13	13	13	13	13	18	18	21	26	30	42	42	52	52	600	700	700	800	1000	1000
7.5	233	13	13	13	13	13	18	18	21	24	30	32	42	52	52	600	700	700	800	1000	1000	
10	175	13	13	13	13	13	18	21	21	24	30	42	42	52	600	700	700	800	1000	1000		
15	117	13	13	13	13	18	18	21	24	30	32	42	52	600	700	700	800	1000	1000			
20	87.5	13	13	13	18	18	21	24	26	30	42	42	52	700	700	800	1000	1000				
25	70.0	13	13	13	18	21	21	24	30	32	42	52	600	700	800	1000	1000					
30	58.3	13	13	13	18	21	24	26	30	32	42	52	700	800	1000	1000						
40	43.8	13	13	18	21	24	24	30	32	42	52	600	700	1000	1000							
50	35	13	18	18	21	24	26	30	42	42	52	700	800	1000								
60	29.2	13	18	21	24	26	30	32	42	52	600	800	1000									
70	25.0	NA	NA	NA	NA	NA	NA	NA	NA	NA	700	800	1000									
80	21.9	18	21	24	26	30	32	42	52	600												
100	17.5	21	24	26	30	42	42	52	52													

NOT AVAILABLE

NOTE: This chart is meant only as a guide. For actual ratings see LEESON Gear Catalogue.

CLASS II (1.25 Service Factor)

Reduc. Ratio	Output RPM	Input Horsepower @ 1750 RPM																				
		1/6	1/4	1/3	1/2	3/4	1	1½	2	3	5	7½	10	15	20	25	30	40	50	60	75	100
5	350	13	13	13	13	13	15	21	21	24	30	42	42	52	52	600	700	700	800	1000	1000	
7.5	233	13	13	13	13	15	15	21	24	26	32	42	42	52	600	700	700	800	1000	1000		
10	175	13	13	13	13	15	18	21	24	26	32	42	42	52	700	700	800	1000	1000			
15	117	13	13	13	15	18	21	24	26	30	42	42	52	700	700	800	1000	1000				
20	87.5	13	13	13	15	21	21	24	30	32	42	42	600	700	800	1000	1000					
25	70	13	13	15	18	21	24	26	30	42	42	52	700	800	1000	1000						
30	58.3	13	13	15	21	24	24	30	32	42	52	52	700	1000	1000							
40	43.8	13	15	18	21	24	26	32	42	42	52	600	800	1000								
50	35	13	15	21	24	26	30	32	42	52	600	700	1000									
60	29.2	15	18	21	24	30	30	32	42	52	700	800	1000									
70	25	NA	NA	NA	NA	NA	NA	700	700	800	1000											
80	21.9	15	21	24	30	32	42	52	52	600												
100	17.5	21	24	30	32	42	52	52	600													

NOT AVAILABLE

NOTE: This chart is meant only as a guide. For actual ratings see LEESON Gear Catalogue.

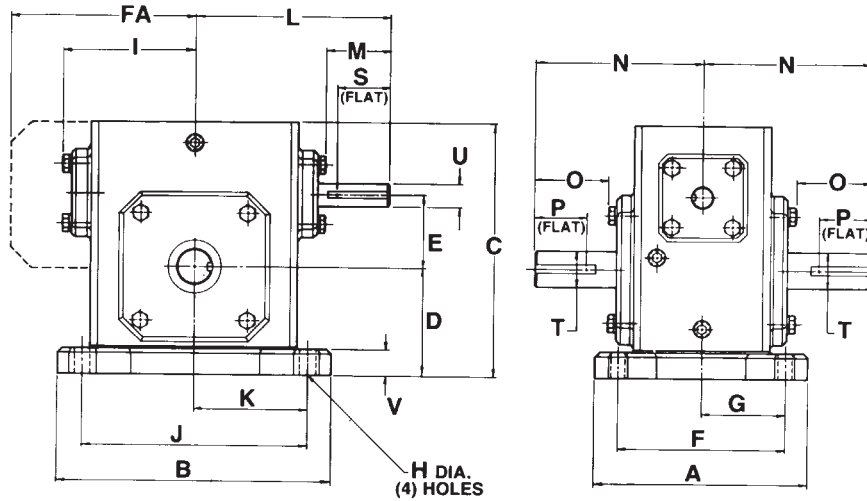
WASHGUARD REDUCER FEATURES

LEESON washdown reducers are designed and built to withstand the rigors of high pressure washdowns in food service and other wet or humid conditions. They combine the standard IRONMAN™ features noted on page 139, with added WASHGUARD features assuring trouble free operation. Use these with LEESON WASHGUARD “Duck” motors for a gearmotor with truly unmatched ability to thrive under conditions that quickly destroy most motors and gear reducers.

Standard WASHGUARD Features Include

- Stainless Steel Output Shaft
- O-Ring on Input Flange (56 & 140TC Flanges)
- Stainless Steel Hardware
- Food Grade White Epoxy Paint
- Viton Double lip seals
- Patented Forsheda V-ring output shaft seals to resist high pressure water
- Spring loaded pressure vent
- Square head stainless steel pipe plugs
- Food grade synthetic lubricant USDA CLASS H2 – Mobil SHC634
- Stainless Steel nameplate, riveted to frame and adhesive backed to eliminate particle entrapment
- BISSC Certified – Bakery Industry Sanitation Standards Committee





DIMENSIONS

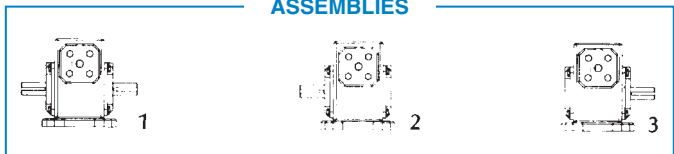
SIZE	A	B	C	D	E	F	G	H	I	J	K	L	M	N	O	P
10	4.38	5.30	4.125	1.812	1.000	2.88	1.44	.344	2.20	3.75	1.88	3.12	.92	2.88	1.14	1.00
13	5.38	5.38	5.156	2.250	1.333	4.38*	2.19*	.344	2.69	4.38	2.19	4.45	1.76	3.99	1.88	1.50
15	5.75	7.00	5.970	2.500	1.540	4.31	2.16	.406	3.21	5.25	2.62	4.91	1.76	4.31	1.76	1.50
18	5.75	7.00	6.438	2.750	1.750	4.50	2.25	.406	3.32	5.75	2.88	5.08	1.76	4.31	1.82	1.38
21	6.00	7.69	7.094	3.000	2.062	4.68	2.34	.468	3.69	6.38	3.19	5.45	1.76	4.68	2.06	1.44
24	6.19	8.38	7.679	3.250	2.375	4.88	2.44	.469	3.94	7.06	3.53	6.05	2.11	5.14	2.36	1.75
26	6.50	9.25	8.750	3.688	2.625	5.25	2.62	.531	4.54	8.00	4.00	6.57	2.03	5.63	2.33	2.00
30	7.12	9.68	9.625	4.000	3.000	5.88	2.94	.531	4.97	8.44	4.22	7.25	2.33	6.75	3.38	2.25
32	7.75	11.12	10.250	4.375	3.250	6.12	3.06	.531	5.22	9.50	4.75	7.60	2.38	7.06	3.26	2.62
42	9.75	13.25	12.375	5.437	4.250	7.62	3.81	.656	6.24	11.12	5.56	9.56	3.32	8.12	3.82	3.06
52	10.50	16.25	15.125	6.250	5.250	8.38	4.19	.781	7.61	14.12	7.06	10.88	3.26	9.06	4.02	3.50
600	12.00	19.00	17.750	7.750	6.000	9.50	4.75	.875	8.35	16.50	8.25	12.25	3.78	10.00	4.66	4.00
700	13.40	15.36	20.360	9.000	7.000	11.24	5.62	1.000	N/A	13.00	6.50	11.50	3.00	11.76	4.84	4.00
800	13.52	17.40	22.840	10.500	8.000	11.52	5.76	1.000	N/A	14.76	7.38	12.50	2.74	12.26	5.38	4.50
1000	16.88	21.24	27.440	12.000	10.000	14.00	7.00	1.250	N/A	17.00	8.50	15.50	3.76	14.76	5.98	5.00

This chart is meant only as a guide. For actual ratings, see LEESON Gear Catalogue.

SIZE	T	KWY.	U	KWY.	V	FA
10	.500	$\frac{1}{8} \times \frac{1}{16}$.375	$\frac{3}{32} \times \frac{3}{64}$.44	N/A
13	.625	$\frac{3}{16} \times \frac{3}{32}$.500	$\frac{1}{8} \times \frac{1}{16}$.47	N/A
15	.750	$\frac{3}{16} \times \frac{3}{32}$.625	$\frac{3}{16} \times \frac{3}{32}$.63	N/A
18	.875	$\frac{3}{16} \times \frac{3}{32}$.625	$\frac{3}{16} \times \frac{3}{32}$.63	N/A
21	1.000	$\frac{1}{4} \times \frac{1}{8}$.625	$\frac{3}{16} \times \frac{3}{32}$.66	N/A
24	1.125	$\frac{1}{4} \times \frac{1}{8}$.750	$\frac{3}{16} \times \frac{3}{32}$.69	N/A
26	1.250**	$\frac{1}{4} \times \frac{1}{8}$.750	$\frac{3}{16} \times \frac{3}{32}$.69	N/A
30	1.250	$\frac{1}{4} \times \frac{1}{8}$.875	$\frac{3}{16} \times \frac{3}{32}$.75	6.91
32	1.500	$\frac{3}{8} \times \frac{3}{16}$.875	$\frac{3}{16} \times \frac{3}{32}$.81	7.16
42	1.875	$\frac{1}{2} \times \frac{1}{4}$	1.250	$\frac{1}{4} \times \frac{1}{8}$.94	8.21
52	2.000	$\frac{1}{2} \times \frac{1}{4}$	1.250	$\frac{1}{4} \times \frac{1}{8}$	1.06	9.58
600	2.500	$\frac{5}{8} \times \frac{5}{16}$	1.500	$\frac{3}{8} \times \frac{3}{16}$	1.12	11.50
700	2.750	$\frac{5}{8} \times \frac{5}{16}$	1.625	$\frac{3}{8} \times \frac{3}{16}$	1.42	11.36
800	3.000	$\frac{3}{4} \times \frac{3}{8}$	1.875	$\frac{1}{2} \times \frac{1}{4}$	1.64	12.32
1,000	3.750	$\frac{7}{8} \times \frac{7}{16}$	2.250	$\frac{1}{2} \times \frac{1}{4}$	1.64	14.48

*Both mountings in casting **1.125 also available

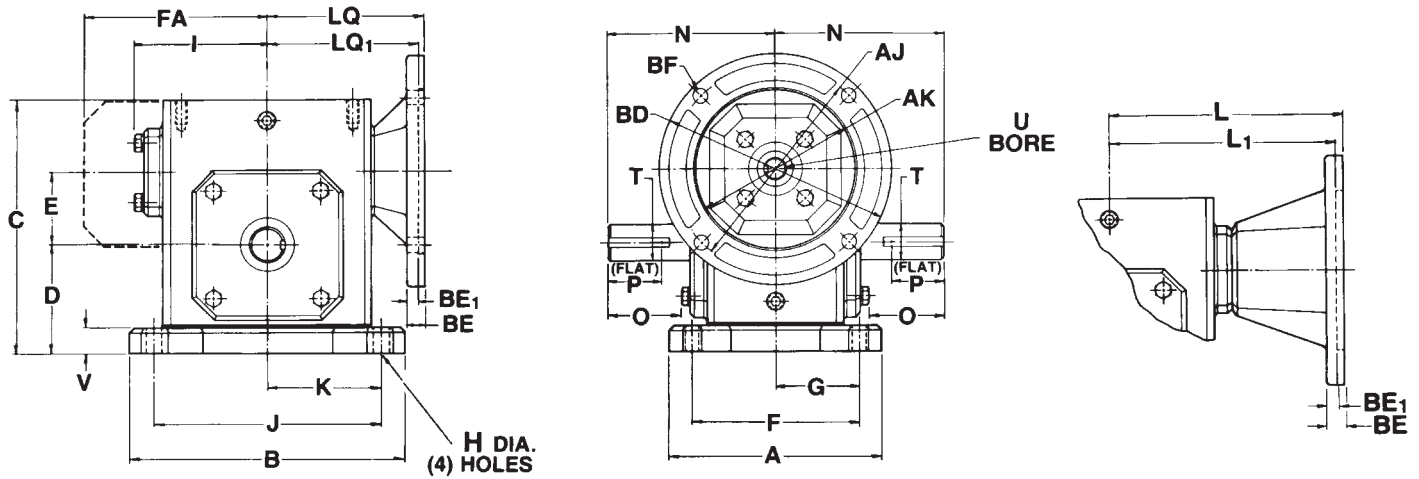
ASSEMBLIES



STYLE "TM/TMQ"

RIGHT-ANGLE GEAR REDUCERS

DIMENSIONS



DIMENSIONS

SIZE	A	B	C	D	E	F	G	H	I	J	K	N	O	P	T	KWY.
10	4.38	5.30	4.125	1.812	1.000	2.88	1.44	.344	2.20	3.75	1.88	2.88	1.14	1.00	.500	1/8 x 1/16
13	5.38	5.38	5.156	2.250	1.333	4.38*	2.19*	.344	2.69	4.38	2.19	3.99	1.88	1.50	.625	3/16 x 3/32
15	5.75	7.00	5.970	2.500	1.540	4.31	2.16	.406	3.21	5.25	2.62	4.31	1.76	1.50	.750	3/16 x 3/32
18	5.75	7.00	6.438	2.750	1.750	4.50	2.25	.406	3.32	5.75	2.88	4.31	1.82	1.38	.875	3/16 x 3/32
21	6.00	7.69	7.094	3.000	2.062	4.68	2.34	.468	3.69	6.38	3.19	4.68	2.06	1.44	1.000	1/4 x 1/8
24	6.19	8.38	7.679	3.250	2.375	4.88	2.44	.469	3.94	7.06	3.53	5.14	2.36	1.75	1.125	1/4 x 1/8
26	6.50	9.25	8.750	3.688	2.625	5.25	2.62	.531	4.54	8.00	4.00	5.63	2.33	2.00	1.250**	1/4 x 1/8
30	7.12	9.68	9.625	4.000	3.000	5.88	2.94	.531	4.97	8.44	4.22	6.75	3.38	2.25	1.250	1/4 x 1/8
32	7.75	11.12	10.250	4.375	3.250	6.12	3.06	.531	5.22	9.50	4.75	7.06	3.26	2.62	1.500	3/8 x 3/16
42	9.75	13.25	12.375	5.437	4.250	7.62	3.81	.656	6.24	11.12	5.56	8.12	3.82	3.06	1.875	1/2 x 1/4
52	10.50	16.25	15.125	6.250	5.250	8.38	4.19	.781	7.61	14.12	7.06	9.06	4.02	3.50	2.000	1/2 x 1/4
600	12.00	19.00	17.750	7.750	6.000	9.50	4.75	.875	8.35	16.50	8.25	10.00	4.66	4.00	2.500	5/8 x 5/16
700	13.40	15.36	20.360	9.000	7.000	11.24	5.62	1.000	—	13.00	6.50	11.76	4.84	4.00	2.750	5/8 x 5/16
800	13.52	17.40	22.840	10.500	8.000	11.52	5.76	1.000	—	14.76	7.38	12.26	5.38	4.50	3.000	3/4 x 3/8

This chart is meant only as a guide. For actual ratings, see LEESON Gear Catalogue. *Both mountings in casting **1.125 also available

SIZE	V	UNIT	V	FA
10	.44	262	.69	—
13	.47	300	.75	6.91
15	.63	325	.81	7.16
18	.63	425	.94	8.21
21	.66	525	1.06	9.58
24	.69	600	1.12	11.50
		700	1.42	11.36
		800	1.64	12.32

ASSEMBLIES



MOTOR DATA

Motor Frame Size	AJ	AK	BD	BE	BE1	BF	U	KWY.
42CZ 48C	3.750	3.00	5.62	.50	—	.312	.500	1/8 x 1/16
56C	5.875	4.50	6.50	50*	—	.406	.625	3/16 x 3/32
143TC 145TC	5.875	4.50	6.50	50*	—	.406	.875	3/16 x 3/32
182TC 184TC	7.250	8.50	9.00	—	.56**	.531	1.125	1/4 x 1/8
213TC 215TC	7.250	8.50	9.00	—	.56**	.531	1.375	5/16 x 5/32
254 256TC	7.250	8.50	9.00	.56	.75	.531	1.625	3/8 x 3/16

* = on sizes 300 and 325 BE = .84** = on sizes 1300 and 1325 BE1 = .97

SIZE	42CZ 48C		56C 143TC/145TC†		182TC 184TC		213TC 215TC		254TC 256TC	
	L	LQ	L	LQ	L1	LQ1	L1	LQ1	L1	LQ1
10	4.96	2.99	5.39	3.46	—	—	—	—	—	—
13	6.29	3.44	6.70	3.40	—	—	—	—	—	—
15	6.90	3.97	6.29	3.92	—	—	—	—	—	—
18	7.02	4.06	7.33	4.02	—	—	—	—	—	—
21	7.27	4.44	7.70	4.40	—	—	—	—	—	—
24	—	—	8.26	4.63	9.18	5.06	9.18	5.06	—	—
26	—	—	8.87	5.21	9.76	5.64	9.76	5.64	—	—
30	—	—	8.62	4.96	9.51	5.39	9.51	5.39	—	—
32	—	—	9.73	5.90	10.79	6.34	10.79	6.78	—	—
42	—	—	11.83	6.77	12.77	7.21	12.77	7.21	12.99	7.86
52	—	—	13.21	8.14	14.25	8.58	14.25	8.58	14.96	9.23
600	—	—	—	8.88	15.53	9.32	15.53	9.32	16.18	9.94
700	—	—	—	—	14.90	—	14.90	—	14.90	—
800	—	—	—	—	—	—	15.88	—	15.88	—

† NOTE: 143TC/145TC not offered on size 1100.