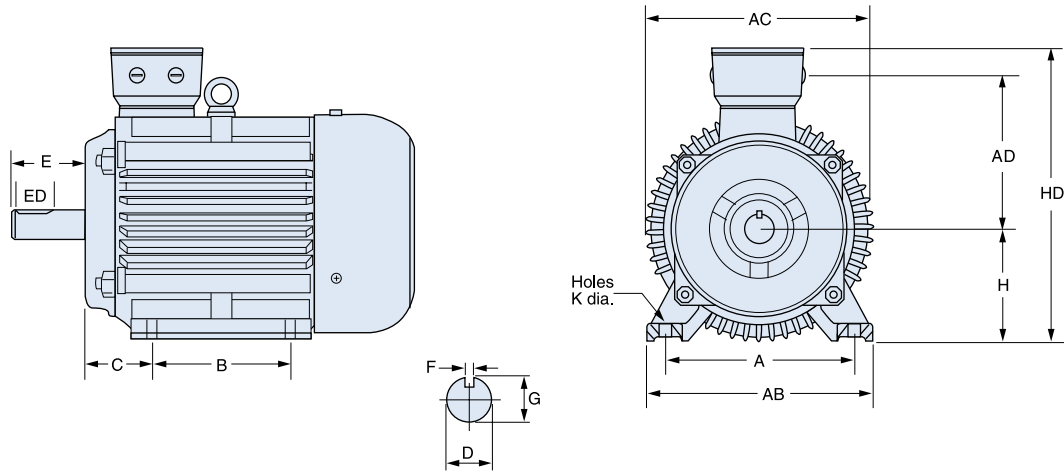


B3 FOOT-MOUNTED



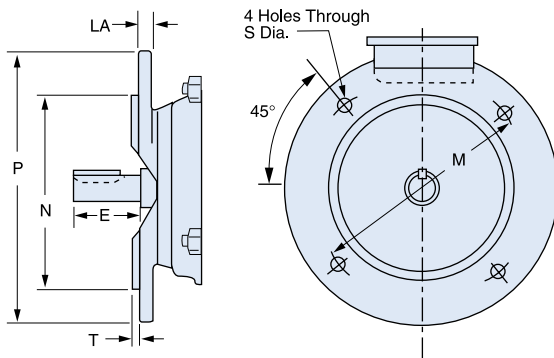
METRIC (IEC) FRAME DIMENSIONS (Millimeters)

Frame	Mounting					Shaft							General			B5 Flange						B14 Face					
	A	B	C	H	AB	K	D	E	F	G	ED	DH	AC	AD	HD	M	N	P	S	T	LA	M	N	P	S	T	LA
D56	90	71	36	56	107	6	9	20	3	7.5	8	M3 x 8	-	-	-	100	80	120	7	2.5	7	65	50	80	M5	2.5	7
D63	100	80	40	63	122	7	11	23	4	8.5	10	M4 x 10	126	84	171	115	95	140	10	3.0	7	75	60	90	M5	2.5	7
D71	112	90	45	71	136	7	14	30	5	11.0	20	M5 x 12.5	141	94	191	130	110	160	10	3.5	7	85	70	105	M6	2.5	9
D80	125	100	50	80	154	10	19	40	6	15.5	25	M6 x 16	159	102	206	165	130	200	12	3.5	12	100	80	120	M6	3.0	9
D90S	140	100	56	90	172	10	24	50	8	20.0	32	M8 x 19	180	112	229	165	130	200	12	3.5	12	115	95	140	M8	3.0	9
D90L	140	125	56	90	172	10	24	50	8	20.0	32	M8 x 19	180	112	229	165	130	200	12	3.5	12	115	95	140	M8	3.0	9
DF100L	160	140	63	100	205	12	28	60	8	24.0	40	M10 x 22	205	130	270	215	180	250	15	4.0	11	130	110	160	M8	3.5	14
DF112M	190	140	70	112	230	12	28	60	8	24.0	40	M10 x 22	240	150	300	215	180	250	15	4.0	12	130	110	160	M8	3.5	11
DF132S	216	140	89	132	270	12	38	80	10	33.0	56	M12 x 28	275	180	345	265	230	300	15	4.0	12	165	130	200	M10	3.5	14
DF132M	216	178	89	132	270	12	38	80	10	33.0	56	M12 x 28	275	180	345	265	230	300	15	4.0	12	165	130	200	M10	3.5	14
DF160M	254	210	108	160	320	15	42	110	12	37.0	80	M16 x 36	330	210	420	300	250	350	19	5.0	13	215	180	250	M12	4.0	13
DF160L	254	254	108	160	320	15	42	110	12	37.0	80	M16 x 36	330	210	420	300	250	350	19	5.0	13	215	180	250	M12	4.0	13
DF180M	279	241	121	180	355	15	48	110	14	42.5	80	M16 x 36	360	236	455	300	250	350	19	5.0	15	-	-	-	-	-	-
DF180L	279	279	121	180	355	15	48	110	14	42.5	80	M16 x 36	360	236	455	300	250	350	19	5.0	15	-	-	-	-	-	-
DF200L	318	305	133	200	395	19	55	110	16	49.0	100	M20 x 42	420	260	505	-	-	-	-	-	-	-	-	-	-	-	-
DF225S	356	286	149	225	435	19	55 ^{1/2}	110 ^{1/2}	16 ^{1/2}	49 ^{1/2}	100 ^{1/2}	M20 x 42	450	275	580	-	-	-	-	-	-	-	-	-	-	-	-
DF225M	356	311	149	225	435	19	55 ^{1/2}	110 ^{1/2}	16 ^{1/2}	49 ^{1/2}	100 ^{1/2}	M20 x 42	450	275	580	-	-	-	-	-	-	-	-	-	-	-	-
DF250M	406	349	168	250		24	60 ^{1/2}	140 ^{1/2}	18 ^{1/2}	53 ^{1/2}	125 ^{1/2}	M20 x 42	508	300	625	-	-	-	-	-	-	-	-	-	-	-	-

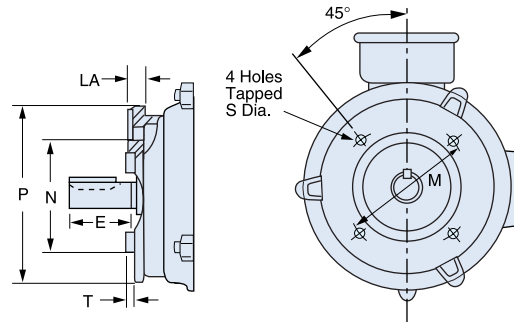
* 2 Pole Dimensions

The overall length dimension for each catalogue item is listed on pages 68-70 of this catalogue.

Frames DF100L through DF132M, conduit box is located in the center of the frame.

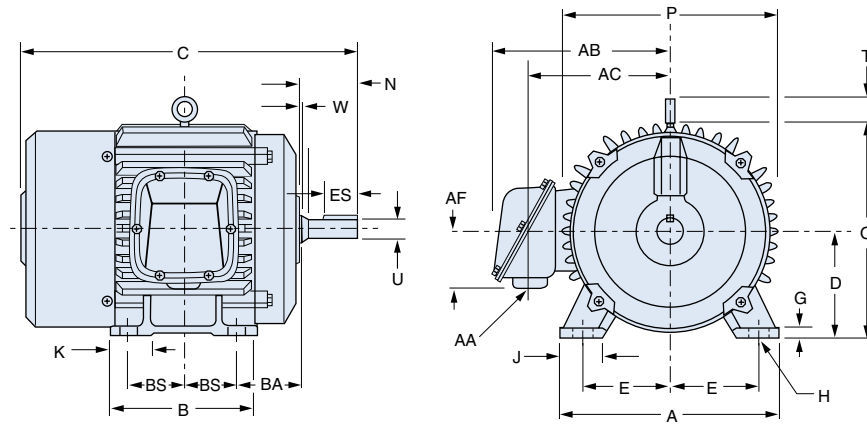


B5 FLANGE



B14 FACE

RIGID MOUNT G-SERIES

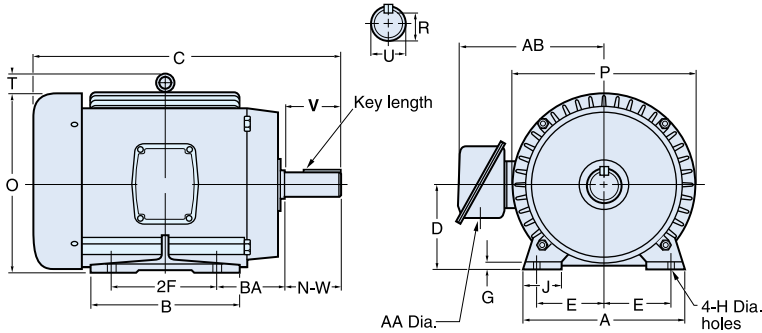


NEMA EXPLOSION-PROOF • G-SERIES • RIGID MOUNT DIMENSIONS (Inches)

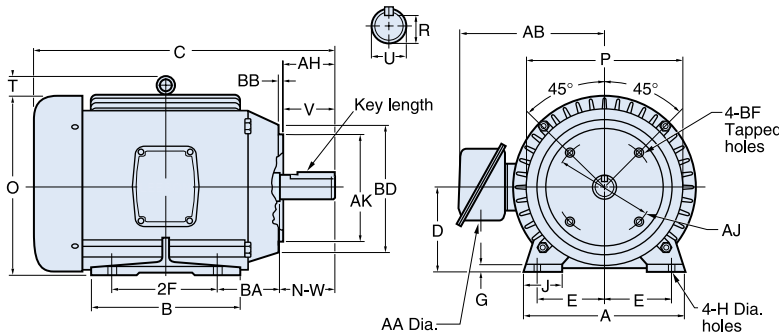
Frame Size	A	B	D	E	2F*	G	H	J	K	N	O	P	T	U	N-W	ES	AA	AB	AC	AF	BA	BS	KEY	C Dim
182T 184T	8.88	7.75	—	3.75	6.75	0.45	0.41-0.46	1.56	—	2.78	9.36	9.76	2.62	1.125	2.75	1.75	0.75	9.73	7.13	—	2.75	3.37	0.25	17.12
213T 215T	10.38	8.50	5.19 5.25	4.25	7.00	0.60	0.44	1.87	—	3.41	10.60	11.50	2.62	1.375	3.38	2.38	0.75	10.94	8.32	2.55	3.50	3.50	0.31	20.18
254T 256T	12.12	10.25	6.19 6.25	5.00	8.25 10.00	0.55	0.53-0.58	2.08	—	4.19	14.07	14.12	—	1.625	4.00	2.88	1.25	13.67	10.65	3.12	4.25	4.12 5.00	0.38	23.52 25.27
284T 284TS 286T 286TS	13.00	11.50 13.00	6.94 7.00	5.50	9.50 11.00	0.88	0.53-0.58	2.50	2.50	4.81 3.44 4.81 3.44	14.74	15.50	3.25	1.875 1.625	4.62	3.25 1.88	1.50	15.33	11.44	5.38	4.75	5.50	0.50 0.38	26.30 24.94 27.80 26.44
324T 324TS 326T 326TS	15.75	13.00 14.50	7.94 8.00	6.25	10.50 12.00	0.86	0.66-0.71	3.50	—	5.50 4.00 5.50 4.00	17.10	16.00	3.25	2.125 1.875	5.25 3.75	3.88 2.00	2.00	16.50	12.64	5.38	5.25	6.00	0.50	28.87 27.37 30.37 28.87
364T 364TS 365T 365TS	17.75	13.25 14.25	8.94 9.00	7.00	11.25 12.25	1.12	0.66-0.71	4.00	3.25	6.12 4.00 6.12 4.00	19.00	20.00	3.62	2.375 1.875	5.88 3.75	4.24	2.50	19.75	14.50	5.38	5.88	5.62 6.12	0.62	31.50 29.38 32.50 30.38
405T 405TS	19.25	16.25	—	8.00	13.75	1.12	0.81-0.86	4.25	3.75	7.50 4.50	20.87	21.75	3.62	2.875 2.125	7.25 4.25	5.62 2.75	2.50	21.50	16.38	5.38	6.62	6.88	0.75 0.50	37.12 34.12
444T 444TS 445T 445TS 449T 449TS	21.50	18.00 19.75 28.25	10.94 11.00	9.00	14.50 16.50 25.00	1.25 1.22 1.25	0.81-0.86	3.75	4.50 5.12 9.88	8.75 5.00 8.75 5.00 8.75 5.00	23.12 24.11 24.19	24.25 26.31 26.31	3.62 2.44 0.77	3.375 2.375 3.375 2.375	8.50 4.75 8.50 4.75	6.88 3.00 6.88 3.00	2.50 3.00 3.00	22.75 27.24 26.09	17.50 20.06 18.88	5.38 6.18	7.50	7.25 8.25 1.78	0.88 0.62 0.88 0.62	41.25 37.50 43.19 39.44 51.69 47.97

* 182-4T and 213-5T frames have eight-hole bases. 449T and TS frames have six-hole bases. Others have four-hole

RIGID MOUNT 150, 160 & 170 SERIES



C FACE 150 & 170 SERIES



NEMA SHAFT AND KEYWAY DIMENSIONS ■ (Inches)

NEMA SHAFT (U)	KEYWAY DIMENSIONS		NEMA SHAFT (U)	KEYWAY DIMENSIONS	
	(R)	(S)		(R)	(S)
3/8	21/64	FLAT	1-7/8	1-19/32	1/2
1/2	29/64	FLAT	2-1/8	1-27/32	1/2
5/8	33/64	3/16	2-3/8	2-1/64	5/8
7/8	49/64	3/16	2-1/2	2-3/16	5/8
1-1/8	63/64	1/4	2-7/8	2-29/64	3/4
1-3/8	1-13/64	5/16	3-3/8	2-7/8	7/8
1-5/8	1-13/32	3/8	3-7/8	3-5/16	1

■ S is keyway width.
U minus R is keyway depth.

NEMA CAST IRON FRAME • 150 & 170 SERIES DIMENSIONS (Inches)

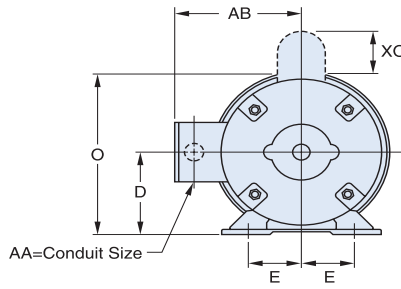
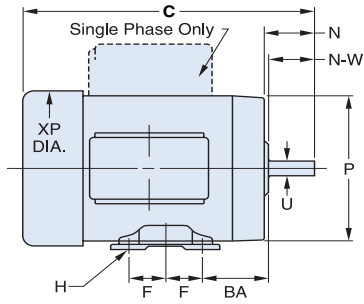
Frame Size ▲	B		D	E	2F	H	N	O	P	U	N-W	AA	AB	AH	AJ	AK	BA	BB	BD	T	T	TAP	KEY														
	TEFC	ODP																		ODP	TS	**															
143T	—	—	3 1/2	2 3/4	4/5	11/32	2 3/8	7 1/8	—	7/8	2 1/4	—	6	2 1/8	5 7/8	4 1/2	2 3/4	1/8	—	—	2 1/4	3/8-16	3/16														
182T	7 1/4	6 7/8	4 1/2	3 3/4	4 1/2	13/32	2 7/8	8 3/4	8 15/32	1 1/8	2 3/4	3/4	6 3/8	2 5/8	7 1/4	8 1/2	*2 3/4	1/4	8 7/8	1 9/16	2 1/2	1/2-13	1/4														
184T	—	—	—	—	5 1/2	—	—	—	—	—	—	—	—	—	—	—	—	—	—	1 3/4	—	—	—														
213T	7 1/2	7 1/2	5 1/4	4 1/4	5 1/2	13/32	—	10 11/16	10 19/16	1 3/8	3 3/8	1	8 5/16	3 1/8	7 1/4	8 1/2	*3 1/2	1/4	9	1 15/16	3 1/8	1/2-13	5/16														
215T	9	9	—	—	7	—	—	—	—	—	—	—	—	—	—	—	—	—	2	—	—	—	—														
254T	10 3/8	10 3/8	6 1/4	5	8 1/2	17/32	—	12 15/16	13 1/4	1 5/8	4	1 1/4	11 5/8	3 3/4	7 1/4	8 1/2	*4 1/4	1/4	9 5/8	2 19/32	3 3/4	1/2-13	3/8														
256T	12 1/8	12 1/8	—	—	10	—	—	—	—	—	—	—	—	—	—	—	—	—	—	2 11/16	—	—	—														
284TS	11 3/4	11 3/4	7	5 1/2	9 1/2	17/32	—	14 1/2	14 3/4	1 5/8	3 1/4	1 1/2	11 3/4	3	9	10 1/2	4 3/4	1/4	11	11	2 19/32	4 3/8	1/2-13	3/8													
284T	—	—			9 1/2					17/32	—			14 1/2							14 3/4	1 5/8		3 1/4	3	4 3/8	3	9	10 1/2	4 3/4	1/4	11	2 19/32	4 3/8	3/8		
286TS	13 1/4	13 1/4			—					—	11			—							—	—		—	—	—	—	—	—	—	—	—	—	—	3	3	1/2
286T	—	—			—					—	—			—							—	—		—	—	—	—	—	—	—	—	—	—	—	—	—	1/2
324TS	12 7/8	13 3/8	8	6 1/4	10 1/2	2 1/32	—	15 3/4	15 3/4	1 7/8	3 3/4	2	13 1/2	3 1/2	11	12 1/2	5 1/4	1/4	13 3/8	2 3/4	5	5/8-11	5														
324T	—	—			—					—	—			—						—	—		—	—	—	—	—	—	—	—	—	—	—	—	—	1/2	
326TS	14 3/8	14 7/8			—					—	12			—						—	—		—	—	—	—	—	—	—	—	—	—	—	—	—	—	
326T	—	—	—	—	—	—	—	—	—	—	—	—	—	—	—	—	—	—	—	—	—	—	—														
364TS	13 3/8	14 7/16	9	7	11 1/4	2 1/32	—	17 13/16	16	1 7/8	3 3/4	3	15 7/16	3 1/2	11	12 1/2	5 7/8	1/4	14	2 1/2	5 5/8	5/8-11	1/2														
364T	—	—			—					—	—			—						—	—		—	—	—	—	—	—	—	—	—	—	—	—	—	5/8	
365TS	14 3/8	15 7/16			—					—	12 1/4			—						—	—		—	—	—	—	—	—	—	—	—	—	—	—	—	—	
365T	—	—			—					—	—			—						—	—		—	—	—	—	—	—	—	—	—	—	—	—	—	—	1/2
404TS	15 15/16	15 15/16	10	8	12 1/4	13/16	—	19 5/16	19 1/8	2 1/8	4 1/4	3	16 5/16	4	11	12 1/2	6 5/8	1/4	15 1/2	2 25/32	7	5/8-11	1/2														
404T	—	—			—					—	—			—						—	—		—	—	—	—	—	—	—	—	—	—	—	—	—	3/4	
405TS	17 7/16	17 7/16			—					—	13 3/4			—						—	—		—	—	—	—	—	—	—	—	—	—	—	—	—	—	
405T	—	—			—					—	—			—						—	—		—	—	—	—	—	—	—	—	—	—	—	—	—	—	1/2
444T	18 11/16	20 5/8	11	9	14 1/2	13/16	—	22 1/4	22	3 3/8	8 1/2	3	21 11/16	7	14	16	7 1/2	1/4	18	3	8 1/4	5/8-11	7/8														
444TS	—	—			—					—	—			—						—	—		—	—	—	—	—	—	—	—	—	—	—	—	—	5/8	
445T	20 5/8	20 5/8			—					—	16 1/2			—						—	—		—	—	—	—	—	—	—	—	—	—	—	—	—	—	
445TS	—	—			—					—	—			—						—	—		—	—	—	—	—	—	—	—	—	—	—	—	—	—	7/8
447T	24 3/16	29 1/8	11	9	20	13/16	—	24 1/4	26 1/2	3 3/8	10 1/8	3	25 15/16	8 1/4	14	16	7 1/2	1/4	18	3 3/16	8 1/4	5/8-11	7/8														
449T	—	—			—					—	—			—						—	—		—	—	—	—	—	—	—	—	—	—	—	—	—	—	

* 213-5TC NEMA C face BA dimension is 4 1/4"

** 326TC and smaller have 4 mounting holes in NEMA C face, 364TC and larger have 8 mounting holes.

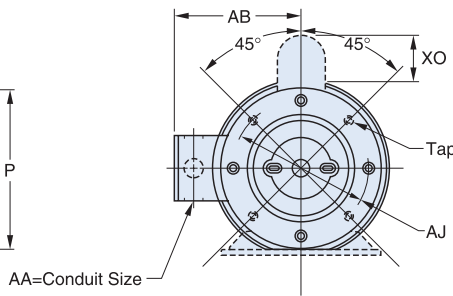
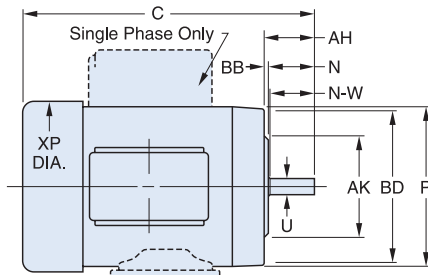
▲ Blue shading denotes dimensions established by NEMA standard MG1, others are unique to LEESON, and will vary with each manufacturer.

RIGID MOUNT



The condensed dimensions shown on these pages are for general reference only and are not for construction. The overall length or "C" dimension for each catalog item is included in this catalog. Certified drawings of all ratings are available for construction purposes.

C FACE



NEMA SHAFT AND KEYWAY DIMENSIONS (Inches)

NEMA SHAFT (U)	KEYWAY DIMENSIONS (R)	(S)	NEMA SHAFT (U)	KEYWAY DIMENSIONS (R)	(S)
3/8	21/64	FLAT	1-7/8	1-19/32	1/2
1/2	29/64	FLAT	2-1/8	1-27/32	1/2
5/8	33/64	3/16	2-3/8	2-1/64	5/8
7/8	49/64	3/16	2-1/2	2-3/16	5/8
1-1/8	63/64	1/4	2-7/8	2-29/64	3/4
1-3/8	1-13/64	5/16	3-3/8	2-7/8	7/8
1-5/8	1-13/32	3/8	3-7/8	3-5/16	1

■ S is keyway width.
U minus R is keyway depth.

NEMA STEEL FRAME DIMENSIONS (Inches)

Frame Size ▲	D	E	F	H	N	O	P	U	N-W	AA	AB	AH	AJ	AK	BA	BB	BD	XO	XP	TAP **	KEY
42	2 ⁵ / ₈	1 ³ / ₄	27/32	9/32 Slot	1 ³ / ₁₆	5 ¹ / ₁₆	4 ⁷ / ₈	3/8	1 ¹ / ₈	3/8	4 ¹ / ₂	1 ⁵ / ₁₆	3 ³ / ₄	3	2 ¹ / ₁₆	1/8	4 ⁷ / ₈	1 ⁵ / ₈	5 ¹ / ₈	1/4-20	3/64 Flat
48	3	2 ¹ / ₈	1 ³ / ₈	1 ¹ / ₃₂ Slot	1 ⁹ / ₁₆	5 ¹³ / ₁₆	5 ¹⁹ / ₃₂	1/2	1 ¹ / ₂	1/2	4 ⁷ / ₈	1 ¹¹ / ₁₆	3 ³ / ₄	3	2 ¹ / ₂	1/8	5	2 ¹ / ₄	5 ⁷ / ₈	1/4-20	3/64 Flat
S56	3 ¹ / ₂	2 ⁷ / ₁₆	1 ¹ / ₂	1 ¹ / ₃₂ Slot	1 ¹⁵ / ₁₆	6 ⁵ / ₁₆	5 ¹⁹ / ₃₂	5/8	1 ⁷ / ₈	1/2	4 ⁷ / ₈	2 ¹ / ₁₆	5 ⁷ / ₈	4 ¹ / ₂	2 ³ / ₄	1/8	6 ¹ / ₂	2 ¹ / ₄	5 ⁷ / ₈	3/8-16	3/16
56						6 ¹³ / ₁₆	6 ¹⁹ / ₃₂				5 ⁵ / ₁₆								7 ⁵ / ₃₂		
143T	3 ¹ / ₂	2 ³ / ₄	2	1 ¹ / ₃₂	2 ³ / ₈	6 ¹³ / ₁₆	6 ¹⁹ / ₃₂	7/8	2 ¹ / ₄	3/4	5 ⁵ / ₁₆	2 ¹ / ₈	5 ⁷ / ₈	4 ¹ / ₂	*2 ¹ / ₄	1/8	6 ¹ / ₂	2 ¹ / ₄	7 ⁵ / ₃₂	3/8-16	3/16
145T			2 ¹ / ₂																		
182T	4 ¹ / ₂	3 ³ / ₄	2 ¹ / ₄	1 ³ / ₃₂	2 ⁷ / ₈	8 ³ / ₄	8 ¹³ / ₃₂	1 ¹ / ₈	2 ³ / ₄	3/4	6 ⁷ / ₁₆	2 ⁵ / ₈	7 ¹ / ₄	8 ¹ / ₂	*2 ³ / ₄	1/4	8 ⁷ / ₈	2 ¹ / ₄	9 ⁷ / ₃₂	1/2-13	1/4
184T			2 ³ / ₄																		
S213T	5 ¹ / ₄	4 ¹ / ₄	2 ³ / ₄	1 ³ / ₃₂	3 ¹ / ₂	9 ²⁷ / ₃₂	8 ¹³ / ₃₂	1 ³ / ₈	3 ³ / ₈	3/4	7 ¹⁹ / ₃₂	3 ¹ / ₈	7 ¹ / ₄	8 ¹ / ₂	*3 ¹ / ₂	1/4	8 ⁷ / ₈	2 ¹ / ₄	9 ⁷ / ₃₂	1/2-13	5/16
213T			2 ³ / ₄		—	10 ⁵ / ₈	9 ²¹ / ₃₂										8 ⁵ / ₈				
215T			3 ¹ / ₂																		

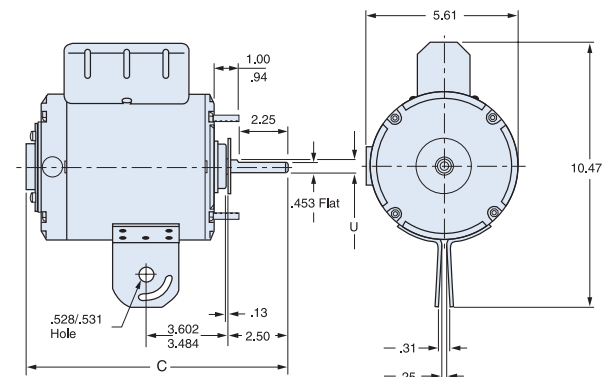
* 143-5TC NEMA C face BA dimension is 2³/₄". 182-4TC NEMA C face BA dimension is 3¹/₂". 213-5TC NEMA C face BA dimension is 4¹/₄".

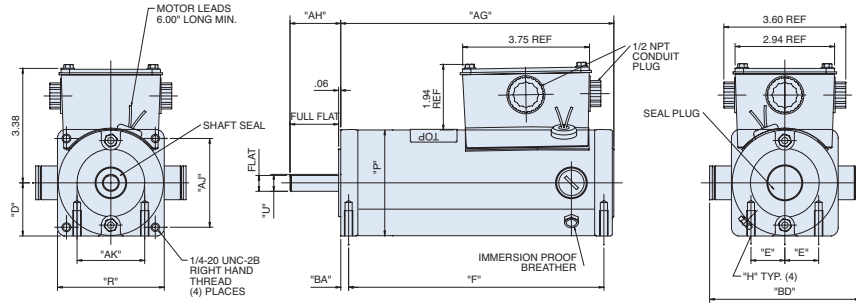
** 326TC and smaller have 4 mounting holes in NEMA C face, 364TC and larger have 8 mounting holes.

▲ Blue shading denotes dimensions established by NEMA standard MG1, others are unique to LEESON, and will vary with each manufacturer.

Pedestal Fan Motors (page 47)

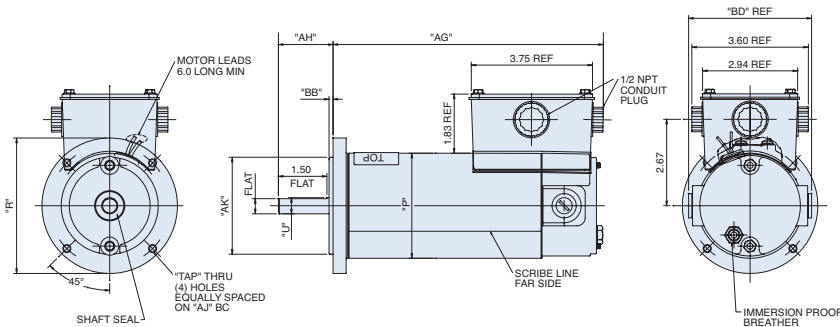
Note: Motors with U = .625 have a 3/16" keyway.





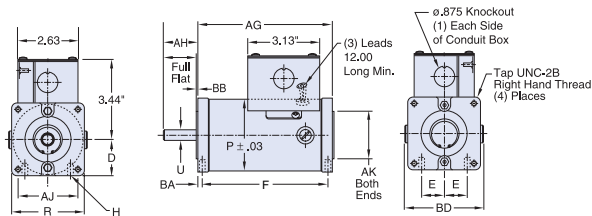
WASHGUARD 31 FRAME SQUARE FLANGE MOUNT STYLE DIMENSIONS (Inches)

Catalog Number	Frame	AG	P	BD	U	AH	AH-BB	AJ	Tap	R	AK	BB	D	BA	E	F	H
M1120181	31S	7.07	3.13	3.80	.50000	1.5	1.44	2.63	1/4-20	3.16	1.99	.07	1.57	.235	1.000	6.55	1/4-20
M1120182	31S	6.57	3.13	4.45	.50000	1.5	1.44	2.63	1/4-20	3.16	1.99	.07	1.57	.235	1.000	6.05	1/4-20
M1120183	31S	8.57	3.13	3.80	.50000	1.5	1.44	2.63	1/4-20	3.16	1.99	.07	1.57	.235	1.000	8.05	1/4-20
M1120184	31S	8.07	3.13	4.45	.50000	1.5	1.44	2.63	1/4-20	3.16	1.99	.07	1.57	.235	1.000	7.55	1/4-20



WASHGUARD 42C FACE MOUNT STYLE DIMENSIONS (Inches)

Catalog Number	Frame	AG	P	U	AH	AH-BB	KEY	AJ	TAP	AK	R	BD
M1120185	32F42CZ	8.36	3.25	.500	1.69	1.50	.13 SQ	3.750	1/4-20	3.00	4.19	3.80
M1120186	32F42CZ	7.86	3.25	.500	1.69	1.50	.13 SQ	3.750	1/4-20	3.00	4.19	4.43

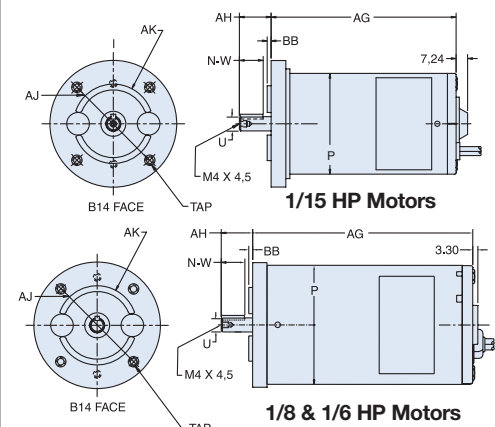


25 & 31 FRAME SQUARE FLANGE MOUNT DIMENSIONS (Inches)

Frame & Type	AG	P	BD	U	AH	AH-BB	AJ	TAP	R	AK	BB	D	BA	E	F	H
25 AS	4.08	2.50	3.00	.312	1.5	1.00	1.73	8-32	2.62	.997	.03	1.28	.125	.625	3.83	8-32
25 CS	4.94	2.50	3.00	.312	1.5	1.00	1.73	8-32	2.62	.997	.03	1.28	.125	.625	4.69	8-32
BS	5.39	3.07	3.45	.5000	1.5	1.00	2.63	1/4-20	3.16	1.99	.07	1.57	.235	1.000	5.42	1/4-20
31 CS**	5.89	3.07	3.45	.5000	1.5	1.00	2.63	1/4-20	3.16	1.99	.07	1.57	.235	1.000	5.42	1/4-20
ES**	6.89	3.07	3.45	.5000	1.5	1.00	2.63	1/4-20	3.16	1.99	.07	1.57	.235	1.000	6.42	1/4-20
GS	7.89	3.07	3.45	.5000	1.5	1.00	2.63	1/4-20	3.16	1.99	.07	1.57	.235	1.000	7.42	1/4-20

**Catalog numbers M1120041 & M1120044 have an 'AG' & 'F' dimension that is .5" longer than stated in table.

COMMERCIAL DUTY METRIC (IEC) FRAME MOTORS



DIMENSIONS (Inches)

Frame Voltage	AG	P	U	AH	N-W	AJ	TAP	AK	BB	
12	4.59	2.50	.35	.787	.591	2.56	M5x.8	1.97	.10	
2.50	24	4.59	2.50	.35	.787	.591	2.56	M5x.8	1.97	.10
90	4.59	2.50	.35	.787	.591	2.56	M5x.8	1.97	.10	
12	5.53	3.00	.35	.787	.591	2.56	M5x.8	1.97	.10	
3.00	24	5.53	3.00	.35	.787	.591	2.56	M5x.8	1.97	.10
90	5.53	3.13	.35	.787	.591	2.56	M5x.8	1.97	.10	
12	5.87	3.00	.35	.787	.591	2.56	M5x.8	1.97	.10	
3.00	24	5.87	3.00	.35	.787	.591	2.56	M5x.8	1.97	.10
90	5.87	3.13	.35	.787	.591	2.56	M5x.8	1.97	.10	

Note: Optional conduit box not included on 25 frame models.

Conduit box dimensions shown here are for 31 frame only.

42C FACE MOUNT DIMENSIONS (Inches)

Frame	AG	P	U	AH	AH-BB	KEY	AJ	TAP	AK	R
34D42C	6.43	3.38	.500	1.38	1.25	.13 SQ	3.750	1/4-20	3.00	4.25

56C FACE MOUNT DIMENSIONS (Inches)

Frame	AG	P*	U	AH	AH-BB	KEY	AJ	TAP	AK	R
34E56C	6.87	3.38	.625	2.06	1.93	.19 SQ	5.875	3/8-16	4.50	6.50
34G56C	8.59	3.38	.625	2.06	1.93	.19 SQ	5.875	3/8-16	4.50	6.50

*For 1/4 HP 34 frame TEFC designs. Fan cover diameter is 3.88".