



AGRICULTURAL MOTORS

GENERAL PURPOSE • SINGLE PHASE

FARM DUTY • GENERAL PURPOSE

Heavy duty single phase Hi-Torque Motors designed specifically for severe "farm duty" applications.

Mechanical Features:

Gasketed capacitor housing and conduit boxes provide protection in all environments. Double shielded ball bearings prelubricated with Exxon POLYREX® EM grease having operating temperature range of -20°F to +350°F and special formulation to provide extra bearing protection. Rubber boot over manual protector reset button provides weather protection.

Electrical Features:

Low temperature manual overload protector protects against extreme overload. Class "F" copper windings and varnish. Capacitor start provides high starting torque with normal starting current.



HIGH TORQUE • RIGID BASE SINGLE PHASE • TEFC

HP	RPM 60 Hz	NEMA Frame	Catalogue Number	List Price	Disc. Sym.	App. Wgt. (lbs.)	Voltage	Over- load Prot.	F.L. Amps 230V	"C" Dim. (in.)
1/3	1725	56	113256	\$316	A	20	115/208-230	Man.	3.2	10.81
1/2	1725	56	110086	355	A	22	115/208-230	Man.	4.4	10.81
3/4	1725	56	110087	366	A	26	115/208-230	Man.	5.4	11.31
1	1725	56	110088	401	A	30	115/208-230	Man.	7.0	11.81
	1725	143T	121569	401	A	30	115/208-230	Man.	7.0	12.75
1 1/2	1725	56H	110089 ☆□	490	A	41	115/208-230	Man.	8.6	13.31
	1725	56HZ/ 145T	113938 ■	516	A	39	115/208-230	Man.	8.6	14.25
2	1725	56HZ/ 145T	110090 ☆■	551	A	43	230	Man.	9.2	14.25
	1740	182T	131541 †	711	A	50	115/208-230	Man.	12.4	13.47
3	1740	184T	131542 †	889	A	83	230	Man.	19.0	15.47
5	1740	184T	131543 †☆	1018	A	96	230	Man.	23.0	16.47
7 1/2	1740	215T	140707 †☆	1186	B	144	230	Man.	32.0	20.21
10	1740	215T	140706 †☆	1265	B	152	230	Man.	40.0	20.71

HIGH TORQUE C FACE SINGLE PHASE • TEFC

NEMA C Face Motor designed with overspeed protection on mechanical centrifugal starting switch.



HP	RPM 60 Hz	NEMA Frame	Catalogue Number	List Price	Disc. Sym.	App. Wgt. (lbs.)	Voltage	Over- load Prot.	F.L. Amps 230V	"C" Dim. (in.)
1/3	1725	56C	113290	\$355	A	27	115/208-230	Man.	3.2	10.81
	1725	56C	M002290 *	266	A	25	115/208-230	Man.	3.2	10.81
1/2	1725	56C	110492	328	A	29	115/208-230	Man.	4.4	10.81
	1725	56C	M009492 *	292	A	26	115/208-230	Man.	4.4	10.81
	1725	56C	M006486 ⊗*	302	A	26	115/208-230	Man.	4.4	10.81
3/4	1725	56C	110493	394	A	33	115/208-230	Man.	5.4	11.31
	1725	56C	M009493 *	329	A	29	115/208-230	Man.	5.4	11.31
1	1725	56C	110494	439	A	36	115/208-230	Man.	7.0	11.81
	1725	56C	M009494 *	343	A	32	115/208-230	Man.	7.0	11.81
	1725	56C	M006488 ⊗*	353	A	32	115/208-230	Man.	7.0	11.81
1 1/2	1725	56C	110495 ☆	545	A	43	115/208-230	Man.	8.6	12.31
	1725	56C	M009495 ☆⊗*420	420	A	47	115/208-230	Man.	9.0	13.31
2	1725	145TC	120855 †☆	661	B	45	230	Man.	9.2	13.31
3	1740	184TC	131603 †	896	B	97	230	Man.	19.0	15.47
5	1740	184TC	131602 †☆	1098	B	112	230	Man.	23.0	16.47

**NEW
PRICING!**

WATSAVER® PREMIUM EFFICIENCY HIGH TORQUE • RIGID BASE SINGLE PHASE • TEFC

WATSAVER® Premium Efficiency Motors provide enhanced operating efficiencies, cooler operating temperatures, and reduced running amperage.

HP	RPM 60 Hz	NEMA Frame	Catalogue Number	List Price	Disc. Sym.	App. Wgt. (lbs.)	Voltage	Over- load Prot.	F.L. Amps 230V	% F.L. Eff.	"C" Dim. (in.)
1/3	1725	56	113765 ☆	\$381	A	28	115/208-230	Man.	1.7	76.0	10.81
1/2	1725	56	113766 ☆	443	A	29	115/208-230	Man.	2.5	78.0	11.31
3/4	1725	56	113767 ☆	468	A	30	115/208-230	Man.	3.2	82.0	11.81
1	1725	56	113768 ☆	486	A	37	115/208-230	Man.	4.2	83.0	12.31
1 1/2	1725	56H	113769 ☆□	547	A	47	115/208-230	Man.	6.5	84.0	13.31
2	1725	56HZ	113770 ☆■	602	A	49	230	Man.	8.2	85.0	14.25

EXTRA HI-TORQUE RIGID BASE SINGLE PHASE • TEFC

Extra Hi-Torque rated 5, 7 1/2 and 10 HP Motors produce up to 400% starting torque with all mechanical and electrical features listed above.

HP	RPM 60 Hz	NEMA Frame	Catalogue Number	List Price	Disc. Sym.	App. Wgt. (lbs.)	Voltage	Over- load Prot.	F.L. Amps 230V	"C" Dim. (in.)
7 1/2	1740	215T	140130 †☆	\$1525	B	167	230	Man.	33.6	20.13
	1740	215TZ	140209 †☆◆	1597	B	167	230	Man.	33.6	20.13
10	1740	215T	140414 †☆	1670	B	202	230	Man.	40.0	20.63

- Combination 56 HZ base has mounting holes for NEMA 56 and 143-5T and a standard NEMA 145T frame shaft of 7/8" diameter.
- Combination 56H base has mounting holes for NEMA 56 and 143-5T and a standard NEMA 56 frame shaft.
- ☆ Capacitor start/capacitor run design for reduced amperage, others are capacitor start/induction run.
- † Class F insulated.
- ‡ Starting relay instead of centrifugal switch.
- ◆ These motors have a NEMA 215T base mounting pattern and shaft height of 5.25", with usable length of 3 3/8" and diameter of 1 1/8" with standard key.

* Industry-Ag motors - for more information see page 45.

⊗ These motors have a NEMA 56 base.

Catalogue numbers in blue are NEW items.



Quality, Performance and Value Without Compromise™

Industry-Ag

**INDUSTRY-AG • 115-208/230V • TEFC
1725 RPM • HIGH TORQUE
RIGID BASE**

Industry-Ag is a new line of heavy duty single phase hi-torque motors built to withstand the rigors of industry and agriculture.

Mechanical Features: Gasketed capacitor housing and conduit boxes provide protection in all environments. Double sealed ball bearings provide extra bearing protection.

Rubber boot over manual protector reset button provides weather protection.

Electrical Features: Manual thermal protector protects against overload. Capacitor start provides high starting torque with normal starting current.



INDUSTRY-AG • 115-208/230V • TEFC

HP	RPM 60 Hz	NEMA Frame	Catalogue Number	List Price	Disc. Sym.	App. Wgt. (lbs.)	Voltage	Over- load Prot.	F.L. Amps 230V	"C" Dim. (in.)
1/3	1725	56	M002256	\$240	A	25	115-208/230	Man.	2.9	10.81
1/2	1725	56	M009086	266	A	26	115-208/230	Man.	3.9	10.81
3/4	1725	56	M009087	303	A	29	115-208/230	Man.	5.0	11.25
1	1725	56	M009088	317	A	32	115-208/230	Man.	6.8	11.25
1 1/2	1725	56	M009089	384	A	47	115-208/230	Man.	9.0	13.31
2	1725	56HZ	M009090*	405	A	50	230	Man.	9.5	14.25
C Flange		56	M064076	26	A	—	—	—	—	—
C Flange		56HZ/140T	M064077	26	A	—	—	—	—	—

* Combination 56HZ base has mounting holes for NEMA 56 and 143-5T and a standard 145T frame shaft of 7/8" diameter.

MILK TRANSFER PUMP MOTOR

General Specifications: Totally enclosed non-ventilated motor. Direct replacement for Surge milk pumps, Babson motor #27732.

Mechanical Features: Special moisture resistant design with double sealed ball bearings. Bearings and bearing cavities packed with high temperature moisture resistant lubricant. Drain holes to expel moisture and water. Epoxy paint.

Electrical Features: Permanent split capacitor design for reliability and improved efficiency. High temperature insulation. Class B insulation system. Requires 30 MFD, 370 VAC capacitor, separately mounted—not supplied.



SINGLE PHASE • RIGID BASE • TENV

HP	RPM 60 Hz	NEMA Frame	Catalogue Number	List Price	Disc. Sym.	App. Wgt. (lbs.)	Voltage	Over- load Prot.	F.L. Amps 230V	"C" Dim. (in.)
1/2	3450	56CZ	113939	\$536	A	24	230	None	4.5	13.11

**FEED-AUGER DRIVE MOTORS
DUST-TIGHT**

Dust-tight, capacitor start motor with your choice of field proven electronic or protected mechanical starting switch—both eliminate damage caused when motor is over-speeded by obstructed auger.

Ball bearing, heavy duty industrial quality designs for high overload capacity. Side mounted conduit box. Flange mounts directly to drive assembly. Fully gasketed to keep out feed dust. Has screw driver slot in rear shaft. Continuous duty, with manual thermal overload protection. **Motors of 3/4 HP and less in the two adjacent charts have shaft of 1/2" diameter x 1 1/2" length, with flat; motors 1 HP and larger have 5/8" diameter x 1.97" length, with key.**



Cat. No. C1293

SINGLE PHASE • TEFC • 60 HERTZ

HP	RPM 60 Hz	NEMA Frame	Catalogue Number	List Price	Disc. Sym.	App. Wgt. (lbs.)	Voltage	Over- load Prot.	F.L. Amps 230V	"C" Dim. (in.)	Footnote
1/3	1725	48NY	H646	\$172	RB1CAC	19	115/230	Man.	5.3/2.7	11.07	▼,*,▲
	1725	48YZ	101159	445	A	20	115/230	Man.	3.5	10.84	
	1725	48Y	101435	390	A	20	115/230	Man.	3.5	10.84	Ⓞ
	1725	56NY	C1291	172	RB1CAC	21	115/208-230	None	5.8/2.8-2.9	12.00	
1/2	1725/1425	56NY	C1292	231	RB1CAC	23	115/208-230	Man.	8.4/4.0-4.2	12.00	☆,◆
	1725	48YZ	101120	463	A	22	115/230	Man.	4.4	10.84	
	1725	48Y	101436	403	A	22	115/230	Man.	4.4	10.84	Ⓞ
3/4	1725	48YZ	101119	496	A	29	115/230	Man.	5.4	11.84	
	1725	56NY	C1293	266	RB1CAC	31	115/208-230	None	8.4/4.5-4.2	13.13	
1	1725	48YZ	101437	436	A	32	115/230	Man.	5.4	11.84	Ⓞ
	1725	56NY	113302	501	A	36	115/230	Man.	7.0	12.61	Ⓞ
1 1/2	1725/1425	56NY	C1294	327	RB1CAC	40	115/208-230	Man.	10.8/6.0-5.4	14.51	▼,◆
	1725	56NY	C1295	466	RB1CAC	44	115/208-230	Man.	14.5/7.1-7.3	14.51	▼
2	1725	56NY	113301	624	A	45	115/230	Man.	6.5	13.62	☆Ⓞ

Ⓞ Mechanical centrifugal starting switch with overspeed protection, others have electronic switch.

☆ Shaft extension 1-13/16" long by 1/2 dia. with 6-3/8 mounting flange

▼ Shaft extension 1-7/8" long by 5/8" dia. with 6-3/8 mounting flange

* Split phase

▲ TENV construction

◆ Designed for 50 or 60 Hz operation



FAN & BLOWER MOTORS

SHAFT MOUNTED

FOR POULTRY AND LIVESTOCK VENTILATION • VARIABLE SPEED (EXCEPT ☒)



These fan and blower duty motors are designed for dependable, *energy saving* performance in applications where the fan is mounted on the shaft of the motor. The permanent split capacitor design does not require a centrifugal switch, resulting in higher reliability than on other types of single phase motors. Because of lower running amperages, this design is more energy efficient and less expensive to operate.



These motors may be operated at listed speed or two speed operation may be achieved by using the proper auxiliary switch. **They are suitable for variable speed by adjusting the voltage to the motor using a variable voltage control, except as noted by ☒.**

Overload protected with an automatic reset protector. Built-in terminal box for quick, easy connection. Grounding provisions.

Totally enclosed, dust-tight design, with precision double sealed ball bearings. Corrosion resistant finish for tough applications.

Because of the inherently low starting torques of this design, these motors are not suitable for belt-driven fan applications. They must be mounted within the air stream of the fan for cooling.

SINGLE PHASE • PSC • VARIABLE TORQUE TEAO • DUST TIGHT • SHAFT MOUNTED

HP	RPM 60 Hz	NEMA Frame	Catalogue Number	List Price	Disc. Sym.	App. Wgt. (lbs.)	Voltage	Over- load Prot.	F.L. Amps 230V	Mounting *	Shaft Length x Width (in.)
1/6	3000	3.4"	M033217	\$157	A	7	115/230	Auto.	1.2	R,E	2
	3000	3.4"	M033219	157	A	7	115/230	Auto.	1.2	E	2
1/4	1725	48Y	101252 ☒	323	A	19	115/230	Auto.	1.6	R,E	2-1/2 x 1/2
	1625	48Y	M099799	231	A	19	115/230	Auto.	1.5	R,E	2-1/2 x 1/2
	1625	48Z	100803	387	A	19	115/230	Auto.	1.6	R-B	2-1/4 x 1/2
	1075	48Z	100824	416	A	22	115/230	Auto.	1.5	R-B	2-1/4 x 1/2
	1075	S56Z	100805	398	A	23	115/230	Auto.	1.5	R-B	2-5/8 x 5/8
	1075	48Y	M099260	230	A	21	115/230	Auto.	1.2	R-E	2-1/2 x 1/2
1/3	1725	48Y	M090253 ☒	239	A	22	115/230	Auto.	1.8	R,E	2-1/2 x 1/2
	1625	48Y	M099800	250	A	22	115/230	Auto.	1.8	R,E	2-1/2 x 1/2
	1635	48Y	M090085	250	A	20	115/230	Auto.	1.8	E	2-1/2 x 1/2
	1625	48Z	100804	392	A	22	115/230	Auto.	1.9	R-B	2-1/4 x 1/2
	1625	S56	100767	341	A	23	115/230	Auto.	1.9	R-B,E	1-7/8 x 5/8
	1625	56Y	111202	423	A	24	115/230	Auto.	1.7	P,B,E	3 x 1/2
	1625	56Y	111348	478	A	24	115/230	Auto.	1.7	B,P,E,R-B,F	3 x 1/2
	1125	S56Z	100604	383	A	23	115/230	Auto.	1.8	R,E	3 x 5/8
	1075	48Z	100825	447	A	24	115/230	Auto.	1.8	R-B,E	2-1/4 x 1/2
	1075	S56Z	100806	429	A	27	115/230	Auto.	1.8	R-B	2-5/8 x 5/8
1075	48Y	M099261	250	A	21	115/230	Auto.	1.5	R,E	2-1/2 x 1/2	
1/2	1725	S56Y	101176 ☒	368	A	26	115/230	Auto.	3.2	R,E	2-1/2 x 5/8
	1625	48Y	M099801	270	A	29	115/230	Auto.	2.5	R,E	2-1/2 x 1/2
	1635	48Y	M090086	250	A	22	115/230	Auto.	2.5	E	2-1/2 x 1/2
	1625	S56	100768	391	A	36	115/230	Auto.	2.5	R-B	1-7/8 x 5/8
	1075	56HZ	111321 □	500	A	36	115/230	Auto.	3.0	R-B,E	2-5/8 x 5/8
	1075	48Y	M099262	265	A	21	115/230	Auto.	2.8	R,E	2-1/2 x 1/2
	1060	48Y	M099946	260	A	26	115/230	Auto.	2.5	R,E	2-1/2 x 1/2
	825	56HZ	111919 □ ☒	516	A	37	115/230	Auto.	3.2	R-B,E	2-5/8 x 5/8
	850	48YZ	M099836 *	295	A	24	115/230	Auto.	3.0	R-B,E	2 x 1/2
	3/4	1625	56Z	111324	475	A	34	115/230	Auto.	3.5	R-B,E
1625		56	111266	473	A	35	115/230	Auto.	3.5	R-B	1-7/8 x 5/8
1060		56HZ	M099847	408	A	36	115/230	Auto.	3.6	R,E	2-5/8 x 5/8
1075		56HZ	111322 □ ☒	545	A	36	115/230	Auto.	4.0	R-B,E	2-5/8 x 5/8
1		1625	56	111267	506	A	41	115/230	Auto.	4.4	R-B,E
850	56C	M009644	366	A	45	230	Auto.	4.6	C	3-1/2 x 3/4	

SPEED CONTROL • 10 AMP

Voltage	Catalogue Number	List Price
120 VAC	MDF-112000	\$88
240 VAC	MDF-132000	88



* MOUNTING LEGEND

- R = Rigid Base
- E = Extended Thru-bolts (10-32 gauge extends 1" beyond the nut)
- R-B = Resilient Base
- C = C Flange
- B = BellyBand
- P = Pedestal (holes tapped - 2)
- F = Four bolt (holes tapped - 4)

☒ Single speed only. Not suitable for variable speed operation.

□ Combination 56H base has mounting holes for NEMA 56 and 143-5T and a standard NEMA 56 frame shaft.

d To be discontinued when present stock is depleted.

VARIABLE SPEED HIGH-PERFORMANCE AG FAN MOTORS

The all new **PERFORMA+** brings fan motor performance to a new level. These high-efficiency motors feature exceptional variable speed performance.

Features:

Water-tight connection end compartment with removable cover, houses the capacitor, thermal protector and wiring—allowing unimpeded airflow over the motor frame.

Locked, double-sealed bearings for all angle mounting, including vertical shaft up.

Oil seal in drive end repels moisture and contaminants.

Class F insulation with Class B rise.

Permanent split capacitor type design eliminates the centrifugal switch for “three phase” type reliability.

Automatic thermal overload protection.



THREE-ARM REPLACEMENT MOTORS

These Performa+ motors are designed for easy and economical replacement of other popular three-arm fan motors. The motors feature adjustable brackets. ARM12FPKIT has three arms and mounting hardware. By simply cutting the arms to length you can cover many different fan and housing sizes.



PEDESTAL FAN MOTORS

LEESON FHP totally enclosed, airover fan motors for air circulators where motor is mounted directly to fan column.

Energy efficient, permanent split capacitor type design eliminates the centrifugal switch for “three phase” reliability. Totally enclosed ball bearing design for commercial and industrial environments. Automatic thermal overload protection, reversible.

Heavy-gauge steel yoke is welded to the motor frame. Four mounting studs are extended 1/2" on 5.14" bolt circle for mounting of fan shroud.



FHP PERFORMA+

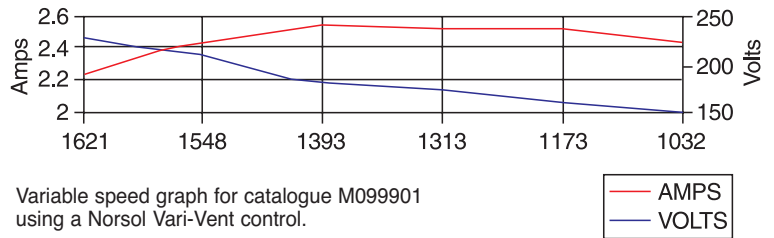
TEAO • RIGID BASE • EXTENDED THRU-BOLTS

HP	RPM 60 Hz	NEMA Frame	Catalogue Number	List Price	Disc. Sym.	App. Wgt. (lbs.)	Voltage	Over- load Prot.	F.L. Amps 230V	Shaft Length (in.)
1/4	1625	48Y	M099899	\$255	A	18	115-208/230	Auto.	1.3	2
	1060	48Y	M099460	274	A	21	115/208-230	Auto.	1.3	2
	1625	48YZ	M099909 [^]	240	A	18	115/208-230	Auto.	1.3	2
1/3	1625	48Y	M099900	265	A	19	115-208/230	Auto.	1.8	2
	1060	48Y	M099461	295	A	22	115/208-230	Auto.	1.9	2
	1625	48YZ	M099910 [^]	251	A	19	115/208-230	Auto.	1.8	2
1/2	1650	48Y	M099901	295	A	22	115-208/230	Auto.	2.6	2
	1060	48Y	M099462	320	A	25	115/208-230	Auto.	2.8	2
	1625	48YZ	M099911 [^]	282	A	22	115/208-230	Auto.	2.6	2

[^] Requires Mounting Bracket ARM12FP

Description	Catalogue Number	List Price	Disc. Sym.	Wgt. (lbs.)
[^] Mounting bracket kit/with hardware	ARM12FPKIT	20	A	2

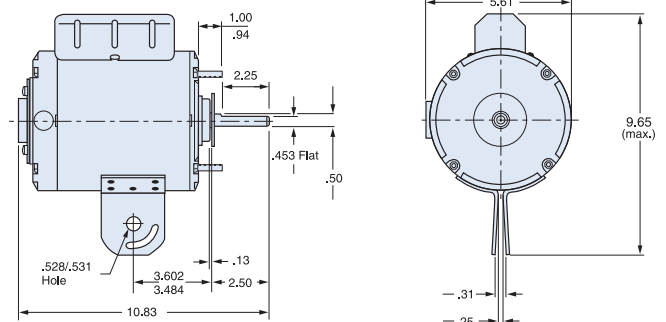
PERFORMA+ Fan Motor Performance @ 0.05 Inches S.P.



PSC • *WITH ON/OFF SWITCH • PULL CHAIN 10 FT. CORD AND PLUG

HP	RPM 60 Hz	NEMA Frame	Catalogue Number	List Price	Disc. Sym.	App. Wgt. (lbs.)	Voltage	Over- load Prot.	F.L. Amps 230V
1/4	1650	48Y	M099731	\$175	A	17	115-208/230	Auto.	1.3
	1650	48Y	M099728 *	205	A	19	115	Auto.	1.3
	1060	48Y	M080891	221	A	21	115/208-230	Auto.	1.2
1/3	1650	48Y	M099732	195	A	20	115-208/230	Auto.	1.7
	1650	48Y	M099729 *	225	A	22	115	Auto.	1.7
	1060	48Y	M080892	240	A	24	115/208-230	Auto.	1.5
1/2	1650	48Y	M099733	225	A	22	115-208/230	Auto.	2.3
	1650	48Y	M099730 *	235	A	23	115	Auto.	2.3
	1060	48Y	M080893	254	A	26	115/208-230	Auto.	2.7

* With switch cord and plug





FAN & BLOWER MOTORS

SINGLE PHASE

PREMIUM EFFICIENCY INDUSTRIAL/RESIDENTIAL BELTED FAN MOTORS

High-efficiency motors for residential or industrial belted fan application.

Features include quiet bearings, resilient cradle base and "Super-Hush" flow-through ventilation.

Rotors are specially balanced for smooth and quiet operation.

Spade connectors on terminal board in standard wiring format along with industry standard mounting allow for quick and easy interchange with other makes.



OPEN DRIP-PROOF • 115V • SINGLE PHASE

HP	RPM 60 Hz	NEMA Frame	Catalogue Number	List Price	Disc. Sym.	App. Wgt. (lbs.)	Voltage	Over- load Prot.	F.L. Amps 115V	% F.L. Eff.	"C" Dim. (Inches)
1/4	1725	48	M090602	\$193	F	15	115	Auto.	2.5	71.0	9.88
1/3	1725	48	M090405	200	F	19	115	Auto.	3.2	75.0	9.88
1/2	1725	48	M090585	217	F	22	115	Auto.	4.6	76.0	10.50

Premium efficiency FHP® brand motors.



Features:

- Drop-in replacement for most standard belted-fan motors
- Extremely quiet running compared to standard fan motors
- Consumes approximately half of the power of a standard fan motor

RESIDENTIAL/INDUSTRIAL BELTED FAN MOTORS SPLIT PHASE

Designed for use in residential and commercial fans and blowers where low starting torque is required. (Air conditioners, roof ventilators and exhaust fans.)



OPEN DRIP-PROOF • RESILIENT BASE • AUTOMATIC OVERLOAD

HP	RPM 60 Hz	NEMA Frame	Bearing Type	Catalogue Number	List Price	Disc. Sym.	App. Wgt. (lbs.)	Voltage	Over- load Prot.	F.L. Amps 115V	"C" Dim. (Inches)
1/4	1725	48YZ	Sleeve	M900195	\$129	A	13	115	Auto.	5.0	9.72
1/3	1725/1140	56	Ball	M900277	262	A	20	115	Auto.	5.3/2.9	10.72
		48YZ	Sleeve	M900196	137	A	15	115	Auto.	6.1	9.72
1/2	1725/1140	56	Ball	M900599	322	A	30	115	Auto.	8.1/4.5	11.85
		48YZ	Sleeve	M900197	180	A	20	115	Auto.	7.2	10.72

Features:

Sleeve or ball bearings.

NEMA Service factors.

Resilient "cradle" style base.

48Y frame has both 48 and 56 frame mounting holes.

HATCHERY AND INCUBATOR FAN MOTORS



Cat. No. 101341



Cat. No. 114102

General Specifications:

Capacitor-type replacement motors for hatchery and incubator fan motors.

Catalogue number 101341 is a permanent split capacitor motor for fan on shaft incubator fans. Band mounted, with 1" long extended through bolts for fan shroud. Shaft diameter 1/2" with 2 1/4", with full length flat. Connections in end of motor through 1/2"-14 NPT tap. UL Listed thermal overload. 15 MFD, 3700 run capacitor shipped loose with motor.

SINGLE PHASE • TEAO

HP	RPM 60 Hz	NEMA Frame	Catalogue Number	List Price	Disc. Sym.	App. Wgt. (lbs.)	Voltage	Over- load Prot.	F.L. Amps 115V	"C" Dim. (Inches)
1/4	1625	48Y	101341	\$166	A	17	115/230	Auto.	1.4	8.93
1/2-	1725/ 0.22 1140	56H	114102	355	A	33	115	Auto.	** 9.3-5.6	11.81

Catalogue number 114102 is a split phase two-speed motor, dust-tight and totally enclosed for belt driven hatchery cooling fans. Resilient base. With UL Listed automatic thermal overload. Requires no capacitor.

Mechanical Features:

Double shielded ball bearings permanently lubricated with Exxon PLOYREX® EM lubricant having a temperature range of -40°F to +320°F and special formulation for extra long life and moisture resistance.

AGRICULTURAL FAN MOTORS BELT DRIVE • TEAO

FHP motors designed for use in agricultural belted fan applications. These motors feature capacitor start/capacitor run configuration for hi-efficiency. They should be mounted in the airstream for proper cooling. They also feature a heavy gauge steel frame with rigid 56/140 combination base.



HIGH-EFFICIENCY • SINGLE PHASE

HP	RPM 60 Hz	NEMA Frame	Catalogue Number	List Price	Disc. Sym.	App. Wgt. (lbs.)	Voltage	Eff.	Over- load Prot.	F.L. Amps 230V
1/2	1725	56	M009580	\$250	A	28	115/208-230	80.6	Auto.	2.2
3/4	1725	56H	M009581	256	A	30	115/208-230	82	Auto.	3.4
1	1725	56H	M009782	285	A	37	115/208-230	85	Auto.	4.3
1½	1725	56H	M009594	314	A	39	115/208-230	78	Auto.	6.8
2	1725	143T	M009595*	405	A	50	230	83	Auto.	9.5

* This model has a side mounted conduit box while the others have a built in box in the NDE.

AERATION FAN MOTORS DIRECT DRIVE • TEAO

Totally enclosed air over motors, dust-tight, suitable for shaft-mounted fans or belt driven fans. Capacitor start designs. Designed to be used within the airflow of the driven fan, these motors offer protection from the environment and are finished in epoxy enamel to resist corrosion in tough atmospheres. Lubricated with high temperature Exxon POLYREX® EM lubricant. Grounding provisions. Fully gasketed. Single phase motors have built-in terminal panel for quick, easy connections.



SINGLE PHASE • CAPACITOR START • TEAO • RIGID BASE

HP	RPM 60 Hz	NEMA Frame	Catalogue Number	List Price	Disc. Sym.	App. Wgt. (lbs.)	Voltage	Over- load Prot.	F.L. Amps 230V	"C" Dim. (Inches)
3/4	3450	56Z	111332 ⑦	\$449	A	27	115/230	None	5.0	10.88
1	3450	56Z	111333 ⑦	458	A	28	115/230	None	6.0	10.88
1½	3450	56Z	111949 ⑦	466	A	40	115/230	None	8.5	11.38
		143TZ	120374 ⑧	481	A	40	115/230	None	8.5	11.88
2	3450	145TZ	120375 ⑧	549	A	41	230	None	10.0	13.38
3	3450	145T	120376 ☆	616	A	47	230	None	13.6	13.88

**These TEAO motors have a 1.0 Service Factor.
Built-in terminal panel for quick easy connections.**

- ⑦ Standard 5/8" diameter shaft with keyway plus 3/4" deep hole drilled and tapped to 10-24 UNC in end of shaft to facilitate mounting of some fan blades.
- ⑧ Standard 7/8" diameter shaft with keyway plus 3/4" deep hole drilled and tapped to 1/4-20 UNC in end of shaft to facilitate mounting of some fan blades.
- ☆ Capacitor start/capacitor run design for reduced amperage, others are capacitor start/induction run.

CROP DRYER MOTORS

Open air over, fan-on-shaft design motors for crop drying applications. Designed for continuous duty operation. Class F insulation system. Thermostats provide thermal overload protection on all units. Extra nameplate included for remote mounting. Keyed shaft with 1/4-20 UNC tapped hole in end.



Capacitors supplied on single phase models. All models include sealed bearings, rodent screens, gray epoxy paint and 3/4" leads exiting the motor at 12 o'clock.

SINGLE PHASE

HP	RPM 60 Hz	NEMA Frame	Catalogue Number	List Price	Disc. Sym.	App. Wgt. (lbs.)	Voltage	Over- load Prot.	F.L. Amps 230V	"C" Dim. (Inches)
5-7	3450	182TZ	131847	\$974	A	76	230	T-Stat	27.2-35.0	16.44
7.5-10	3450	182TZ	131848	1007	A	89	230	T-Stat	31.0-42.0	16.44
10-15	3450	215TZ	140640	1579	A	159	230	T-Stat	39.5-61.5	20.42

THREE PHASE

HP	RPM 60 Hz	NEMA Frame	Catalogue Number	List Price	Disc. Sym.	App. Wgt. (lbs.)	Voltage	Over- load Prot.	F.L. Amps 230V	"C" Dim. (Inches)
5-7.5	3450	184TZ	131849	\$884	A	70	208-230/460	T-Stat	19.0	13.94
7.5-10	3450	184TZ	131850	990	A	83	208-230/460	T-Stat	24.2	15.44
10-15	3450	215TZ	140641	1047	A	115	208-230/460	T-Stat	40.0	17.41