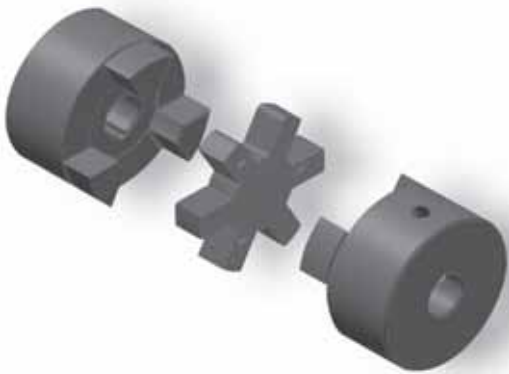


Count on LEESON for your day-to-day couplings.

- High torque capability
- Interchangeable
- Easy installation
- Misalignment allowance
- Four insert materials available



THE JAW COUPLINGS ADVANTAGE

The jaw design is considered "fail-safe." If the insert element wears/breaks away, the coupling continues to operate until the insert can be conveniently replaced. Simple design means easy installation, removal and visual inspection - also greater radial softness, lighter weight and lower cost vs. torque capacity, quiet operation and easy replacement in the field.

FOUR INSERT CHOICES

The choice of the insert element can make a significant difference in the coupling's performance with regard to vibration, temperature, chemicals, misalignment, high rpm, space limitations and installation/removal. Due to the variety of inserts available, careful selection will result in a more efficient and longer-lasting application.

INSERT CHARACTERISTICS

Material	Temperature Range	Chemical Resistance
NBR (Rubber) - Nitrile Butadiene Rubber is an elastomeric element that is oil resistant with the resilience and elasticity of natural rubber. Most economical and widely-used element.	-40° to +212°F -40° to +100°C	Good
Urethane - Urethane has 1.5X more torque capability than NBR, provide less dampening effect and has good resistance to oil and chemicals. Not recommended for cyclic or start-stop applications.	-30° to +160°F -34° to +71°C	Very Good
Hytrel - Hytrel is a pliant elastomer suited to high-torque/temperature operations. Notable resistance to oil and chemicals. Not recommended for cyclic or start/stop applications.	-60° to +250°F -51° to +121°C	Excellent
Bronze - Bronze is a metal insert designed exclusively for slow speed operations that require high torque. (Maximum 250 RPM) Resistant to extreme environments (temperature, water, oil, dirt).	-40° to +450°F -40° to +232°C	Excellent

COUPLINGS		INSERT ELEMENTS																
Coupling Part No.	List Price (\$ (per flange))	NBR (Rubber)					Urethane					Hytrel		Bronze		Hytrel & Bronze		
		Part No.	List Price	Torque In-lbs.	Torque Nm	HP@ 100 RPM	Part No.	List Price	Torque In-lbs.	Torque Nm	HP@ 100 RPM	Part No.	List Price	Part No.	List Price	Torque n-lbs.	Torque Nm	HP @ 100 RPM
L035-1	\$3.25	L035N-1	\$2.10	3.5	0.4	0.006	L035U-1	-	-	-	-	L035H-1	-	L035B-1	-	-	-	-
L050-1	3.25	L050N-1	2.10	26.3	3	0.042	L050U-1	\$8.50	39	4.4	0.062	L050H-1	\$7.10	L050B-1	\$11.90	50	5.6	0.079
L070	5.05	L070N	3.00	43.2	4.9	0.069	L070U	5.90	65	7.3	0.103	L070H	10.00	L070B	14.50	114	12.9	0.181
L075	5.80	L075N	5.10	90	10.2	0.143	L075U	7.30	135	15.3	0.214	L075H	15.00	L075B	23.20	227	25.6	0.36
L090	8.90	L090N	6.60	144	16.3	0.228	L090U	10.50	216	24.4	0.343	L090H	20.00	L090B	25.60	401	45.3	0.636
L095	13.70	L095N	6.60	194	21.9	0.308	L095U	10.50	291	32.9	0.462	L095H	20.00	L095B	25.60	561	63.4	0.89
L099	17.30	L099N	13.90	318	35.9	0.505	L099U	27.60	477	53.9	0.757	L099H	47.60	L099B	37.80	792	89.5	1.257
L100	25.60	L100N	13.90	417	47.1	0.662	L100U	27.60	626	70.7	0.993	L100H	47.60	L100B	37.80	1134	128.1	1.799
L110	35.00	L110N	16.00	792	89.5	1.257	L110U	52.40	1188	134.2	1.885	L110H	57.60	L110B	45.40	2268	256.3	3.599
L150	44.80	L150N	23.00	1240	140.1	1.967	L150U	63.40	1860	210.2	29.51	L150H	69.20	L150B	146.00	3708	419	5.883
L190	70.00	L190N	28.00	1728	195.3	2.742	L190U	68.40	2592	292.9	4.113	L190H	81.60	L190B	222.00	4680	528.8	7.426
L225	85.00	L225N	33.50	2340	264.4	3.713	L225U	86.60	3510	396.6	5.569	L225H	95.80	L225B	284.00	6228	703.7	9.882

Discount Symbol S

STANDARD COUPLING AVAILABILITY*

Bore	Keyway	L035-1	L050-1	L070	L075	L090	L095	L099	L100	L110	L150	L190	L225
1/8	No Kwy	✓											
3/16	No Kwy	✓	✓	✓									
1/4	No Kwy	✓	✓	✓									
5/16	No Kwy	✓	✓	✓									
3/8	No Kwy	✓	✓	✓	✓								
7/16	No Kwy		✓	✓	✓	✓	✓						
1/2	No Kwy		✓	✓	✓	✓	✓						
9/16	1/8 x 1/16		✓	✓	✓	✓	✓						
5/8	3/16 x 3/32		✓	✓	✓	✓	✓				✓		
11/16	3/16 x 3/32			✓	✓	✓	✓				✓		
3/4	3/16 x 3/32			✓	✓	✓	✓				✓		
13/16	3/16 x 3/32				✓	✓	✓	✓	✓	✓	✓		
7/8	3/16 x 3/32				✓	✓	✓	✓	✓	✓	✓		
15/16	1/4 x 1/8					✓	✓	✓	✓	✓	✓		
1	1/4 x 1/8					✓	✓	✓	✓	✓	✓		
1	3/16 x 3/32						✓	✓	✓	✓	✓		
1-1/16	1/4 x 1/8						✓	✓	✓	✓	✓		
1-1/8	1/4 x 1/8						✓	✓	✓	✓	✓	✓	
1-3/16	1/4 x 1/8							✓	✓	✓	✓	✓	
1-1/4	1/4 x 1/8								✓	✓	✓	✓	
1-5/16	5/16 x 5/32								✓	✓	✓	✓	
1-3/8	5/16 x 5/32								✓	✓	✓	✓	✓
1-7/16	3/8 x 3/16									✓	✓	✓	✓
1-1/2	3/8 x 3/16									✓	✓	✓	✓
1-9/16	3/8 x 3/16									✓	✓	✓	✓
1-5/8	3/8 x 3/16									✓	✓	✓	✓
1-11/16	3/8 x 3/16									✓	✓	✓	✓
1-3/4	3/8 x 3/16									✓	✓	✓	✓

* Price and availability for other coupling configurations are readily available - please contact LEESON Canada.

TYPE 1



TYPE 2



DIMENSIONS

Part No.	Type	Outside Diameter A	Hub Diameter HD	Overall Length B	Distances Between Flanges C	Length Thru Bore D	Set Screw			Bore		Wt. Lbs. (approx.)	Approx. WR ² lb-in ²
							Qty.	Size & Length	Tightening Torque in.-lbs.	Min. inches	Max. inches		
L035-1	1	5/8	...	13/16	9/32	17/64	1	#6-32 x 1/8"	7	1/8 (4mm)	3/8 (8mm)	0.1	0.003
L050-1	1	1-1/16	...	1-23/32	15/32	5/8	1	1/4-20 x 3/16"	45	3/16 (5mm)	5/8 (16mm)	0.25	0.054
L070	1	3/1/08	...	2	1/2	3/4	1	1/4-20 x 1/4"	78	3/16 (7mm)	3/4 (19mm)	0.5	0.115
L075	1	3/1/04	...	1/2/08	1/2	13/16	1	1/4-20 x 3/8"	78	3/16 (9mm)	7/8 (22mm)	0.9	0.388
L090	1	1/2/08	...	9/2/64	33/64	13/16	1	1/4-20 x 3/8"	78	3/16 (9mm)	1 (25mm)	1.35	0.772
L095	1	1/2/08	...	2-33/64	33/64	1	2	5/16-18 x 1/4"	80	7/16 (11mm)	1-1/8 (28mm)	1.55	0.89
L099	1	2-17/32	...	2-27/32	23/32	1/1/16	2	5/16-18 x 3/8"	150	7/16 (14mm)	1-3/16 (30mm)	2.25	2.048
L100	1	2-17/32	...	3-15/32	23/32	3/1/08	2	5/16-18 x 3/8"	150	7/16 (12mm)	1-3/8 (35mm)	2.8	2.783
L110	1	5/3/16	...	1/4/04	7/8	11/1/16	2	3/8-16 x 5/16"	225	5/8 (16mm)	1-5/8 (42mm)	5.95	8.993
L150	1	3/3/04	...	1/4/02	1	3/1/04	2	3/8-16 x 1/2"	260	5/8 (16mm)	1-7/8 (48mm)	7.9	11.477
L190	2	1/4/02	4	1/5/04	1	1/2/08	2	1/2-13 x 1/2"	540	3/4 (19mm)	2-1/8 (55mm)	13.8	39.256
L225	2	5	1/4/04	6	1	1/2/02	2	1/2-13 x 1/2"	540	3/4 (30mm)	2-5/8 (65mm)	17.3	65





FIXED BORE SHEAVES

LIGHT DUTY • HEAVY DUTY

VARIABLE PITCH • LIGHT DUTY SINGLE GROOVE



O.D.	Pitch Dia. (in.)						Sheave Part Number	List Price	Overall Width	Available Stock Bores (in.)	App. Shipping Wgt. (lbs.)
	3L		4L		5L						
	Min.	Max.	Min.	Max.	Min.	Max.					
2.50"	1.6	2.4	—	—	—	—	MVL25	\$11.70	1-1/2"	1/2, 5/8	.8
2.87	1.8	2.7	—	—	—	—	MVL30	12.20	1-1/2"	1/2, 5/8	1.0
3.15	1.7	2.5	1.9	2.9	2.4	3.2	MVL34	12.20	1-11/16"	1/2, 5/8, 3/4	1.1
3.75	2.3	3.1	2.4	3.4	2.7	3.7	MVL40	15.00	1-11/16"	1/2, 5/8, 3/4, 7/8	1.3
4.15	2.7	3.5	2.8	3.8	3.1	4.1	MVL44	19.00	1-11/16"	1/2, 5/8, 3/4, 7/8	1.3

DISCOUNT SYMBOL S

VARIABLE PITCH • HEAVY DUTY



Maska Variable Pitch:

V-Belt Sheaves are precision machined from close-grained, annealed castings to provide maximum strength and ensure smooth, quiet operation. Grooves are accurately machined and are smooth finished to provide proper belt seating. Both 1 and 2 Groove adjustable Sheaves permit variations of as much as 30% in speed, when used with Sheave of fixed diameter.



When Ordering:

Specify Sheave Number and required bore diameter.

Accessories

SINGLE GROOVE

TWO GROOVE

Outside Diameter Inches	Pitch Diameter, Inches				Sheave Part Number	List Price	Overall Width Inches	Available Stock Bores (in.)	App. Shipping Wgt. (lbs.)	Sheave Part Number	List Price	Overall Width Inches	Available Stock Bores (in.)	App. Shipping Wgt. (lbs.)
	"A" Belt		"B" Belt											
	Min.	Max.	Min.	Max.										
3.25	2.0	3.0	2.5	3.0	8325	\$33.80	1-7/8	★1/2, 5/8, 3/4, 7/8, 1	1.4	D8325	\$81.00	3.0	5/8, 3/4, 7/8, 1, 1-1/8	3.0
3.75	2.4	3.4	2.7	3.7	8350	41.60	1-7/8	★1/2, 5/8, 3/4, 7/8, 1, 1-1/8	2.0	D8350	93.20	3.0	5/8, 3/4, 7/8, 1, 1-1/8	4.0
4.15	2.8	3.8	3.1	4.1	8400	42.70	1-3/4	★1/2, 5/8, 3/4, 7/8, 1, 1-1/8	2.8	D8400	100.30	3-3/8	5/8, 3/4, 7/8, 1, 1-1/8	5.0
4.75	3.4	4.4	3.7	4.7	8450	43.20	1-3/4	★1/2, 5/8, 3/4, 7/8, 1, 1-1/8	3.0	D8450	105.80	3-3/8	5/8, 3/4, 7/8, 1, 1-1/8	6.0
5.35	4.0	5.0	4.3	5.2	8550	67.80	1-3/4	★1/2, 5/8, 3/4, 7/8, 1, 1-1/8, 1-3/8, 1-5/8	4.0	D8550	123.60	3-3/8	3/4, 7/8, 1, 1-1/8, 1-3/8, 1-5/8	8.0
6.00	4.7	5.8	4.9	5.9	8600	105.40	1-3/4	5/8, 3/4, 7/8, 1, 1-1/8, 1-3/8, 1-5/8	5.0	D8600	167.20	3-3/8	3/4, 7/8, 1, 1-1/8, 1-3/8, 1-5/8	10.0
6.70	5.4	6.5	5.6	6.6	8670	106.80	1-3/4	3/4, 7/8, 1, 1-1/8, 1-3/8, 1-5/8	6.0	D8670	176.80	3-3/8	3/4, 7/8, 1, 1-1/8, 1-3/8, 1-5/8	12.0
7.40	6.1	7.2	6.3	7.3	8740	153.40	1-3/4	3/4, 7/8, 1, 1-1/8, 1-3/8, 1-5/8	7.0	D8740	272.60	3-3/8	3/4, 7/8, 1, 1-1/8, 1-3/8, 1-5/8	14.0

★ 1/2" supplied without keyway.

U.S. Patent no. 450 4249

Can. Patent no. 1160 478

LIGHT DUTY V-BELT SHEAVES • FIXED BORE FOR 4L (A) 5L (B) V-BELTS

FOR 4L ("A") BELTS

Sheave Number	List Price	O.D. Inches	P D in A Belt	T Y P E	Standard Bore (Inches)							Max. Bore	App. Wgt.
					L	1/2	5/8	3/4	7/8	1	1 1/8		
MA15	\$8.00	1.5	1.3	1	1%	x	x					7/8	.5
MA18	8.32	1.8	1.6	1	1%	x	x	x				3/4	.5
MA20	8.32	2.0	1.8	1	1%	x	x	x	x			7/8	1
MA23	9.24	2.3	2.1	1	1%	x	x	x	x			1	1
MA25	9.60	2.5	2.3	2	1 1/4	x	x	x	x	x		1	1
MA28	11.00	2.8	2.6	2	1 1/4	x	x	x	x	x		1	1
MA30	11.88	3.0	2.8	2	1 1/4	x	x	x	x	x	x	1 1/8	1
MA33	12.24	3.3	3.1	2	1 1/4	x	x	x	x	x	x	1 1/8	1
MA38	16.60	3.8	3.6	2	1 1/2	x	x	x	x	x	x	1 1/8	1
MA40	19.16	4.0	3.8	2	1 1/2	x	x	x	x	x	x	1 1/4	2
MA45	20.56	4.5	4.3	2	1 1/2	x	x	x	x	x	x	1 1/4	2
MA50	21.92	5.0	4.8	1	1 3/8	x	x	x	x	x	x	1 1/4	2
MA55	23.96	5.5	5.3	1	1 3/8	x	x	x	x	x	x	1 1/4	2
MA60	25.56	6.0	5.8	1	1 3/8	x	x	x	x	x	x	1 1/4	3
MA70	30.92	7.0	6.8	1	1 3/8	x	x	x	x	x	x	1 1/4	3
MA80	35.48	8.0	7.8	1	1 3/8	x	x	x	x	x	x	1 1/4	3
MA90	41.32	9.0	8.8	1	1 3/8	x	x	x	x	x	x	1 1/4	4
MA100	44.20	10.0	9.8	1	1 3/8	x	x	x	x	x	x	1 1/4	5
MA110	48.28	11.0	10.8	1	1 3/8	x	x	x	x	x	x	1 1/4	7
MA120	56.60	12.0	11.8	1	1 3/8	x	x	x	x	x	x	1 1/4	8

FOR 5L ("B") BELTS

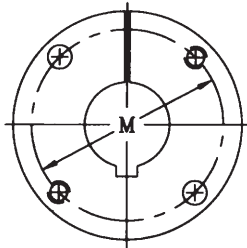
DISCOUNT SYMBOL S

Sheave Number	List Price	O.D. Inches	P D in A Belt	T Y P E	Standard Bore (Inches)							Max. Bore	App. Wgt.
					L	1/2	5/8	3/4	7/8	1	1 1/8		
MB20	\$11.25	2.0	1.7	5	1 1/2	x	x	x				3/4	.5
MB23	11.64	2.3	2.0	5	1 1/2	x	x	x	x			7/8	1
MB25	12.00	2.5	2.2	5	1 1/2	x	x	x	x	x		1	1
MB26	12.68	2.6	2.3	5	1 1/2	x	x	x	x	x		1	1
MB28	13.20	2.8	2.5	6	1 3/8	x	x	x	x	x	x	1 1/8	1
MB30	13.20	3.0	2.7	6	1 3/8	x	x	x	x	x	x	1 1/8	1
MB31	13.56	3.1	2.8	6	1 3/8	x	x	x	x	x	x	1 1/8	1
MB33	14.72	3.3	3.0	6	1 3/8	x	x	x	x	x	x	1 1/8	1
MB35	18.08	3.5	3.2	6	1 3/8	x	x	x	x	x	x	1 1/8	1
MB38	19.72	3.8	3.5	6	1 3/8	x	x	x	x	x	x	1 1/8	2
MB40	20.56	4.0	3.7	6	1 3/8	x	x	x	x	x	x	1 1/8	2
MB45	22.72	4.5	4.2	6	1 3/8	x	x	x	x	x	x	1 1/8	2
MB50	23.12	5.0	4.7	5	1 1/2	x	x	x	x	x	x	1 1/8	3
MB55	25.56	5.5	5.2	5	1 1/2	x	x	x	x	x	x	1 1/8	2
MB60	26.44	6.0	5.7	5	1 1/2	x	x	x	x	x	x	1 1/8	3
MB70	36.36	7.0	6.7	5	1 1/2	x	x	x	x	x	x	1 1/8	3
MB80	40.26	8.0	7.7	5	1 1/2	x	x	x	x	x	x	1 1/8	4
MB90	44.88	9.0	8.7	5	1 1/2	x	x	x	x	x	x	1 1/8	4
MB100	48.60	10.0	9.7	5	1 1/2	x	x	x	x	x	x	1 1/8	5
MB110	55.88	11.0	10.7	5	1 1/2	x	x	x	x	x	x	1 1/8	7
MB120	57.68	12.0	11.7	5	1 1/2	x	x	x	x	x	x	1 1/8	8

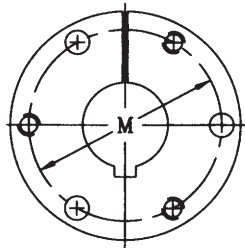
TAPERED QD△ BUSHING DIMENSIONS

Bushing	List Price	Dimensions (Inches)								Bolt Circle M	Cap Screws Required	Stock Bore Range				App. Wgt. (lbs.)
		A	B	D	E	F	G	H	L			Minimum	Maximum			
												Standard Keyway	Standard Keyway	Shallow Keyway	No Keyway	
L	\$9.00	0.350	1.6250	2 1/2	1	7/8	1/8	—	1.350	2	2 = 1/4 x 3/4	1/2	1 1/4	1 1/2	*	.6
JA	10.90	5/16	1.3750	2	11/16	5/8	5/32	-3/32	1	12 1/32	3 = 10 x 1	1/2	1	1 3/16	1 1/4	.8
SH	14.90	3/8	1.8710	2 11/16	7/8	3/4	5/32	-1/32	1 1/4	2 1/4	3 = 1/4 x 1	1/2	1 3/8	1 5/8	1 11/16	.9
SDS	17.30	7/16	2.1875	3 3/16	7/8	3/4	5/32	-1/32	1 5/16	2 11/16	3 = 1/4 x 1 1/4	1/2	1 11/16	1 15/16	2	1.3
SD	20.80	7/16	2.1875	3 3/16	1 3/8	1 1/4	5/32	-1/32	1 13/16	2 11/16	3 = 1/4 x 2	1/2	1 11/16	1 15/16	2	1.6
SK	26.80	1/2	2.8125	3 7/8	1 3/8	1 1/4	7/32	-3/32	1 7/8	3 5/16	3 = 5/16 x 2	1/2	2 1/8	2 1/2	2 9/16 x 2 5/8	2.8
SF	33.00	1/2	3.1250	4 5/8	1 1/2	1 1/4	7/32	1/32	2	3 7/8	3 = 3/8 x 2	1/2	2 1/4	2 15/16	*	3.9

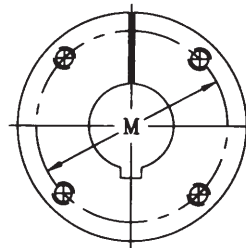
▲“QD” bushings is a registered trademark and manufactured by Maska under license.



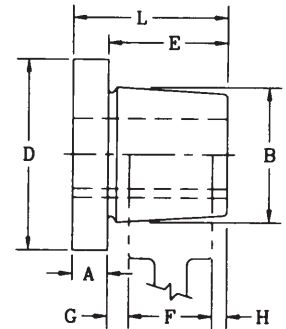
Bushing
“L”



Bushings
“JA” to “J”
Inclusive



Bushings
“M” to “S”
Inclusive



TAPER 3/4" PER FT
ON DIAMETER - B-

Accessories

LIGHT DUTY “FAST MOUNT” BUSHING

Pitch Diameter		SINGLE-GROOVE				App. Wgt. (lbs.)
A (4L) Belt	B (5L) Belt	O.D.	Part Number	List Price Rim Only		
2.4	2.8	3.1	MB31L	\$21.68	1.2	
2.6	3.0	3.3	MB33L	23.06	1.4	
2.8	3.2	3.5	MB35L	23.10	1.6	
3.0	3.4	3.7	MB37L	23.28	1.2	
3.2	3.6	3.9	MB39L	23.34	1.4	
3.5	3.9	4.2	MB42L	23.84	1.8	
3.7	4.1	4.4	MB44L	24.36	2.2	
4.0	4.4	4.7	MB47L	24.92	2.0	
4.2	4.6	4.9	MB49L	25.44	2.1	
4.5	4.9	5.2	MB52L	25.96	2.7	
4.7	5.1	5.4	MB54L	26.46	2.7	
5.0	5.4	5.7	MB57L	26.76	2.5	
5.2	5.6	5.9	MB59L	28.20	2.6	
5.5	5.9	6.2	MB62L	30.08	2.8	
5.7	6.1	6.4	MB64L	30.96	2.9	
6.0	6.4	6.7	MB67L	32.04	2.8	
6.2	6.6	6.9	MB69L	33.52	3.1	
6.5	6.9	7.2	MB72L	34.92	3.3	
6.7	7.1	7.4	MB74L	35.36	3.8	
7.0	7.4	7.7	MB77L	35.96	3.4	
7.5	7.9	8.2	MB82L	39.92	3.8	
8.0	8.4	8.7	MB87L	42.48	4.3	
8.5	8.9	9.2	MB92L	45.68	5.0	
9.0	9.4	9.7	MB97L	47.44	5.2	
9.5	9.9	10.2	MB102L	48.36	5.5	
10.0	10.4	10.7	MB107L	52.16	6.0	
10.5	10.9	11.2	MB112L	53.80	6.4	
11.0	11.4	11.7	MB117L	57.72	6.9	
12.0	12.4	12.7	MB127L	63.16	6.9	
13.0	13.4	13.7	MB137L	71.64	8.5	
15.0	15.4	15.7	MB157L	83.72	9.8	
18.0	18.4	18.7	MB187L	114.52	13.4	

HEAVY DUTY “QD” BUSHING “A” and “B” COMBINATION • DISCOUNT SYMBOLS

Pitch Diameter		SINGLE GROOVE				TWO GROOVE				App. Wgt. (lbs.)		
A Belts	B Belts	O.D.	Sheave Part Number	List Price Rim Only	Bushing	Mnt ing	Sheave Part Number	List Price Rim Only	Bushing		*Mnt ing	
3.0	3.4	3.75	1B34	\$26.00	SH	R	1	2B34	\$38.00	SH	R	2
3.2	3.6	3.95	1B36	27.00	SH	R	1	2B36	40.00	SH	R	3
3.4	3.8	4.15	1B38	28.00	SH	R	2	2B38	42.00	SH	R	3
3.6	4.0	4.35	1B40	29.00	SH	R	2	2B40	44.00	SH	R	3
3.8	4.2	4.55	1B42	30.00	SH	SR	2	2B42	46.00	SH	SR	3
4.0	4.4	4.75	1B44	31.00	SH	SR	2	2B44	48.00	SH	SR	4
4.2	4.6	4.95	1B46	32.00	SDS	SR	3	2B46	50.00	SDS	SR	4
4.4	4.8	5.15	1B48	33.00	SDS	SR	3	2B48	52.00	SDS	SR	4
4.6	5.0	5.35	1B50	34.00	SDS	SR	3	2B50	54.00	SDS	SR	5
4.8	5.2	5.55	1B52	35.00	SDS	SR	3	2B52	56.00	SDS	SR	5
5.0	5.4	5.75	1B54	36.00	SDS	SR	4	2B54	58.00	SDS	SR	6
5.2	5.6	5.95	1B56	37.00	SDS	SR	4	2B56	60.00	SDS	SR	6
5.4	5.8	6.15	1B58	38.00	SDS	SR	4	2B58	62.00	SDS	SR	6
5.6	6.0	6.35	1B60	40.00	SDS	SR	5	2B60	64.00	SDS	SR	7
5.8	6.2	6.55	1B62	42.00	SDS	SR	5	2B62	66.00	SDS	SR	7
6.0	6.4	6.75	1B64	44.00	SDS	SR	6	2B64	68.00	SDS	SR	7
6.2	6.6	6.95	1B66	48.00	SDS	SR	6	2B66	69.00	SDS	SR	8
6.4	6.8	7.15	1B68	50.00	SDS	SR	6	2B68	71.00	SDS	SR	8
6.6	7.0	7.35	1B70	52.00	SDS	SR	6	2B70	72.00	SK	SR	10
7.0	7.4	7.75	1B74	56.00	SDS	SR	6	2B74	73.00	SK	SR	10
7.6	8.0	8.35	1B80	58.00	SDS	SR	7	2B80	74.00	SK	SR	12
8.2	8.6	8.95	1B86	62.00	SDS	SR	8	2B86	76.00	SK	SR	12
8.6	9.0	9.35	*1B90	63.00	SDS	SR	8	*2B90	77.00	SK	SR	12
9.0	9.4	9.75	1B94	64.00	SDS	SR	9	2B94	78.00	SK	SR	13
10.6	11.0	11.35	1B110	76.00	SDS	SR	11	2B110	92.00	SK	SR	16
12.0	12.4	12.75	1B124	90.00	SDS	SR	13	2B124	100.00	SK	SR	19
13.2	13.6	13.95	1B136	96.00	SDS	SR	13	2B136	120.00	SK	SR	25
15.0	15.4	15.75	1B154	116.00	SK	SR	22	2B154	168.00	SK	SR	28
15.6	16.0	16.35	1B160	136.00	SK	SR	22	2B160	178.00	SK	SR	28
18.0	18.4	18.75	1B184	156.00	SK	SR	28	2B184	224.00	SK	SR	40
19.6	20.0	20.35	1B200	230.00	SK	SR	30	2B200	260.00	SF	SR	47
24.6	25.0	25.35	—	—	—	—	—	2B250	396.00	SF	SR	55
29.6	30.0	30.35	—	—	—	—	—	2B300	440.00	SF	SR	75
37.6	38.0	38.35	—	—	—	—	—	2B380	840.00	SF	SR	100

Refer to LEESON Sheave Catalogue for physical dimensions.

Rim + Bushing = List Price

SHEAVE & BELT GAUGE

To determine whether the sheave groove is worn, select the proper groove gauge and insert the correct angle, based on the sheave's diameter, into the groove - for all classical, narrow & A/B combination sheaves.



Molded plastic, color-matched with our V-belt pulleys. Nine gauges for grooves & two for belts.

Catalogue No.	List Price*
006346	\$4.00

Note: You can also use these gauges to determine the corresponding belt that fits with a sheave - find the gauge that fits depending on size (groove must not be worn) and the size indicated on the gage will identify the belt type.

The belt gauges help you determine the proper belt section. Insert the old belt in the "V" to determine the belt cross section.

MAINTENANCE POINTERS:

- Inspect sheaves often for optimal operating efficiency. Worn grooves cause one or more belts to ride lower than the others - known as "differential driving" resulting in premature wearing of belts and reduced performance levels.
- Rounded sheave sidewalls impair belts by wearing their bottom corners. The belt's wedging action is also reduced.
- If more than 1/32" of wear is evident, reduced V-belt life will result

V-BELT TENSIONER

A handy way of checking belt tension on single strand belts up to 1" wide within the listed ranges. Scales are provided for checking the required force and the belt deflection distance.

Comes in a protective plastic tube; instructions included.

Force Range 0-35 lbs (0-15.9 kg)
Tension Range 0-560 lbs (0-255 kg)

MAINTENANCE POINTERS:

- Belts that are too loose slip causing excessive belt and sheave wear. Sagging belts can snap during start-up or during peak loads.
- Belts that are too tight can damage bearings.
- Both situations reduce power transmission performance levels.

Catalogue No.	List Price*
006347	\$14.50



REDUCER BUSHINGS



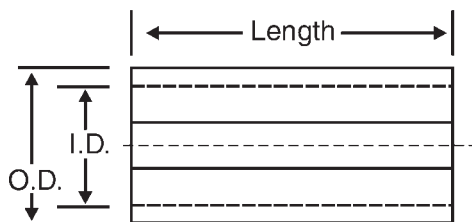
Made of split galvanized steel with a 3/16" keyway slot these reducer bushings instantly adapt larger bores of various tools, sheaves, sprockets or gears to smaller diameters.

Keep these inexpensive items on hand for emergency situations where you need to keep up and running. They can also make your inventory more flexible at a very low cost.

The bushings are sold in poly-bagged quantities of 10.

I.D.	O.D.	Package Qty	Catalogue Number	List Price*	Length (in.)
1/4	5/16	10	SB1-10	\$20	1
1/4	3/8	10	SB2-10	20	1 1/16
5/16	3/8	10	SB3-10	20	1 1/16
3/8	7/16	10	SB4-10	20	1 1/16
3/8	1/2	10	SB5-10	20	1
1/2	5/8	10	SB6-10	20	1 1/4
1/2	5/8	10	SB7-10	20	1 1/2
5/8	3/4	10	SB8-10	20	1 1/4
3/4	1	10	SB9-10	30	1 1/4
7/8	1	10	SB10-10	30	1 5/16
Key		10	K10-10	20	1 1/4

***Discount Symbol S**



Catalogue numbers in blue are NEW items.