

**Taco**<sup>®</sup> HIGH QUALITY REPLACEMENT PARTS  
**PRO-FIT**<sup>®</sup>

Fits Bell & Gossett \* And Armstrong \* Pumps  
\* Both not affiliated with Taco, Inc.



**systems** made **easy**

# Motors



## Application

High quality Pro-Fit® motors are designed to replace all Bell & Gossett\* and Armstrong\*\* motors up to 3 HP. Permanently lubricated, sleeve bearing or ball bearing construction make Pro-Fit® replacement motors maintenance

free. All motors are fitted with rigid, steel mounting cradles with resilient motor mounts to facilitate easy alignment of motor and pump shaft and ensure quiet, vibration-free operation. Note: Some larger HP motors are C-Face mount.

## Features

- Permanently Lubricated, Maintenance Free
- Quiet Operation
- ODP design
- Automatic Thermal Overload thru 3/4 HP and on 1 HP 1Phase
- Finned End Rings for improved cooling
- Class B Insulation
- Corrosion Protection Coating
- Carbon Steel Shaft
- 1725 rpm, 4 pole

## Part # Cross Reference

Pro-Fit® Part#	Bell & Gossett Pump#	B&G Part#	Armstrong Pump#	Armstrong Part#	HP
115/60/1					
MOT-A-100S	100 (75-100)	111034	S-25	805316-010 CCW	1/12
MOT-B-100S	1-1/2", 2", HV, PR	111036 111031	S-35, H-32, H-41	817025-001 CCW	1/6
MOT-B-101S	HV-NEW	111061	N/A	817025-005 CCW	1/6
MOT-C-100S	2-1/2", LD3	111040	S-45	817025-007 CCW	1/4
MOT-C-101S	HD3	111042	S-46	817025-013 CCW	1/3
MOT-D-100S	60-11	169035	H-51	816141-001 CW	1/4
MOT-D-101S	60-2	169038	H-52	816141-002 CW	1/3
115/230/60/1					
MOT-D-102S	60-13, PD-35	111044	H-53, S-55	811757-001 CW	1/2
MOT-D-104S	60-14, PD-37	111047	H-54, S-57	811757-002 CW	3/4
208-230/460/60/3					
MOT-D-103S	60-13, PD-35	111046	H-53, S-55	831011-083 811757-020	1/2
MOT-D-105S	60-14, PD-37	111049	H-54, S-57	831012-083 811757-024	3/4
115/60/1					
MOT-EFG-200	60 Series	169232 111050	H-65 H-67	811757-002 811757-007	1
208-460/60/3					
MOT-EFG-201	60 Series	169233 169090	H-65 H-67	816676-069 811757-028	1
115/60/1					
MOT-EFG-202	60 Series	169236 169095	H-68	816678-062	1-1/2
208-230/460/60/3					
MOT-EFG-203	60 Series	169092 169237	H-68	816678-069	1-1/2
MOT-FG-204	60 Series	169094 169238	2D	816681-069	2
MOT-FG-205	60 Series	169234			3

## Specifications

Pro-Fit® Part#	HP	Voltage	Rotation
MOT-A-100S	1/12	115/60/1	CCW
MOT-B-100S	1/6	115/60/1	CCW
MOT-B-101S	1/6	115/60/1	CCW
MOT-C-100S	1/4	115/60/1	CCW
MOT-C-101S	1/3	115/60/1	CCW
MOT-D-100S	1/4	115/60/1	CW
MOT-D-101S	1/3	115/60/1	CW
MOT-D-102S	1/2	115/230/60/1	CW
MOT-D-103S	1/2	208/230/460/60/3	---
MOT-D-104S	3/4	115/230/60/1	CW
MOT-D-105S	3/4	208/230/460/60/3	---
MOT-EFG-200	1	115/230/60/1	CW
MOT-EFG-201	1	208/460/60/3	---
MOT-EFG-202	1-1/2	115/230/60/1	CW
MOT-EFG-203	1-1/2	208-230/460/60/3	---
MOT-FG-204	2	208-230/460/60/3	---
MOT-FG-205	3	208-230/460/60/3	---

# Bearing Assemblies & Bearing Cartridge Kit



## Application

Heavy-duty Pro-Fit® bearing assemblies and bearing cartridge kits are designed to replace all Bell & Gossett\* and Armstrong\*\* seal/bearing assemblies. Rugged, die cast aluminum or cast iron construction ensures proper alignment with motor shaft for longer bearing life.

Universal bearing assemblies (A thru D) are bronze fitted with S/S faceplates and S/S shafts for use on open or closed system applications, reducing multiple SKU's. Larger bearing assemblies (E thru G) are designed for bronze fitted or all bronze construction.

## General Features

- Extremely Quiet Running Designs
- Replaceable Cartridge Assembly
- Rugged, Precision Machined, Die Cast Aluminum or Cast Iron Bracket
- Corrosion Protection Coating
- Stainless Steel Shaft
- Brass Impeller Nut

## (A thru D) Features

- 305 Stainless Steel Faceplate (A thru E)
- Dimpled Shaft for Positive Coupler Alignment
- Durable Nitrile Lip-Seal
- Heavy Bronze Sleeve Bearings
- One Bearing Cartridge & Seal for Each Style Bearing

## (E thru G) Features

- Permanently Lubricated, Maintenance-Free Bearings
- Rugged Ball Bearing Design

M.O.C.	Pro-Fit® Part#	Bell & Gossett Pump#	Bell & Gossett Part#	Armstrong Pump#	Armstrong Part#
AL	BRG-A-100	100 (75-150)	118844 189034	S-25	816019-002
AL	BRG-A-200 w/Impeller	100 (75-150)	189134	S-25	810019-001
AL	BRG-B-100	HV & 2" (Old)	189100 189101 189102 189103 189162 189163	S-35, H-32	816549-091
AL	BRG-B-101	HV & 2" (New)	189120 189121 189122 189129 189131 189165	N/A	816023-001
AL	BRG-C-100	2-1/2", LD3, HD3, PR	189105 189106 118447	S-45, S-46, H-41	816027-002
AL	BRG-D-100	PD-35, PD-37, 60-11, 60-2, 60-13, 60-14	186863 186864	S-55, S-57, H-51, H-52, H-53, H-54	816032-000
CI	BRG-F-200	A Size 60 Series	185260 185333		816133-000
CI/BZ	BRG-F-200B	A Size 60 Series	185262 185334		816134-000
CI	BRG-E-200		185332 w/Adapter ring		---
CI	BRG-G-200		---	H60 Series	816861-011
CI/BZ	BRG-G-200B		---	Bronze H60 Series	816861-041

## Replacement Bearing Cartridge Kit

Pro-Fit® Part #	Bell & Gossett Pump#	Bell & Gossett Part #	Armstrong Pump #	Armstrong Part#
CAR-ABCD-100	N/A	N/A	All Models	816999-041
CAR-E-200	N/A	N/A	N/A	N/A
CAR-F-200	N/A	N/A	N/A	N/A
CAR-G-200	N/A	N/A	N/A	N/A

# Impellers



## Application

Durable, Noryl® Pro-Fit® impellers replace all Bell & Gossett\* and Armstrong\*\* pumps through 3/4HP models. Designed to match original

performance curves and reduce wholesaler parts inventories over 50%. One impeller can be used for closed or open systems, cast iron or bronze pumps.

## Features

- Durable, composite Noryl® construction
- Replaces all steel, brass, & plastic impellers
- Integrally molded, brass key insert for added strength
- Designed for open or closed system applications
- Matches Bell & Gossett\* and Armstrong\*\* original performance curves

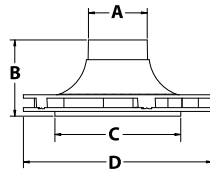
## Part # Cross Reference

Pro-Fit® Part#	Bell & Gossett Pump#	B&G Part#	Armstrong Pump#	Armstrong Part#	Type
IMP-A-100 2.75" Diam.	100 (75-150)	118840 ST	S-25	812961-011	ST
		118431 BR		812961-041	BR
		189132 NF		812961-111	NFI
IMP-B-100 3.38" Diam.	—	—	S-35	816322-011	ST
		—		816322-041	BR
		—		816322-111	NFI
IMP-C-100 4.25" Diam.	2", HV HV-NEW	118668 ST	H-32	816556-011	ST
		118436 BR		816556-041	BR
		189128 NF		816556-111	NFI
IMP-C-101 3.88" Diam.	PR	118830 ST	H-41	816301-025	ST
		118612 BR		816301-055	BR
		—		816301-325	NFI
IMP-C-102 4.25" Diam.	LD3	118676 ST	S-45	816305-028	ST
		118440 BR		816305-058	BR
IMP-C-102 4.25" Diam.	HD3	118675 ST	S-46	816305-025	ST
		118439 BR		816305-055	BR
		—		816305-325	NFI
IMP-D-100 4.75" Diam.	PD-35	118630 ST	S-55	816304-021	ST
		118627 BR		816304-051	BR
IMP-D-101 5.25" Diam.	PD-37, 60-14	118629 ST	S-57, H-54	816304-017	ST
		118626 BR		816304-047	BR
		—		816304-317	NFI
IMP-D-102 5.00" Diam.	60-11	186441 ST	H-51	816302-019	ST
		186359 BR		816302-049	BR
		186360 NF		816302-319	NFI
IMP-D-103 5.25" Diam.	60-2	186441 ST	H-52	816302-017	ST
		186359 BR		816302-047	BR
		—		816302-317	NFI
IMP-D-104 5.25" Diam.	60-13	P61010 ST	H-53	816303-017	ST
		186368 BR		816303-047	BR
—	—	—	—	816303-317	NFI

Type: ST = Steel, BR = Brass, NF/NFI = Plastic, ProFit = Noryl

## Dimensions

Pro-Fit® Part#	A	B	C	D
IMP-A-100	1-1/2	1-3/4	1-1/4	2-3/4
IMP-B-100	1-1/2	1-3/4	1-1/4	3-1/2
IMP-C-100	1-1/2	2	3-1/2	4-1/4
IMP-C-101	2	2	3-1/2	3-3/4
IMP-C-102	2	2	3-1/2	4-1/4
IMP-D-100	2	2	3-1/2	4-3/4
IMP-D-101	2	2	3-1/2	5-1/4
IMP-D-102	1-1/2	2	3-1/2	5
IMP-D-103	1-1/2	2	3-1/2	5-1/4
IMP-D-104	1-1/2	2	3-1/2	5-1/4



# Couplers



## Application

Pro-Fit® heavy-duty spring couplers with reinforced eyelets fit multiple pumps with 1/2" motor shafts. Reinforced eyelets are designed for improved performance and enhanced life. The

flexible coupler kit allows for reduced inventory in addition to help absorb shock, vibration and misalignment that could be transmitted to the system.

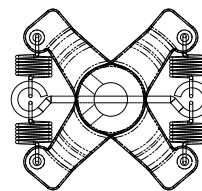
## Features

- Rugged, cast zinc with steel reinforced eyelets to increase life of the coupler
- Heavy-duty spring
- Flexible couplers are kits that allow several configurations

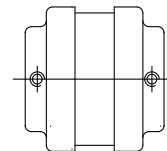
## Part # Cross Reference

Pro-Fit® Part #	Bell & Gossett Pump#	Bell & Gossett Part#	Armstrong Pump#	Armstrong Part#
COU-ABC-100 1/2 X 1/2 Spring Coupler	100 (75-150) 1-1/2", 2" HV, PR	118705	S-25, S-35, H-32, H-41	806026-001
		189110		806168-001
		118712		810120-003
COU-D-100 1/2 X 5/8 1/2 X 1/2 Flex Coupler	2-1/2", LD3, HD3	118723	S-45, S-46	806168-001
		118473	H-51	810120-003
		186410	H-52	807436-000
		118709	S-57, H-54	806137-000
COU-FG-201 5/8 X 7/8 5/8 X 5/8 60 Series	PD-37, 60-14 PD-35, 60-13	186329	S-55, H-53	810120-006
		186330	—	—
		185331	—	—
COU-EFG-200 5/8 X 5/8 5/8 X 1/2 60 Series	60-10 60-20 60-21	186003	S-69, H-62, H-64 H-65, H-66, H-67 H-68, 1060 1-1/2D, 2D, 3D	816665-000
		—	—	—
		—	—	—
		—	—	—
COU-EFG-202 5/8 X 1/2 5/8 X 5/8 60 Series	60-7 60-9 60-17 60-19	186004	H-63 to H-68	812734-000
		—	—	—
		—	—	—
		—	—	—

## COU-ABC-100



## COU-D-100, COU-FG-201, COU-EFG-200, COU-EFG-202



## Seal Kit



### Application

Only one universal seal kit to fit each version of pump shaft. Ceramic and carbon surfaces designed for extended wear and long life.

### Features

- Ceramic and Carbon facing surfaces
- 18-8 Stainless Steel Spring, holder & retainer
- Buna N Cup & Bellows

### Part # Cross Reference

Pro-Fit® Part#	Bell & Gossett Pump#	Bell & Gossett Part#	Armstrong Pump#	Armstrong Part#
SLK-ABCDE-100	All 1/2" Seal Pumps	118681	All 1/2" Seal Pumps	816706-001 816706-021
SLK-F-200	3/4" Seal for 60 Series Pumps	186499	---	810120-009 <i>B&amp;G pumps only</i>
SLK-G-200	---	---	3/4" Seal Pumps	816707-001

## Resilient Motor Mounts



### Application

Direct replacements for all Bell & Gossett\* motors 1/12 to 3/4HP.

### Part # Cross Reference

Pro-Fit® Part#	Bell & Gossett Pump#	Bell & Gossett Part#	Armstrong Pump#	Armstrong Part#
MNT-AB-100	1/12, 1/6 HP	118223	---	810120-000
MNT-CD-100	1/4 -3/4, OLD 1/6 HP	118227, 118228	---	810120-001

## Body Gaskets



### Application

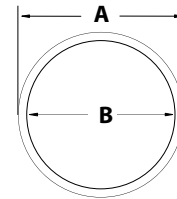
Six body gaskets replace all models up to 3 HP.

### Part # Cross Reference

Pro-Fit® Part#	Bell & Gossett Pump#	B&G Part#	Armstrong Pump#	Armstrong Part#
GSK-A-100	100(75-100)	P04080	S-25	104442-000
GSK-B-100	1-1/2", 2", HV HV-NEW	P04890	S-35, H-32	106049-000
GSK-C-100	2-1/2", LD3, HD3, PR	P05800	S-45, S-46, H-41	106050-000
GSK-D100	PD-35, PD-37, 60-11, 60-2, 60-13, 60-14	P57410	S-55, S-57, H-51 H-52, H-53, H-54	106158-000
GSK-E-200	---	P58542	---	---
GSK-FG-200	A Size 60 Series	P57700	---	106592-000

### Dimensions

Pro-Fit® Part#	A	B
GSK-A-100	3	2-3/4
GSK-B-100	3-3/4	3-1/2
GSK-C-100	4-3/4	4-1/4
GSK-D100	5-1/2	5-1/4
GSK-E-200	7-3/32	6-43/64
GSK-FG-200	7-27/32	7-5/64



## Oil Tube



### Application

Pro-Fit® pump and motor lubricant is lightweight, detergent-free suitable for all pump models requiring oil.

### Part # Cross Reference

Pro-Fit® Part#	Bell & Gossett Pump#	Bell & Gossett Part#	Armstrong Pump#	Armstrong Part#
OIL-ABCD-100	All Models	L23401	All Models	116621-00

**Taco**<sup>®</sup>  
systems made easy

www.taco-hvac.com

# Now better is bigger.



Now you can replace even more worn parts with Taco quality. We've expanded our line of Taco Pro-Fit® replacement parts to fit Bell & Gossett\* and Armstrong\*\* pumps up to 3 HP.

Pro-Fit® replacement parts. Now the better line is a whole lot bigger.



**Taco**® HIGH QUALITY REPLACEMENT PARTS  
**PRO-FIT**®

Fits Bell & Gossett\* And Armstrong\* Pumps  
\*Both not affiliated with Taco, Inc.

\* A trademark of ITT Industries, Inc. \*\* Atrademark of S.A.Armstrong Limited.  
Taco Inc., 1160 Cranston Street, Cranston, RI 02920 [www.taco-hvac.com](http://www.taco-hvac.com)



# Taco quality through & through



Hydronic professionals everywhere trust Taco for the highest quality systems, components, technology, and support. Visit [taco-hvac.com](http://taco-hvac.com) for more information on Pro-Fit® Replacement Parts, additional products, systems, software & training.



[www.taco-hvac.com](http://www.taco-hvac.com)